



#14395

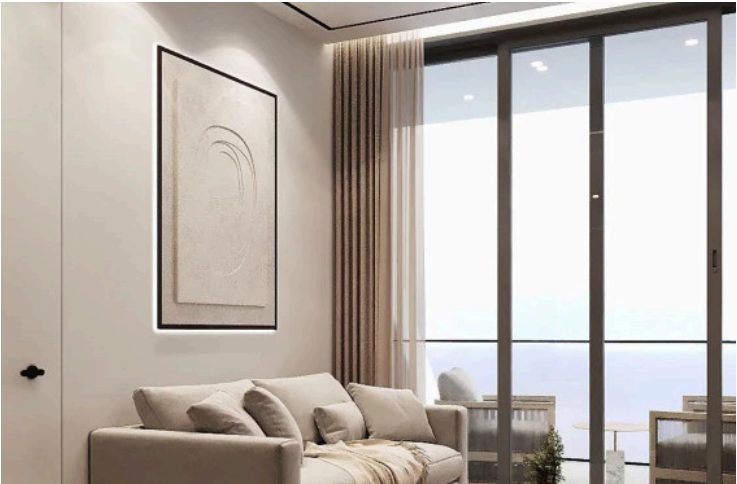
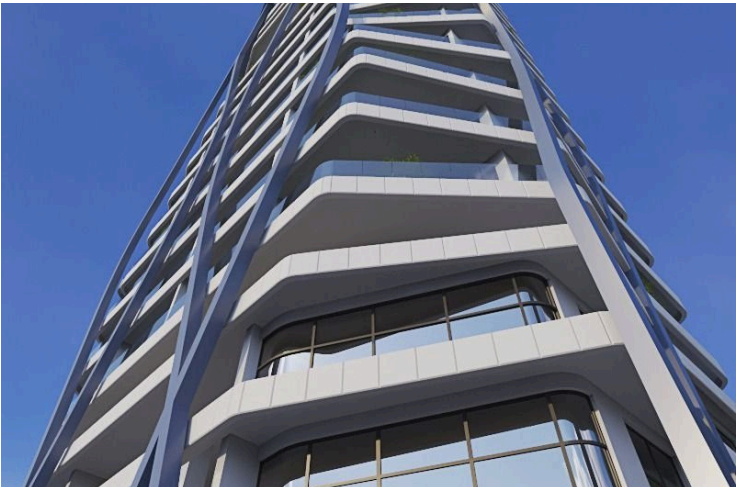
# 2 BEDROOM APARTMENT IN GERMASOGEIA, LIMASSOL (14395)

📍 Germasogeia Tourist Area, Limassol

€2,154,000 +VAT











# Overview

## Specifications

Bedrooms		Bathrooms		Covered	
 2		 2		 120.5 m <sup>2</sup>	
Type		Apartment			
Toilets		2			
Covered veranda		17.7 m <sup>2</sup>			
Garden		7.4 m <sup>2</sup>			
Status		Under construction			
Year of construction		2027			
Furnished		Unfurnished			
Structure		Concrete			
Facade		Concrete			
Energy efficiency rating		 A+			

## Description

Covered Internal Area: 120.5 m<sup>2</sup>  
Covered Veranda: 17.7 m<sup>2</sup>  
Delivery Date: March 2027

### Property Features

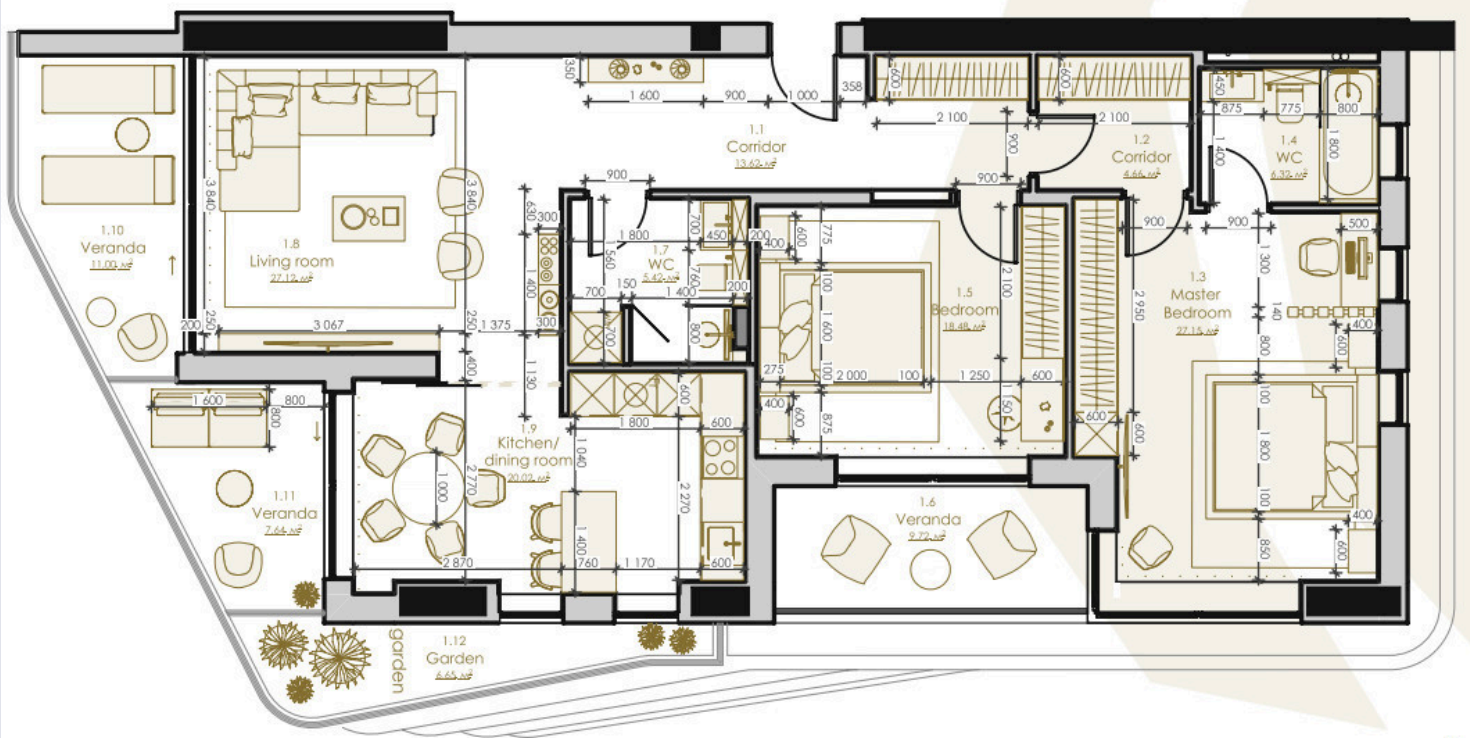
- 2 spacious bedrooms and 2 stylish bathrooms
- Open-plan living and dining area with floor-to-ceiling windows
- Large covered veranda offering beautiful outdoor space with sea views
- Underfloor heating for year-round comfort
- High energy efficiency (Class A+)
- Offered unfurnished — a blank canvas to personalize your home

### Complex Amenities

Secure, modern seventeen-story residential building



# Floor plans





# Additional information

## Facilities

Aircondition, Provision

Indoor pool, Communal

Solar water heater

Gym

Parking, Covered

Spa

Heating, Underfloor

Pool, Communal

## Features

24-hour security

Bright

Connected to electric mains

Easy access to main roads

Energy efficient doors/windows

Handicap accessible

Lobby

Near amenities

Quiet area

Sound insulation

Veranda

Balcony

CCTV

Double glazing

Electric car charger (provision)

Garden

High ceilings

Luxury specifications

Near bus route

Rental potential

Spacious rooms

Walking distance to beach

Bath

CCTV (provision)

Easy access to highway

En suite bathroom

Guest WC

Investment opportunity

Modern design

Parquet flooring

Sea view

Thermal insulation

## Distances

Amenities

 150 m

Airport

 50 km

Sea

 200 m

Public transport

 70 m

Schools

 700 m


Resort

 500 m

## Contact us



**George Sergiou**

 (+357) 94055813

 [info@lextrusrealestate.com](mailto:info@lextrusrealestate.com)

