



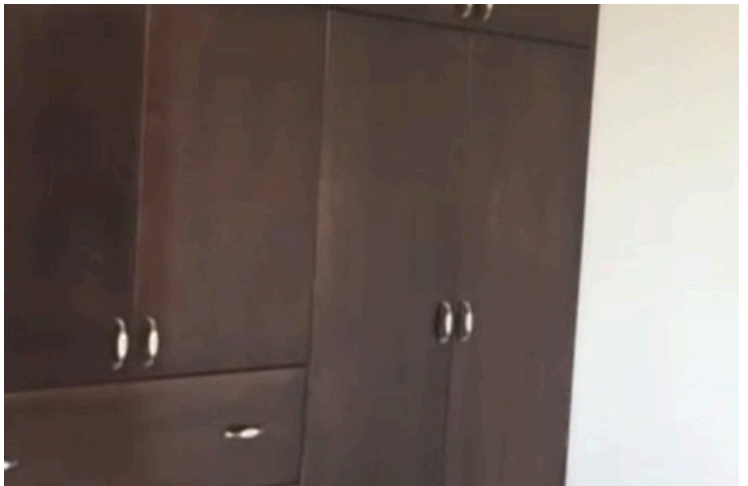
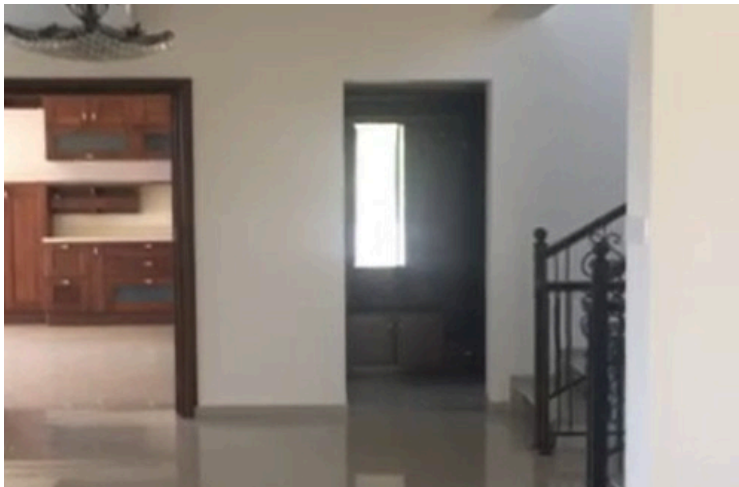
#14349

Detached 4 Bedroom Villa in Pareklissia, Limassol (14349)

 Pareklissia, Limassol





€4,000,000





Overview

Specifications

Bedrooms		Bathrooms		Covered	
 4		 4		 350 m ²	
Type		Detached Villa			
Toilets		5			
Plot		4991 m ²			
Covered veranda		15 m ²			
Basement		180 m ²			
Status		Key ready			
Year of construction		2010			
Title deed		Yes			
Furnished		Fully furnished			
Structure		Concrete			
Facade		Concrete			
Energy efficiency rating		 B+			

Description

A stunning and generously proportioned villa in the peaceful residential area of Parekklisia. This key-ready property combines space, privacy, and comfort, making it an ideal home for families or those who value a relaxed lifestyle with excellent accessibility.

Areas:

Internal Area: 350 m²

Semi basement area: 180 m2

Plot Size: 4991 m²

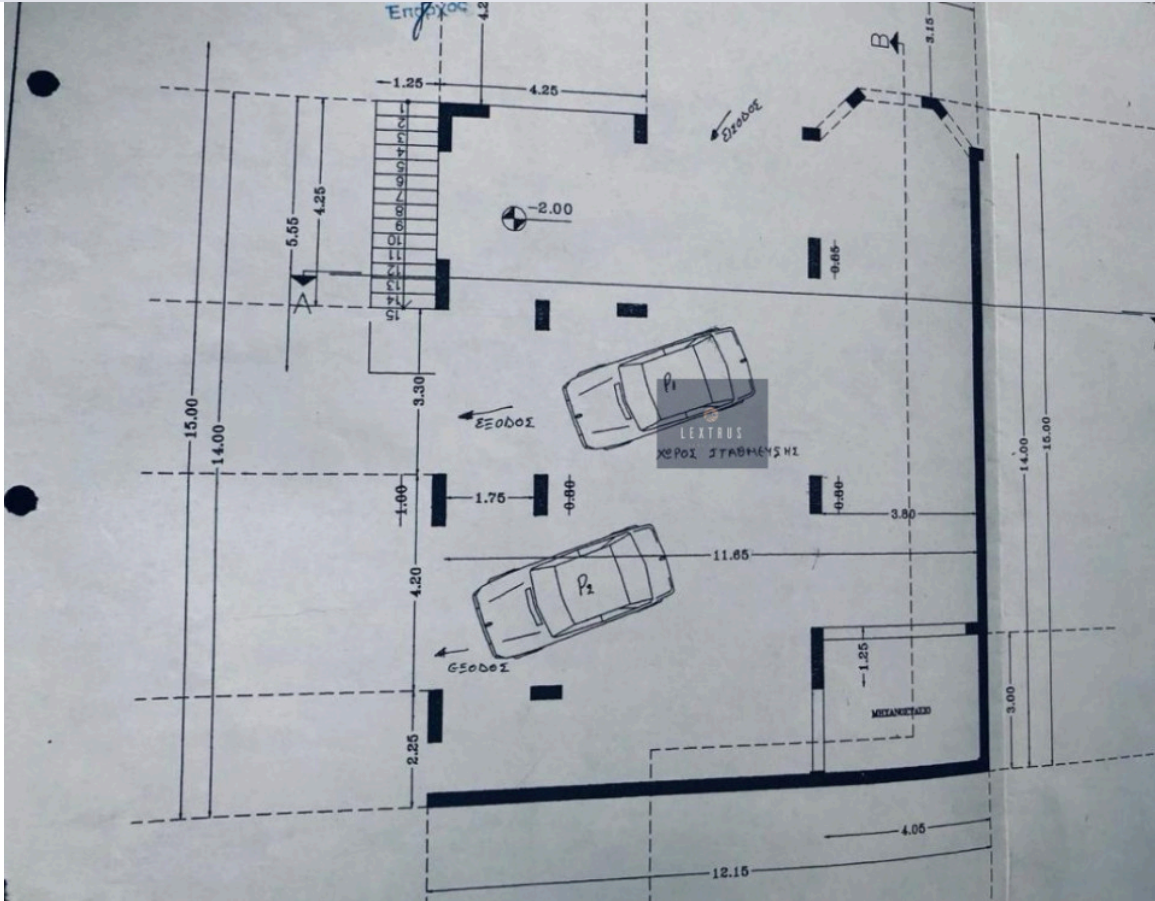
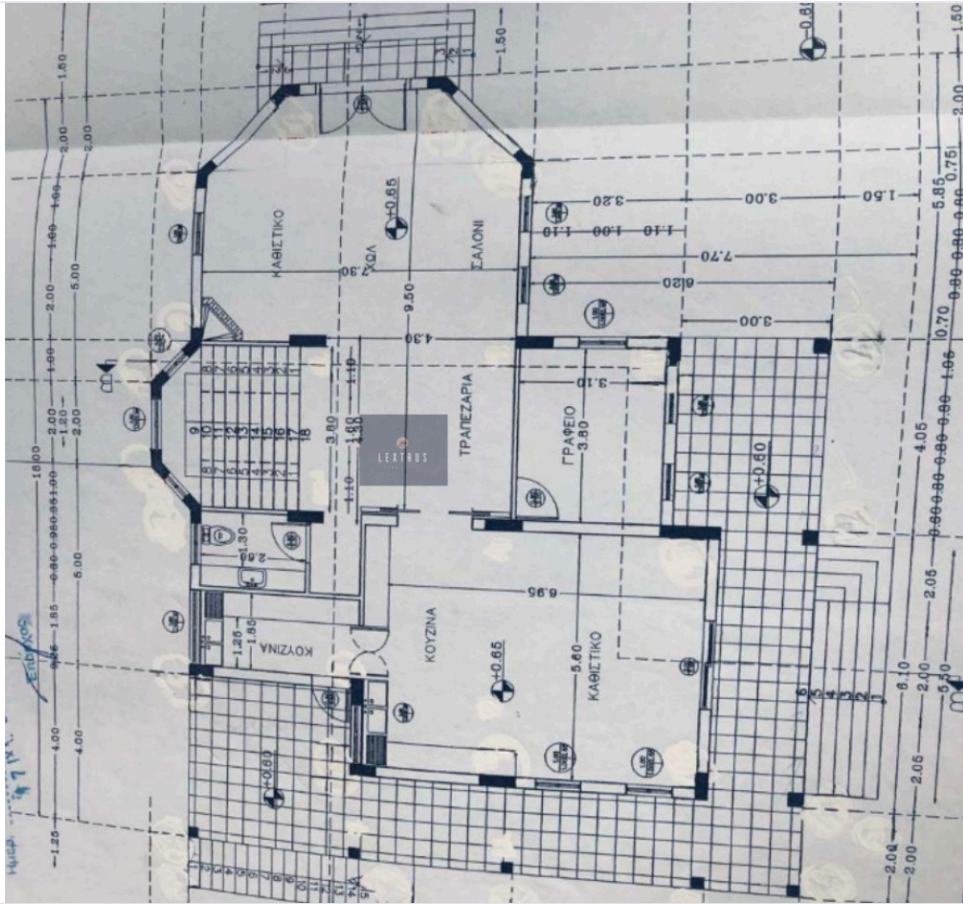
Delivery Date: March 2026

Property Features

- 4 spacious bedrooms and 4 modern bathrooms
- Bright open-plan living and dining areas with direct access to the terrace
- Fully furnished – move in immediately with no delays



Floor plans



Additional information

Facilities

Aircondition, Split system

Parking, Garage

Heating, Split system

Pool, Private

Landscaped garden

Features

Balcony

Bright

Easy access to main roads

Fitted wardrobes

Guest WC

Indoor fireplace

Barbeque

Double glazing

En suite bathroom

Garden

Guestroom

Internal stairs

Bath

Easy access to highway

Entrance gate

Garden, large

High ceilings

Investment opportunity

Distances

Amenities



500 m

Airport



54 km

Sea



6 km

Schools



2 km

Resort



5 km

Contact us



George Sergiou

☎ (+357) 94055813

✉ info@lextrusrealestate.com

