



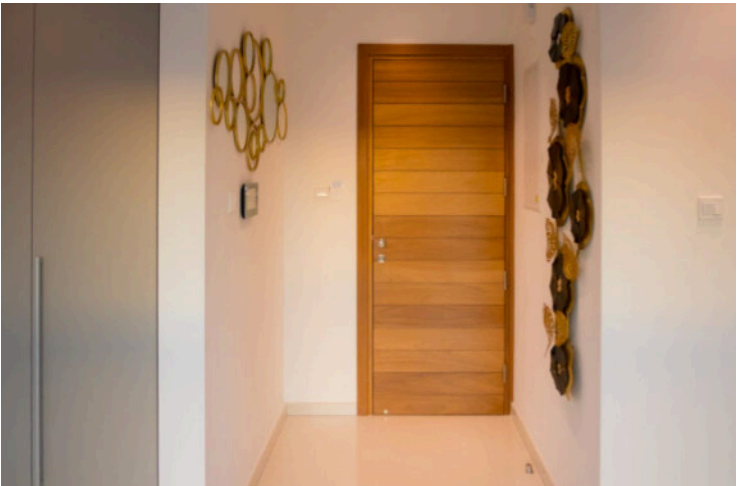
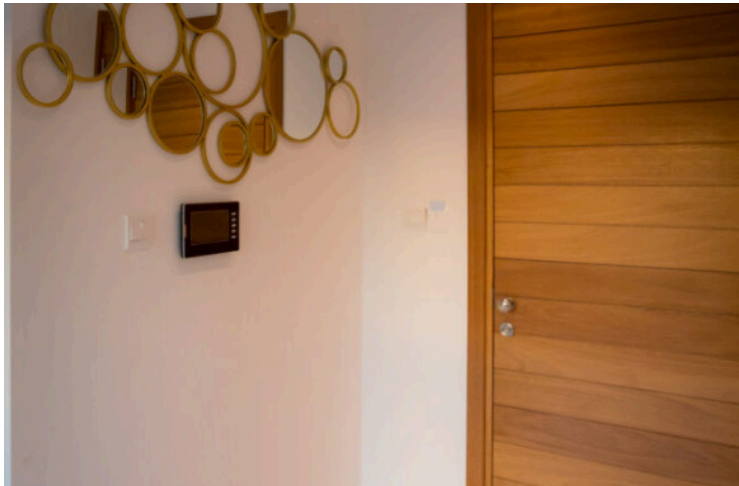
#14260

LUXURY 2 BEDROOM APARTMENT IN GERMASOGEIA, LIMASSOL (14260)

📍 Germasogeia, Limassol





€1,800 /month





Overview

Specifications

Bedrooms		Bathrooms		Covered	
 2		 2		 86 m ²	
Type		Apartment			
Toilets		2			
Status		Key ready			
Furnished		Fully furnished			
Structure		Concrete			
Facade		Concrete			
Energy efficiency rating		 A			

Description

LUXURY 2 BEDROOM APARTMENT IN GERMASOGEIA, LIMASSOL (14260)

Located in one of Limassol's most desirable neighborhoods, this key-ready apartment offers the perfect mix of style, comfort, and convenience. With a well-designed layout and quality finishes, it's an ideal choice for professionals, couples, or small families.

Measurements

Covered Internal Area: 86 m²

Property Highlights

- 2 spacious bedrooms and 2 elegant bathrooms, designed for comfort and privacy
- Modern open-plan kitchen and living area with contemporary finishes and large windows that bring in natural light
- Fully furnished with high-quality furniture and appliances – move in hassle-free
- Air conditioning throughout for year-round comfort
- Secure parking and elevator access in a well-maintained building
- Energy Efficiency Rating A – enjoy a greener home with lower utility costs



Additional information

Facilities

Aircondition, Split system

Elevator

Parking, Covered

Features

Balcony

Bath

Double glazing

Easy access to highway

Easy access to main roads

En suite bathroom

Fitted wardrobes

High ceilings

Investment opportunity

Luxury specifications

Modern design

Near amenities

Near bus route

Pressurized water system

Quiet area

Roof garden

Sound insulation

Spacious rooms

Thermal insulation

Veranda

Distances

Amenities



550 m

Airport



61 km

Sea



2.7 km

Schools



1.7 km

Resort



2.4 km

Contact us



George Sergiou

📞 (+357) 94055813

📧 info@lextrusrealestate.com

