



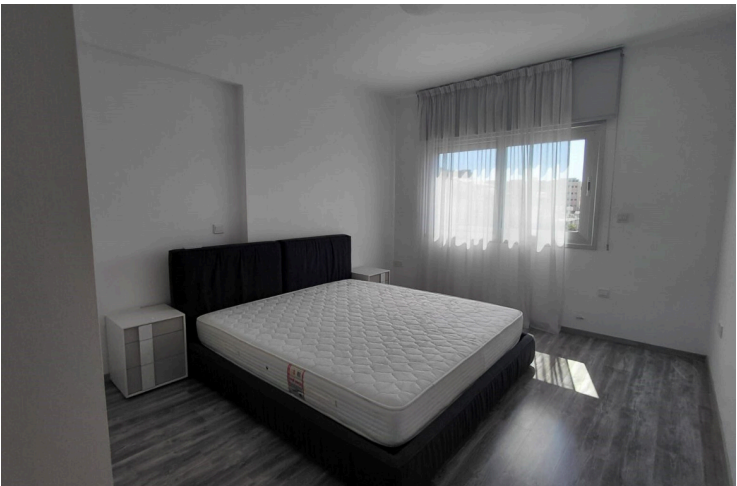
#14258

MODERN 2 BEDROOM APARTMENT IN TSIFLIKOUDIA, LIMASSOL (14258)

📍 Omonia, Limassol





€1,550 /month





Overview

Specifications

Bedrooms		Bathrooms		Covered	
 2		 1		 80 m ²	
Type		Apartment			
Toilets		1			
Status		Key ready			
Furnished		Fully furnished			
Structure		Concrete			
Facade		Concrete			
Energy efficiency rating		 A			

Description

MODERN 2 BEDROOM APARTMENT WITH IN TSIFLIKOUDIA, LIMASSOL (14258)

We are delighted to present this modern, key-ready two-bedroom apartment in the sought-after Tsiflikoudia area of Limassol. Located behind the Social Insurance Office and less than 750m from the sea, this property combines excellent construction quality with an unbeatable location.

Measurements

Covered Internal Area: 80 m²

Property Features

2 bright and spacious bedrooms

1 stylish, modern bathroom

Fully furnished with tasteful interiors and quality finishes

Open-plan living and dining area designed for comfort and convenience

Fully equipped kitchen with appliances included

Recently refreshed with a full indoor repainting – move-in ready condition



Additional information

Facilities

Aircondition, Split system

Elevator

Parking, Covered

Features

Balcony

Bath

Bright

Double glazing

Easy access to highway

Easy access to main roads

Fitted wardrobes

High ceilings

Investment opportunity

Jacuzzi

Luxury specifications

Modern design

Near amenities

Near bus route

Pressurized water system

Quiet area

Sound insulation

Spacious rooms

Thermal insulation

Veranda

Walking distance to beach

Distances

Amenities

 500 m

Airport

 59 km

Sea

 750 m

Schools

 850 m


Resort

 900 m

Contact us



George Sergiou

 (+357) 94055813

 info@lextrusrealestate.com

