



#14165

# 2 BEDROOM APARTMENT WITH COMMUNAL POOL IN GERMASOGEIA, LIMASSOL (14165)

📍 Germasogeia, Limassol

€665,000 +VAT













# Overview

## Specifications

Bedrooms		Bathrooms		Covered	
 2		 2		 75 m <sup>2</sup>	
Type		Apartment			
Toilets		2			
Status		Off plan			
Year of construction		2027			
		Furnished		Unfurnished	
		Structure		Concrete	
		Facade		Concrete	
		Energy efficiency rating		 A	

## Description

2 BEDROOM APARTMENT WITH COMMUNAL POOL IN GERMASOGEIA, LIMASSOL (14165)

This beautifully designed apartment offers a perfect balance of comfort, style, and convenience in one of Limassol’s most desirable areas. Situated on the third floor of a four-story building with elevator access, it provides modern living with excellent amenities in a vibrant yet peaceful neighborhood.

### Measurements

Covered Internal Area: 75 m<sup>2</sup>

Covered Veranda: 15 m<sup>2</sup>

Delivery Date: March 2027

### Property Features

Spacious open-plan living and dining area with direct access to verandas

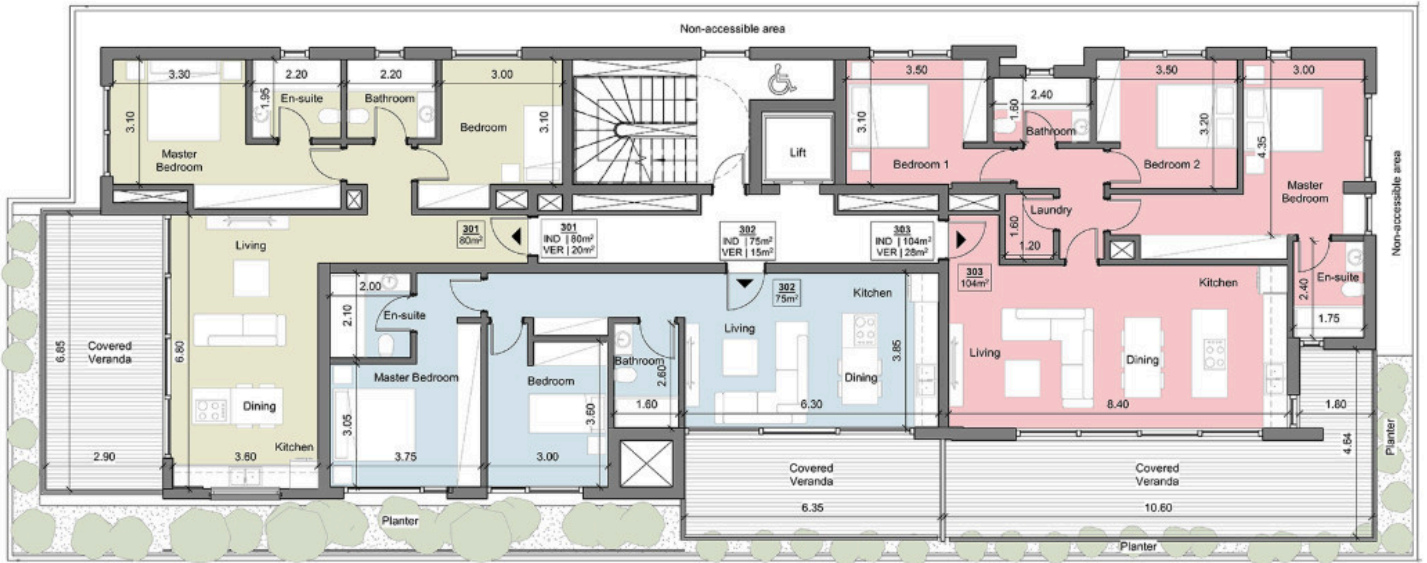
2 bedrooms and 2 modern bathrooms, ideal for both families and professionals

Central air conditioning for year-round comfort

Energy Efficiency Class A, ensuring sustainability and reduced utility costs



# Floor plans



# Additional information

## Facilities

Aircondition, Central system

Elevator

Parking, Covered

Pool, Communal

Solar photovoltaic panels  
(provision)

## Features

Balcony

Bath

Double glazing

Easy access to highway

Easy access to main roads

Electric car charger (provision)

En suite bathroom

Entrance gate

Entrance gate, automated

Fitted wardrobes

High ceilings

Investment opportunity

Luxury specifications

Modern design

Near amenities

Pressurized water system

Quiet area

Rental potential

Smart home automation  
(provision)

Sound insulation

Spacious rooms

Thermal insulation

Veranda

Walking distance to beach

## Distances

Amenities



900 m

Airport



61 km

Sea



1.6 km

Schools



1 km

Resort




1.8 km

## Contact us



**George Sergiou**

 (+357) 94055813

 [info@lextrusrealestate.com](mailto:info@lextrusrealestate.com)

