



#14073

LUXURY 4 BEDROOM SEAFRONT APARTMENT IN LIMASSOL (14073)

📍 Limassol Marina, Limassol

€5,700,000 +VAT





Overview

Specifications

Bedrooms

 4


Bathrooms

 2

Covered

 252 m²

Type	Apartment
Showers	1
Toilets	1
Covered veranda	97 m²
Uncovered veranda	3 m²
Status	Key ready

Year of construction	2023
Furnished	Unfurnished
Structure	Concrete
Facade	Concrete
Energy efficiency rating	 A

Description

LUXURY 4 BEDROOM SEAFRONT APARTMENT IN LIMASSOL (14073)

@5.700.000 EUR PLUS VAT

Details:

Bedrooms - 4 Beds

Covered Internal Area: 252 m2

Covered Veranda: 97 m2

Uncovered Veranda: 3 m2

Common Area: 85 m2

Total Cov. Area: 434 m2

Parking Space: 2

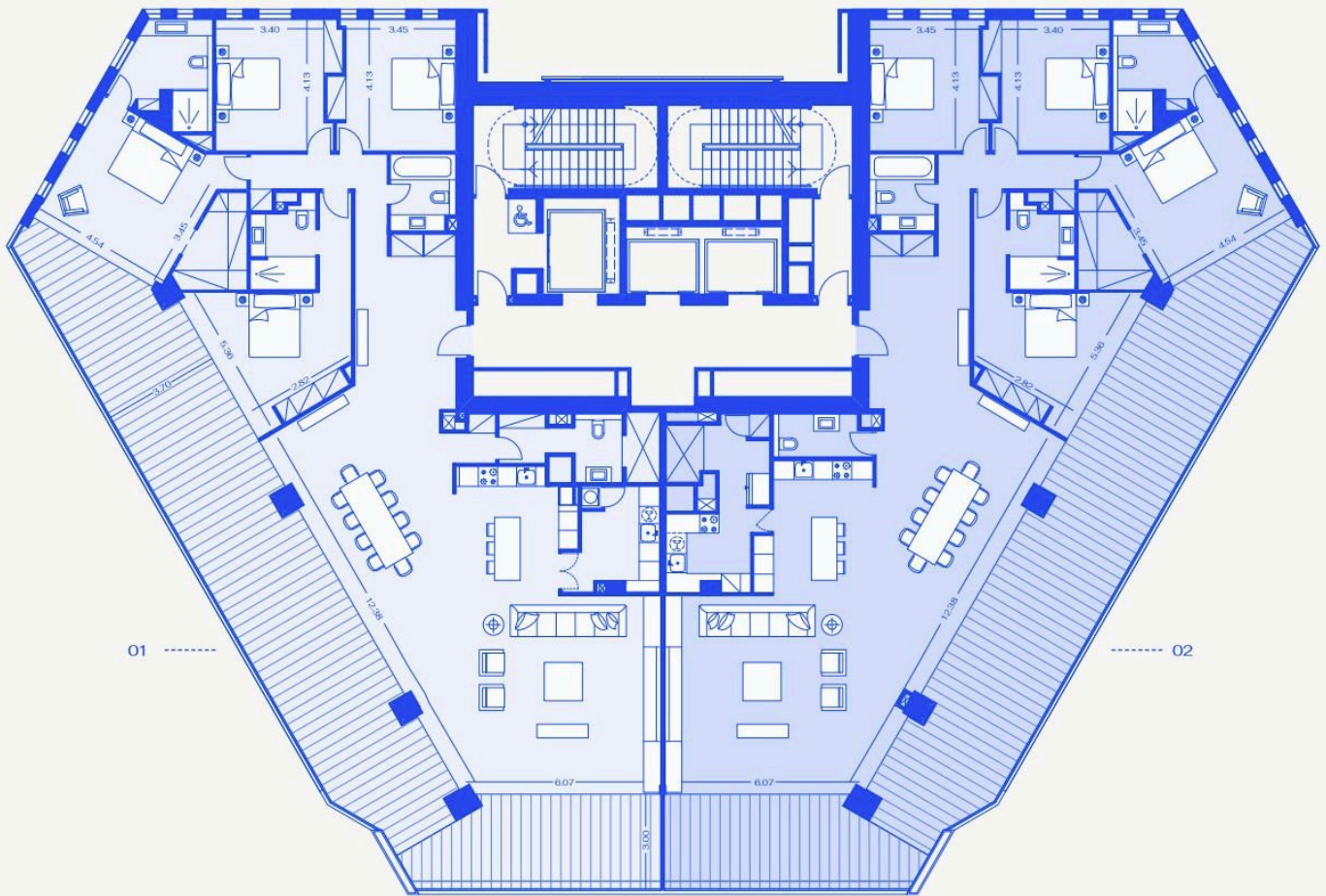
Ready to move in

LIVING HERE benefits from a host of resident-only facilities. Our gyms, swimming pools, bars, children's play area and landscaped gardens are reserved exclusively for your private enjoyment.

EVERY APARTMENT is imaginatively designed and impeccably finished, with stunning views across the Mediterranean from large, covered terraces. Layouts are distinguished by detail and optimised for a seamless living experience.



Floor plans



Additional information

Facilities

Aircondition, Provision

Heating, Provision

Pool, Communal

Elevator

Indoor pool, Communal

Storage

Gym

Parking, Covered

Features

Alarm system (provision)

Easy access to main roads

Luxury specifications

Near bus route

Roof garden

Sound insulation

Veranda

Bright

High ceilings

Modern design

Play room

Sea front

Spacious rooms

Double glazing

Investment opportunity

Near amenities

Quiet area

Sea view

Thermal insulation

Distances

Amenities

 850 m

Airport

 65 km

Sea

 250 m


Schools

 2.7 km

Contact us



George Sergiou

 (+357) 94055813

 info@lextrusrealestate.com

