



#14028

? Exclusive 1-Bedroom Apartment in the Heart of Limassol City Center ?? (14028)

📍 Historical Center, Limassol





€400,000 +VAT





Overview

Specifications

Bedrooms		Bathrooms		Covered	
 1		 1		 51 m ²	
Type	Apartment				
Toilets	1				
Status	Under construction				
Year of construction	2026				
Furnished	Unfurnished				
Structure	Concrete				
Facade	Concrete				
Communal charge frequency	Monthly				
Energy efficiency rating	 A				

Description

? Exclusive 1-Bedroom Apartment in the Heart of Limassol City Center ?? (14028)

@EUR 400.000 +VAT

Discover urban living at its finest in this deluxe apartment located just 1 km from the sea. A true gem in the historical center of Limassol, offering a perfect blend of modern elegance and vibrant city life.

Property Details:

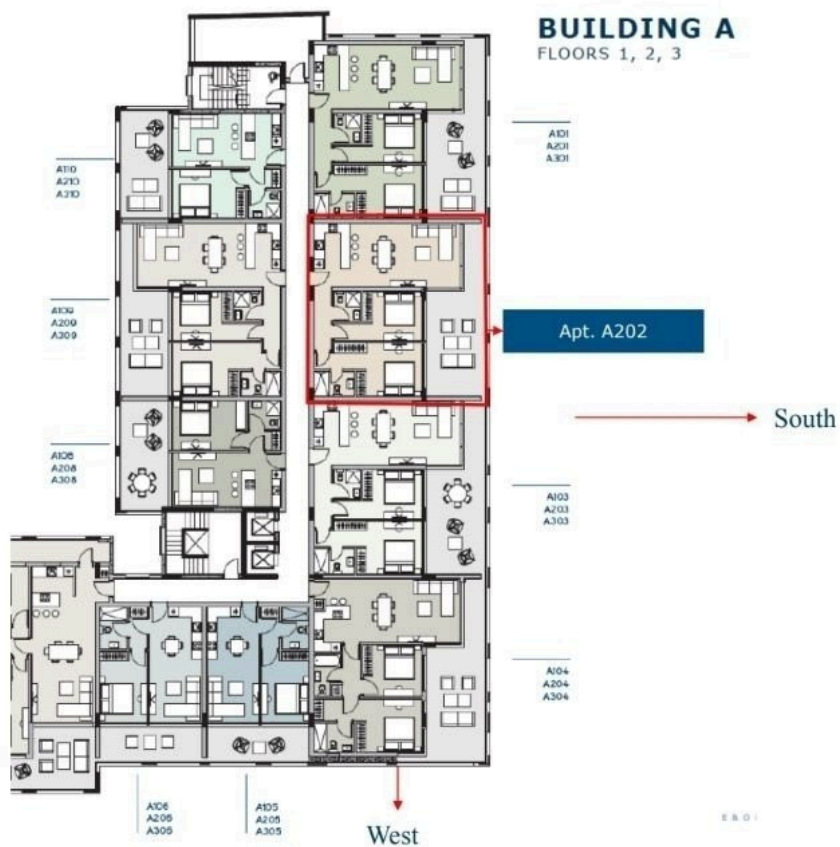
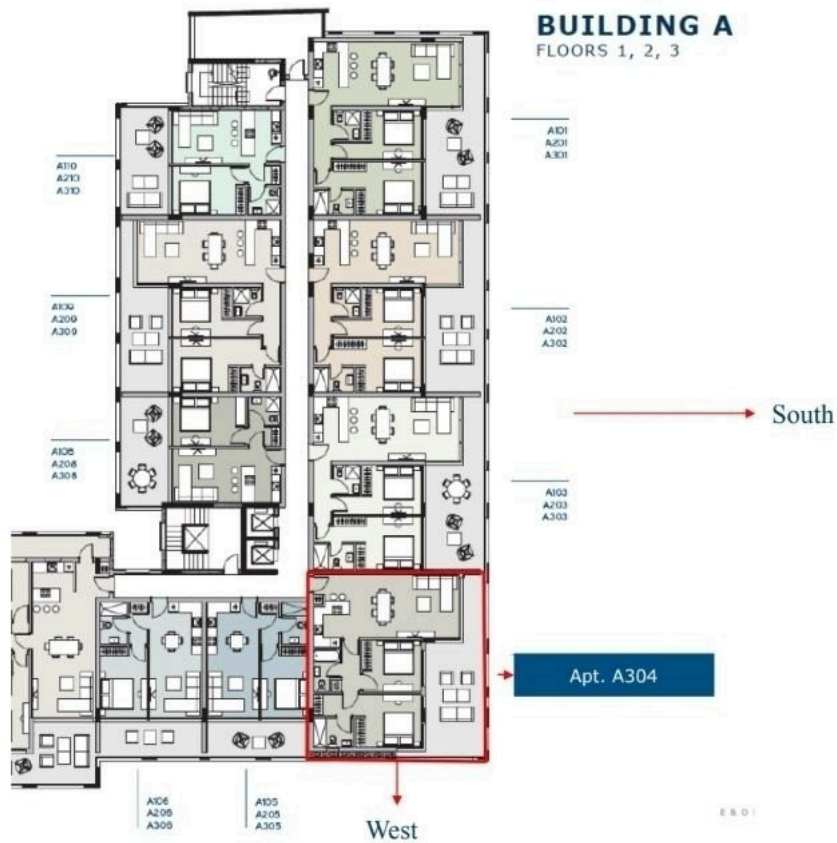
Type: Apartment / Status: Off Plan
Floor: 2 / Floors: 3 / Parking Spaces: 1 / Living Rooms: 1 / Kitchens: 1
Bedrooms: 1 / Bathrooms: 1 / Toilets: 1
Year of Construction: 2026 / Energy Efficiency Rating: A
Move-in Ready: Dec 30, 2026

Key Features:

Covered Area: 51 m2 / Covered Veranda: 21 m2



Floor plans



Additional information

Facilities

Aircondition, Provision

Gym

Solar photovoltaic panels

Storage

Elevator

Heating, Underfloor

Solar photovoltaic panels
(provision)

Gated complex

Parking, Covered

Solar water heater

Features

Bar

Central satellite system

Combined kitchen and dining
area

Entrance gate

Granite countertops

Near amenities

Parquet flooring

Smart home automation

CCTV (provision)

Central sound system

Double glazing

Entrance gate, automated

High ceilings

Near bus route

Pool bar

Thermal insulation

Central TV system

Ceramic tiles

Easy access to main roads

Fitted wardrobes

Modern design

Open plan

Pressurized water system

Utility room

Distances

Amenities

 150 m

Airport

 55 km

Sea

 900 m

Public transport

 300 m


Schools

 580 m

Contact us



George Sergiou

 (+357) 94055813

 info@lextrusrealestate.com

