

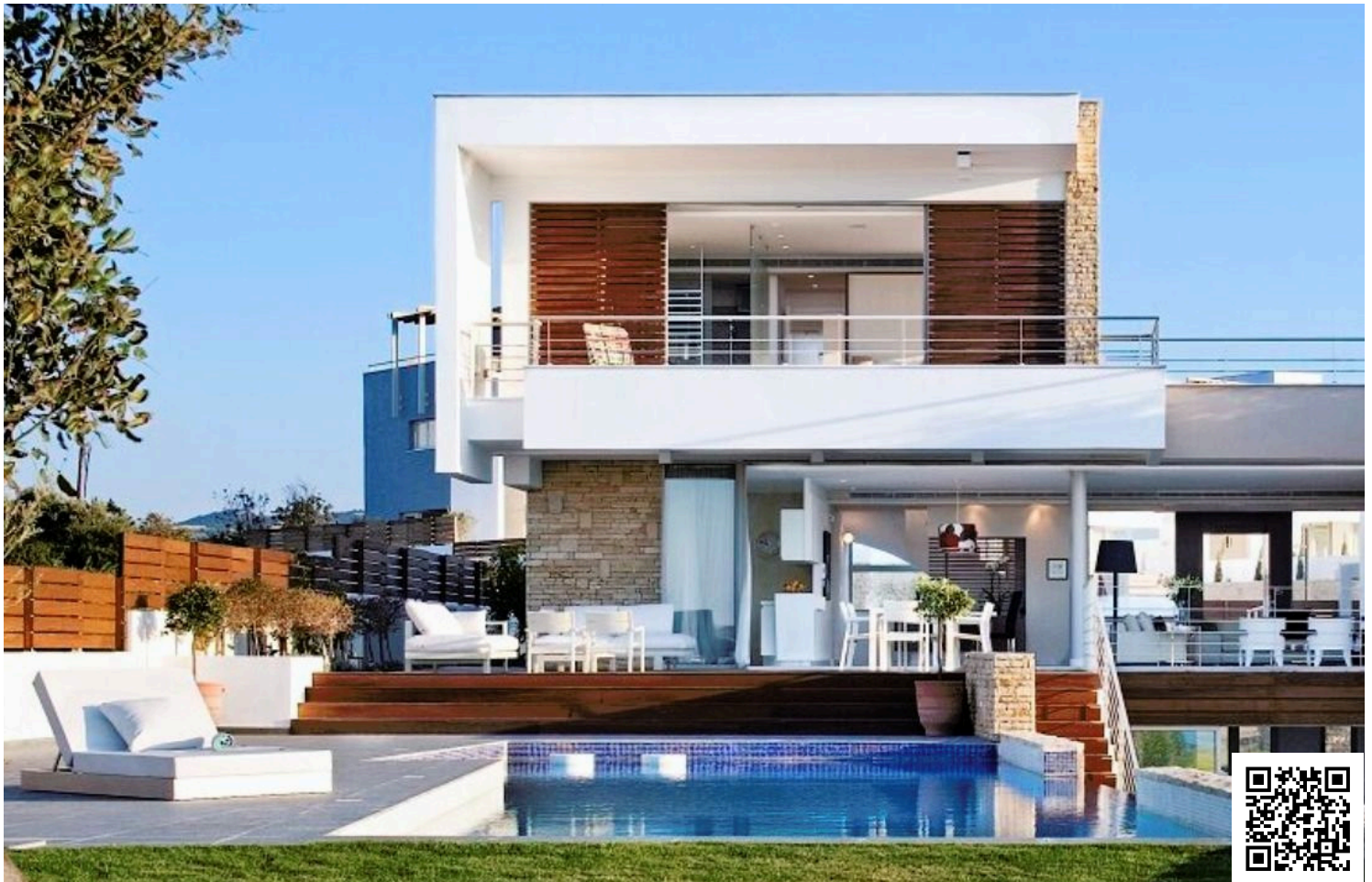


#14022

? Seaside Splendor 3 Bed Villa : A Luxurious Haven in Latsi, Paphos ?? (14022)

📍 Latchi, Paphos





€2,150,000 +VAT





Overview

Specifications

Bedrooms		Bathrooms		Covered	
 4		 3		 344 m ²	
Type		Detached Villa			
Toilets		3			
Plot		775 m ²			
Status		Key ready			
Year of construction		2023			
Furnished		Unfurnished			
Structure		Concrete			
Facade		Concrete			
Energy efficiency rating		 A			

Description

? Seaside Splendor 3 Bed Villa : A Luxurious Haven in Latsi, Paphos ?? (14022)

@EUR 2,150,000 +VAT

Discover the epitome of coastal sophistication in this meticulously designed detached villa nestled within the prestigious resort. Boasting seamless integration of indoor and outdoor spaces, contemporary elegance, and traditional Cypriot simplicity, this key-ready villa offers a unique living experience that transcends conventional boundaries.

Property Highlights:

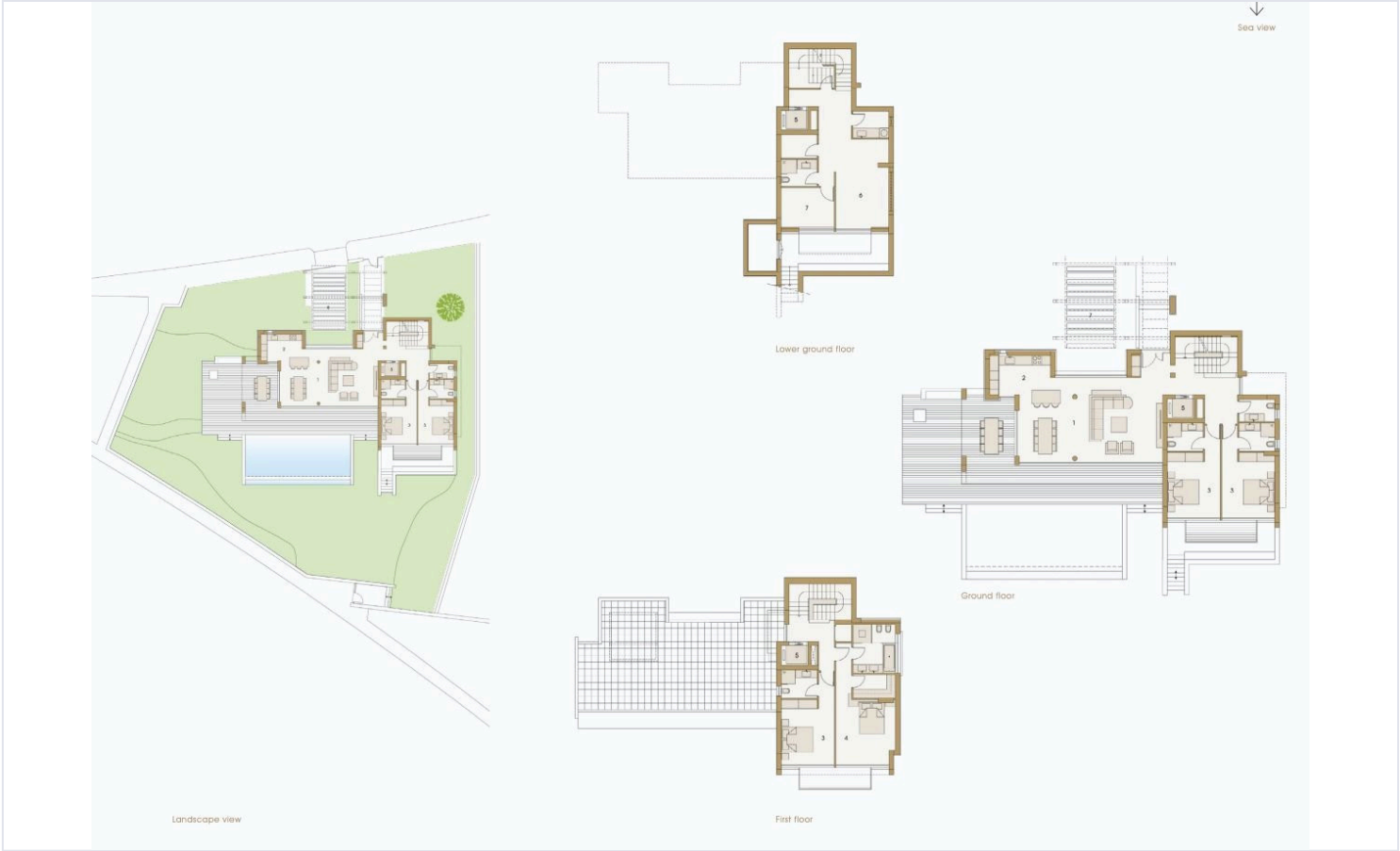
Type: Detached Villa
Status: Key Ready
Floors: 2
Parking Spaces: 2
Bedrooms: 4 | Bathrooms: 3 | Toilets: 3
Basement: Yes | Furnished: Unfurnished
Year of Construction: 2023 | Energy Efficiency Rating: A

Amenities & Location:

Proximity to Sea: 100m | Resort: 800m | Airport: 40km



Floor plans



Additional information

Facilities

Aircondition, Provision

Landscaped garden

Solar water heater

Gated complex

Parking, Garage

Storage

Heating, Provision

Solar photovoltaic panels (provision)

Features

Balcony

Fitted wardrobes

Near amenities

Openings in opposite sides

Veranda

Veranda, large

Bright

Granite countertops

Next to green area

Pressurized water system

Veranda, back

Walk-in closet

En suite shower

Modern design

Open plan

Separate dining area

Veranda, front

Walking distance to beach

Distances

Amenities



600 m

Airport



40 km

Sea



100 m

Resort



800 m

Contact us



George Sergiou

📞 (+357) 94055813

📧 info@lextrusrealestate.com

