



#14011

# Modern 2 Bedroom Apartment in Vibrant Town Center

📍 Town Center, Paphos

**€538,000** +VAT













# Overview

## Specifications

Bedrooms		Bathrooms		Covered	
 2		 2		 95.8 m <sup>2</sup>	
Type		Apartment			
Toilets		2			
Covered veranda		28.4 m <sup>2</sup>			
Uncovered veranda		4 m <sup>2</sup>			
Covered parking		12 m <sup>2</sup>			
Status		Off plan			
Year of construction		2027			
Furnished		Unfurnished			
Structure		Concrete			
Facade		Concrete			
Energy efficiency rating		 A+			

## Description

Modern 2 Bedroom Apartment In Town Center, Paphos (14011)

A stylish and well-appointed apartment designed for comfort and modern city living. Offering 95.80 m<sup>2</sup> of covered internal area and a 28.40 m<sup>2</sup> covered veranda, this residence combines functionality with a contemporary aesthetic.

Delivery Date: September 2027

### Measurements

Covered Internal Area: 95.8 m<sup>2</sup>

Covered Veranda: 28.4 m<sup>2</sup>

### Property Features

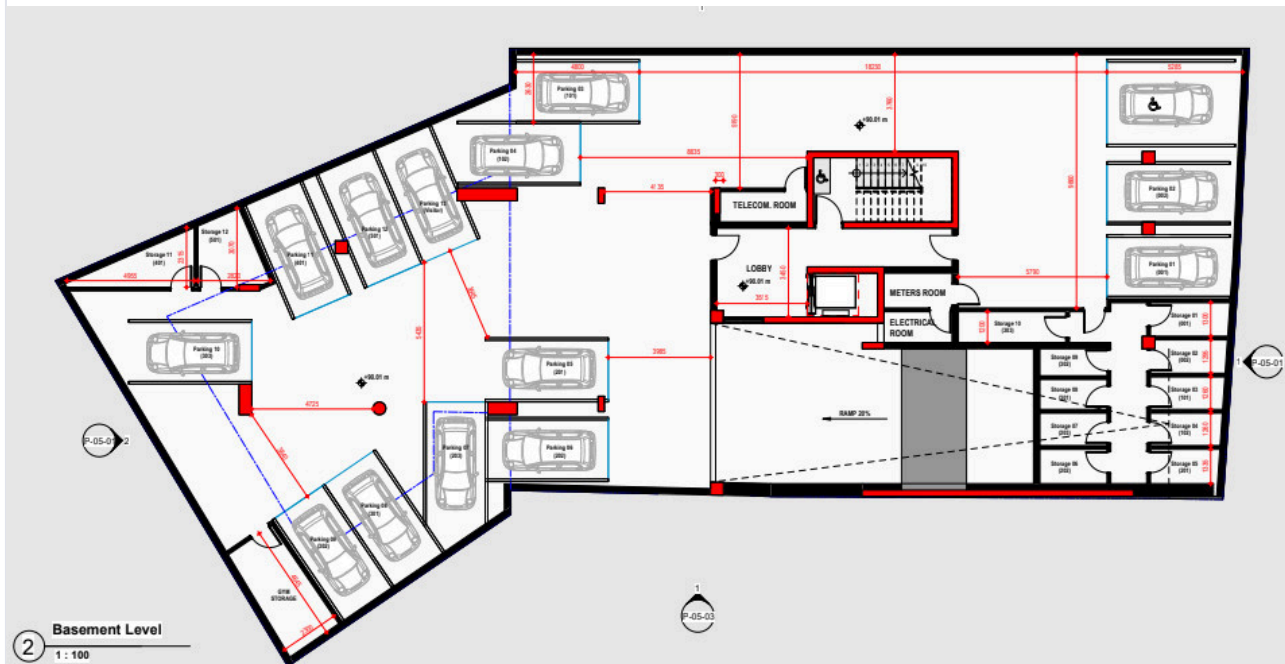
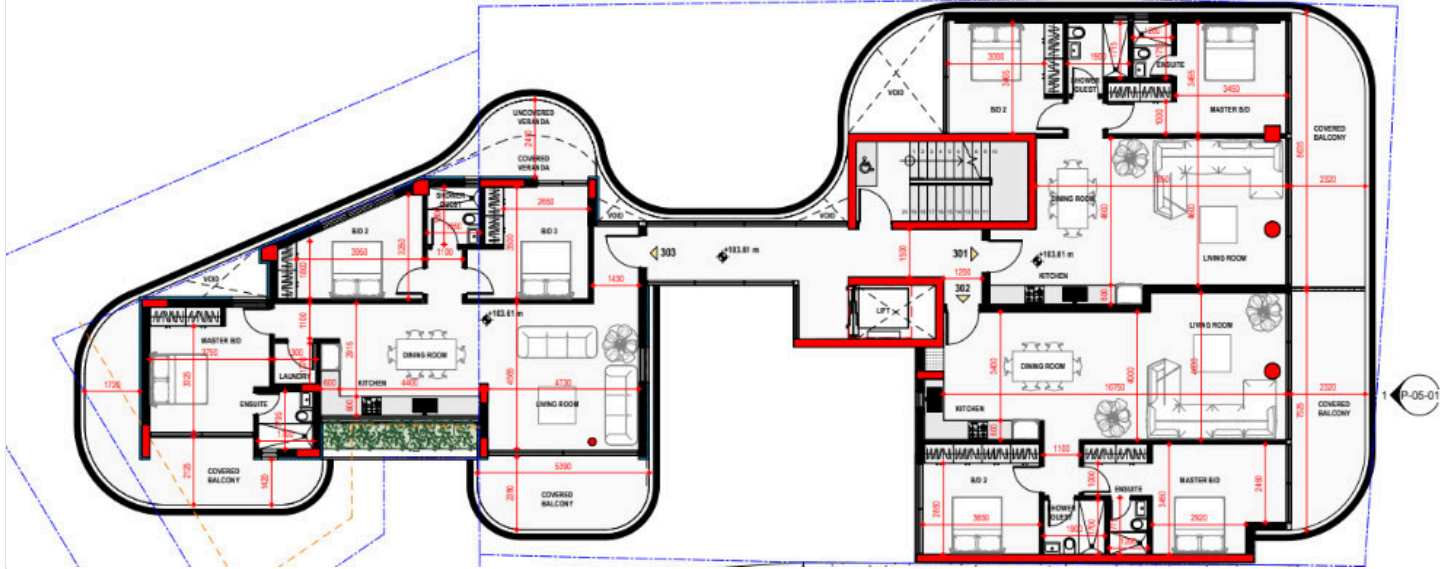
2 spacious bedrooms and 2 modern bathrooms

Bright open-plan living and dining area

Large covered veranda for outdoor relaxation and entertaining



# Floor plans



# Additional information

## Facilities

Aircondition, Provision

Parking, Covered

Elevator

Pool, Communal

Heating, Underfloor

Solar photovoltaic panels (provision)

## Features

Balcony

Easy access to highway

Fitted wardrobes

Luxury specifications

Pressurized water system

Sound insulation

Walking distance to beach

Bath

Easy access to main roads

High ceilings

Modern design

Quiet area

Spacious rooms

Double glazing

En suite bathroom

Investment opportunity

Near amenities

Rental potential

Thermal insulation

## Distances

Amenities

 550 m

Airport

 18.9 km

Sea

 2.6 km

Schools

 200 m


Resort

 1.3 km

## Contact us



**George Sergiou**

 (+357) 94055813

 [info@lextrusrealestate.com](mailto:info@lextrusrealestate.com)

