



#14009

Modern 2 Bedroom Apartment In Town Center, Paphos (14009)

📍 Town Center, Paphos





€408,000 +VAT





Overview

Specifications

Bedrooms		Bathrooms		Covered	
 2		 2		 86.9 m ²	
Type		Apartment		Furnished	
Toilets		2		Unfurnished	
Status		Off plan		Structure	
Year of construction		2027		Facade	
				Energy efficiency rating	
				 A+	

Description

Modern 2 Bedroom Apartment In Town Center, Paphos (14009)

A stylish and well-appointed apartment designed for comfort and modern city living. Offering 86.9 m² of covered internal area and a 19.4 m² covered veranda, this residence combines functionality with a contemporary aesthetic.

Delivery Date: September 2027

Measurements

Covered Internal Area: 86.9 m²

Covered Veranda: 19.4 m²

Property Features

2 spacious bedrooms and 2 modern bathrooms

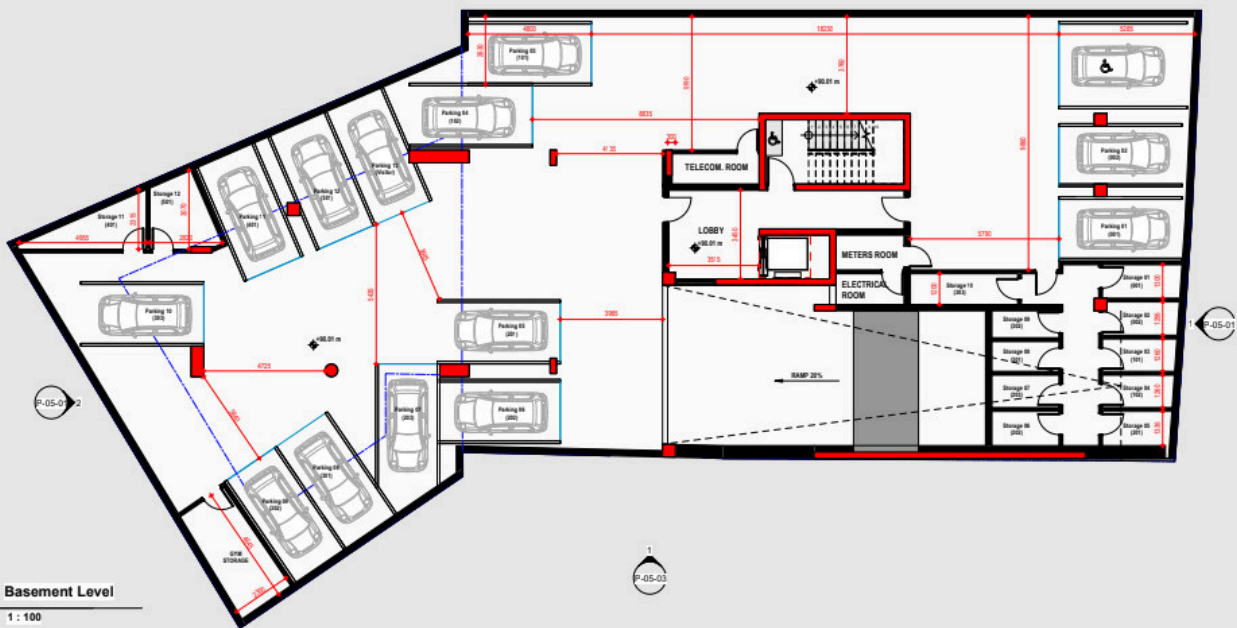
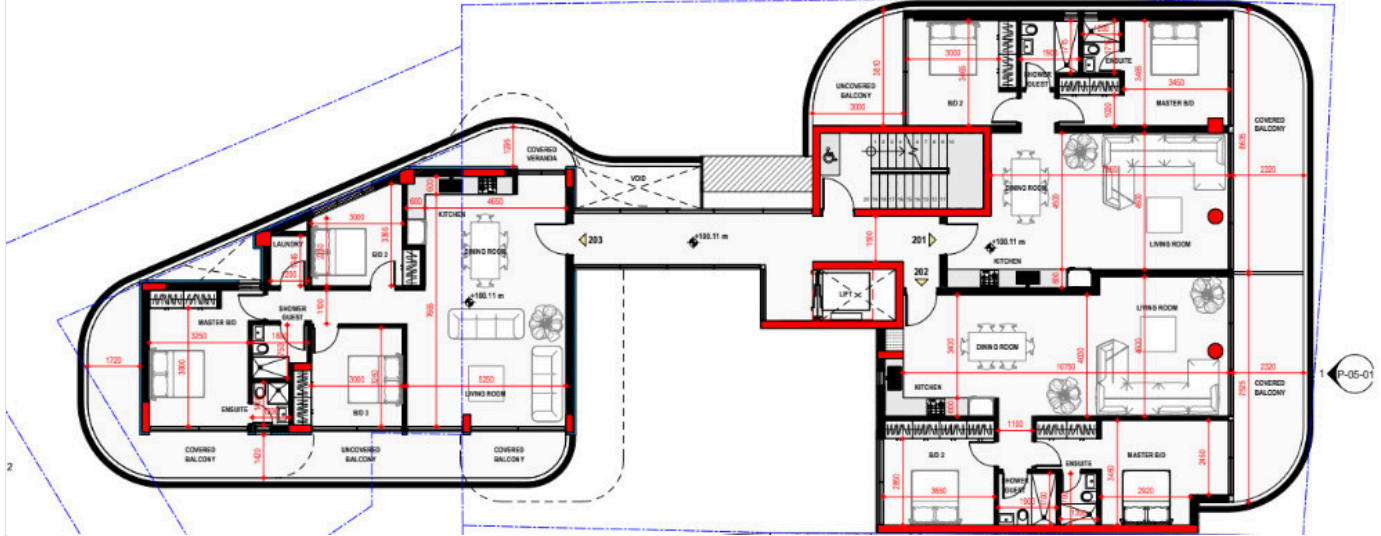
Bright open-plan living and dining area

Large covered veranda for outdoor relaxation and entertaining

Energy Efficiency Rating: A+, ensuring lower utility costs and sustainable living



Floor plans



Additional information

Facilities

Aircondition, Provision

Parking, Covered

Elevator

Pool, Communal

Heating, Underfloor

Features

Balcony

Easy access to highway

Fitted wardrobes

Luxury specifications

Pressurized water system

Sound insulation

Walking distance to beach

Bath

Easy access to main roads

High ceilings

Modern design

Quiet area

Spacious rooms

Double glazing

En suite bathroom

Investment opportunity

Near amenities

Rental potential

Thermal insulation

Distances

Amenities

 550 m

Airport

 18.9 km

Sea

 2.6 km

Schools

 200 m


Resort

 1.3 km

Contact us



George Sergiou

 (+357) 94055813

 info@lextrusrealestate.com

