



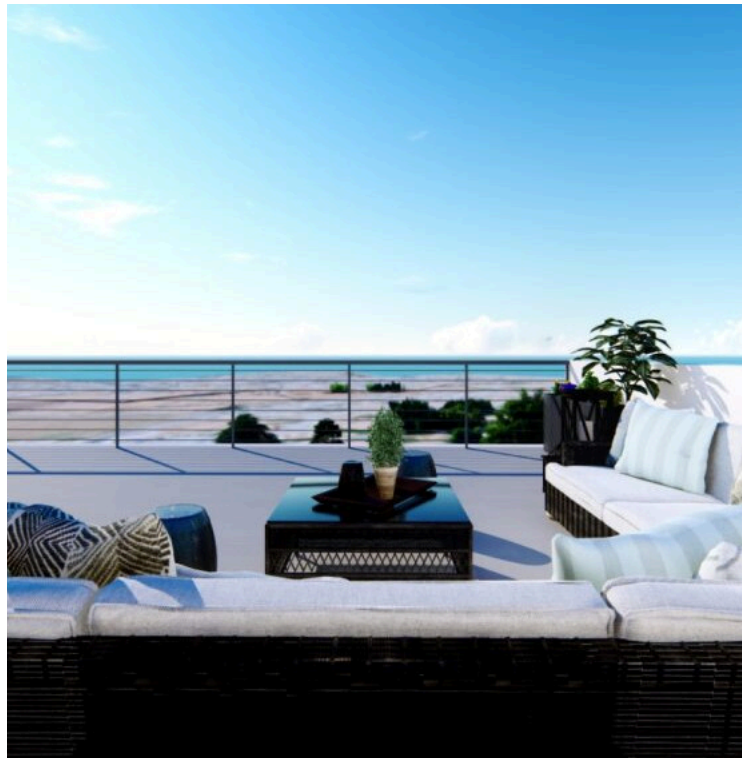
#13896

Modern 4 Bedroom Apartment in Emba, Paphos (13896)

📍 Empa, Paphos

€380,000 +VAT





Overview

Specifications

Bedrooms



4

Bathrooms




2

Covered



119.35 m²

Type	Apartment
Toilets	2
Covered veranda	20.7 m²
Covered parking	28.13 m²
Status	Off plan

Year of construction	2027
Furnished	Unfurnished
Structure	Concrete
Facade	Concrete
Energy efficiency rating	 A

Description

Modern 4 Bedroom Apartment in Emba, Paphos (13896)

A beautifully designed off-plan apartment located in the peaceful and family-friendly neighborhood of Empa. Currently under construction and scheduled for delivery in August 2027, this home offers a perfect combination of spacious interiors, modern comforts, and an excellent location.

Measurements

Covered Internal Area: 119.35 m²

Covered Veranda: 20.7 m²

Property Features

4 comfortable bedrooms and 2 stylish bathrooms – ideal for families or those seeking extra space

First-floor position in a modern two-story building for enhanced privacy

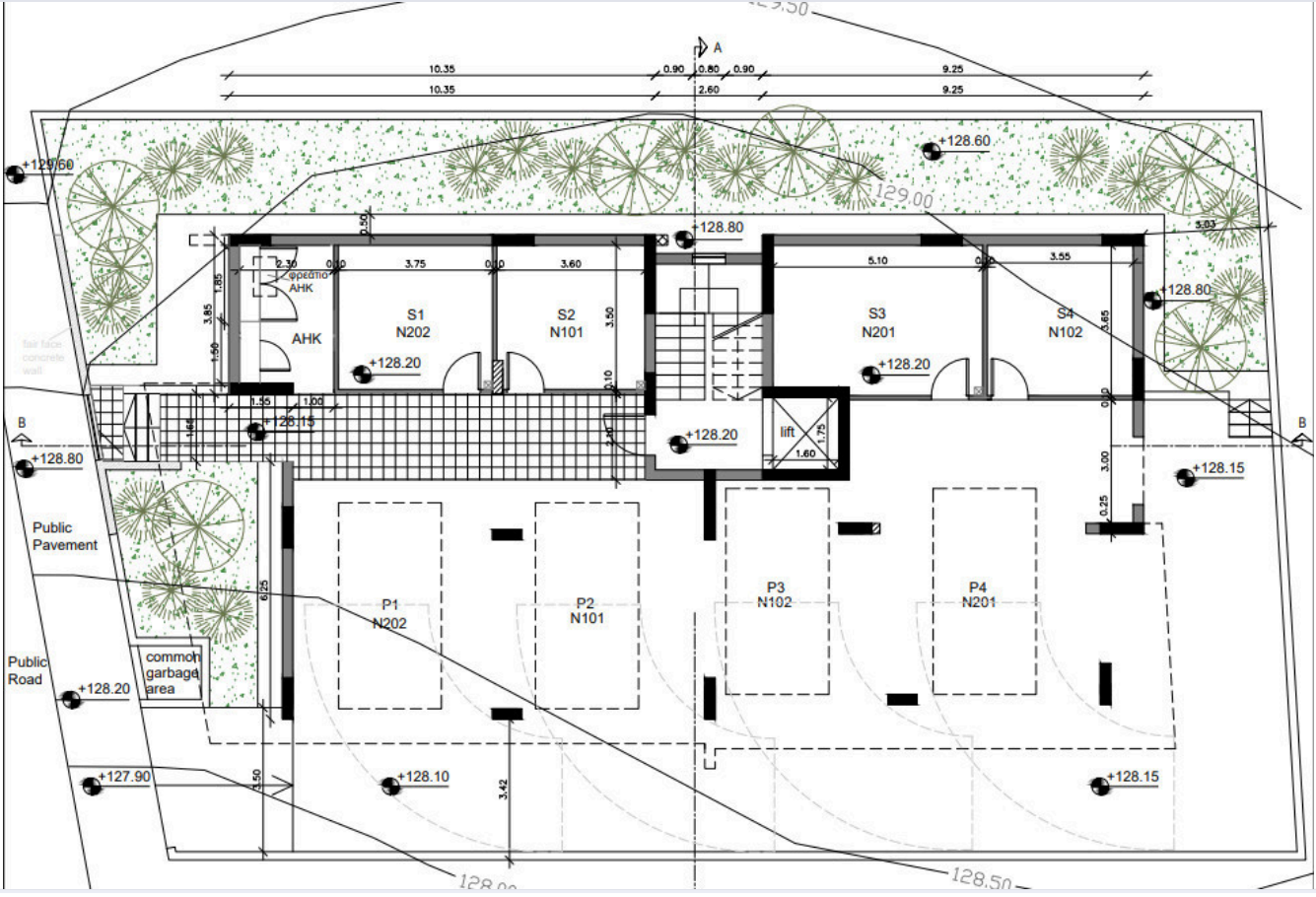
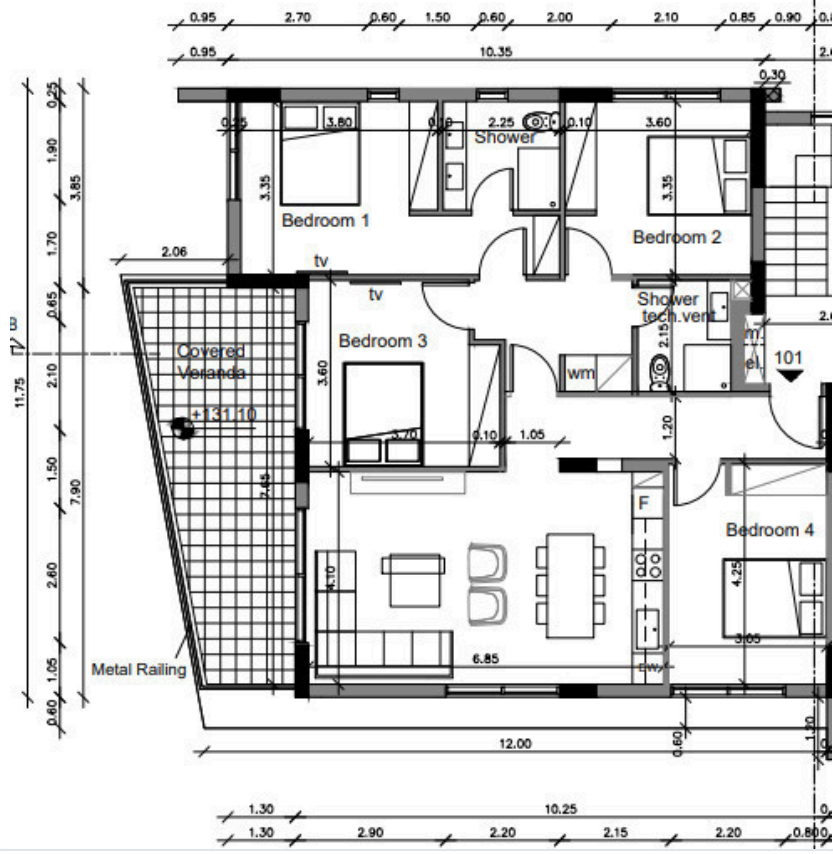
Elevator access for convenience at all ages and mobility levels

Energy Efficiency Class A – enjoy lower utility costs and a sustainable living environment

Underfloor heating for year-round comfort



Floor plans



Additional information

Facilities

Aircondition, Provision

Elevator

Heating, Underfloor

Parking, Covered

Features

Balcony

Bath

Double glazing

Easy access to highway

Easy access to main roads

En suite bathroom

Fitted wardrobes

High ceilings

Investment opportunity

Luxury specifications

Modern design

Near amenities

Pressurized water system

Quiet area

Rental potential

Sound insulation

Spacious rooms

Thermal insulation

Veranda

Distances

Amenities

 1.9 km

Airport

 19 km

Sea

 3.8 km

Schools

 1.3 km


Resort

 3.5 km

Contact us



George Sergiou

 (+357) 94055813

 info@lextrusrealestate.com

