



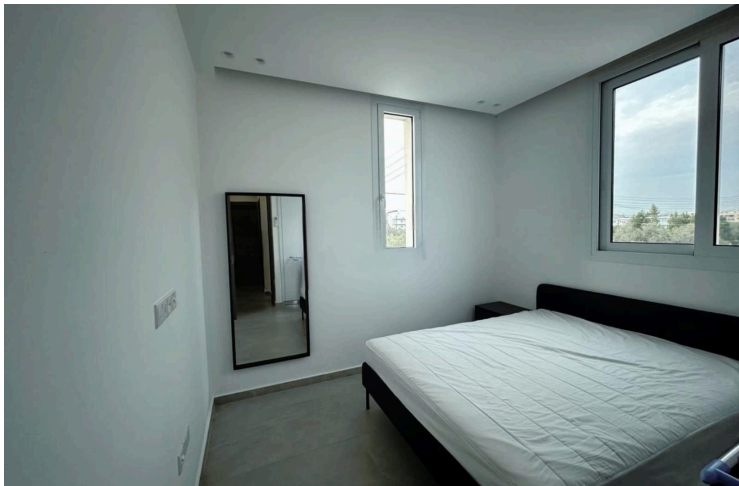
#13752

Elegant 5-Bedroom Home in Prime Livadia Location – Move-In Ready (13752)

📍 Livadia, Larnaca





€500,000





Overview

Specifications

| | | | | | |
|---|--------------------|---|--|--|---|
| Bedrooms | | Bathrooms | | Covered | |
|  5 | |  4 | |  210 m ² | |
| | | | | | |
| Type | Detached House | | | | |
| Toilets | 4 | | | | |
| Plot | 308 m ² | | | | |
| Courtyard | 90 m ² | | | | |
| Status | Resale | | | | |
| Year of construction | 2023 | | | | |
| | | | | | |
| Title deed | | | | | Final approval |
| Furnished | | | | | Fully furnished |
| Structure | | | | | Concrete |
| Facade | | | | | Concrete |
| Energy efficiency rating | | | | |  A |

Description

? Spacious | Stylish | Energy-Efficient

Discover your dream home with this stunning, recently built (just 2 years old) property offering premium-quality finishes, exceptional space, and all the comforts of modern living. Whether you're looking for a family residence or a smart investment, this home checks all the boxes.

? Property Highlights:

Plot Size: 308 m²

Covered Area: 210 m²

Layout:

Ground Floor: 210 m² (including parking + balcony)

First Floor: 110 m²

Second Floor: 60 m²

Backyard: Approx. 90 m² – perfect for a garden, kids’ play area, or outdoor entertaining



Additional information

Facilities

Aircondition, Split system

Solar water heater

Heating, Central

Storage

Parking, Covered

Features

Balcony

Bright

Connected to electric mains

Energy efficient doors/windows

Guest WC

Luxury specifications

Pressurized water system

Barbeque

CCTV

Double glazing

Garden

High ceilings

Modern design

Thermal insulation

Bath

Combined kitchen and dining area

Easy access to main roads

Granite countertops

Investment opportunity

Open plan

Distances

Amenities



400 m

Airport



11 km

Sea



2.5 km

Public transport



500 m

Contact us



Soteris Artikoglou

📞 (+357) 99163778

✉️ artsotiris@gmail.com

