



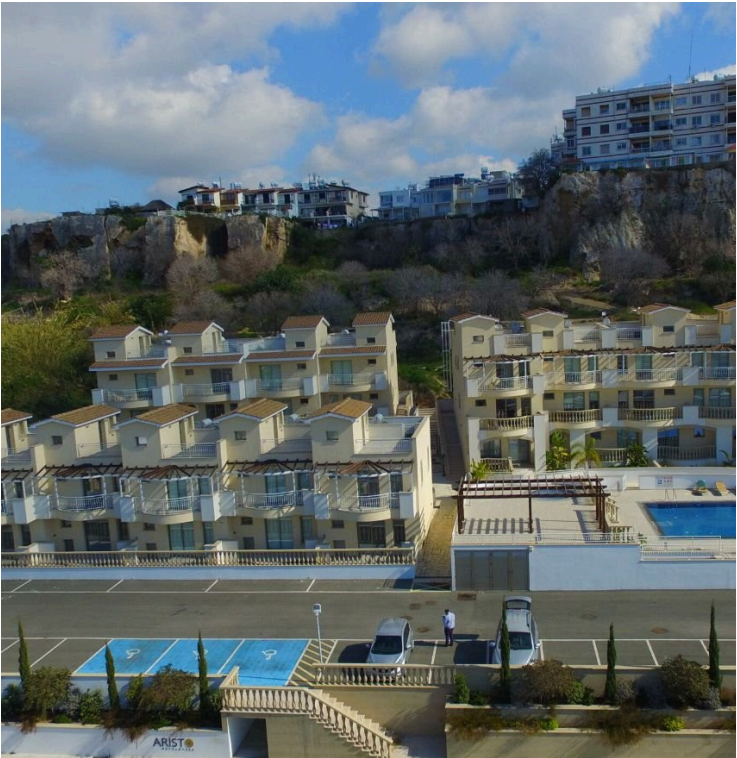
#13682

Modern 2 Bedroom Apartment with Sea View in Universal, Paphos (13682)

📍 Universal, Paphos





€430,000 +VAT





Overview

Specifications

Bedrooms		Bathrooms		Covered	
 2		 2		 85.58 m ²	
Type		Apartment			
Toilets		2			
Status		Off plan			
Year of construction		2028			
Furnished		Unfurnished			
Structure		Concrete			
Facade		Concrete			
Energy efficiency rating		 B+			

Description

Modern 2 Bedroom Apartment with Sea View in Universal, Paphos (13682)

Experience modern living in this spacious, off plan Second floor apartment located in the highly desirable Universal area of Paphos. Completed in 2025, this stylish residence offers the perfect blend of comfort, convenience, and investment potential.

Property Overview

Covered Internal Area: 85.58 m²

Covered Veranda: 17.94 m²

Delivery: January, 2028

Features & Highlights

This beautifully designed apartment features a generous open-plan layout with high-quality finishes throughout. Whether you're looking for a permanent residence, a holiday home, or a smart investment, this property delivers on all fronts.

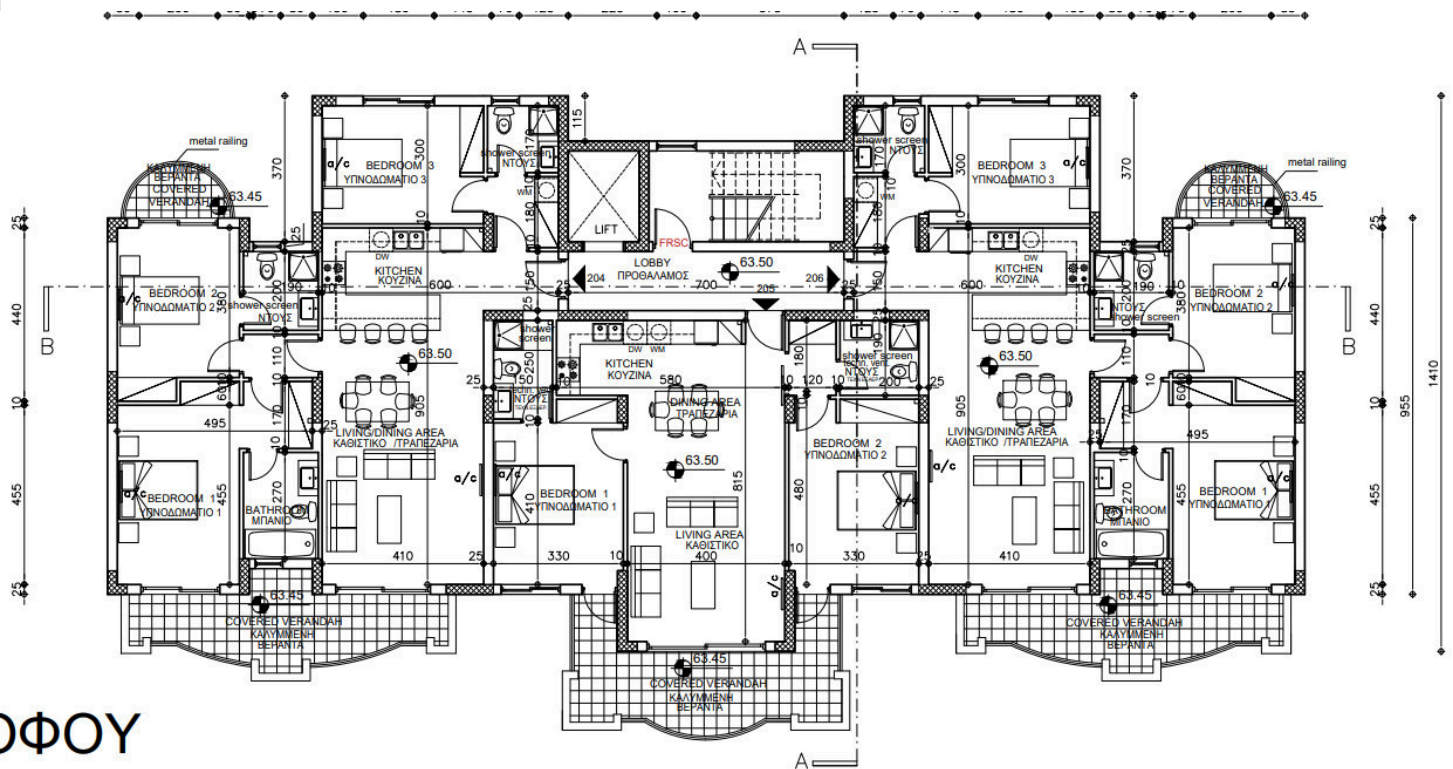
Two spacious bedrooms and Two contemporary bathrooms

Unfurnished, giving you the freedom to design and decorate to your personal taste

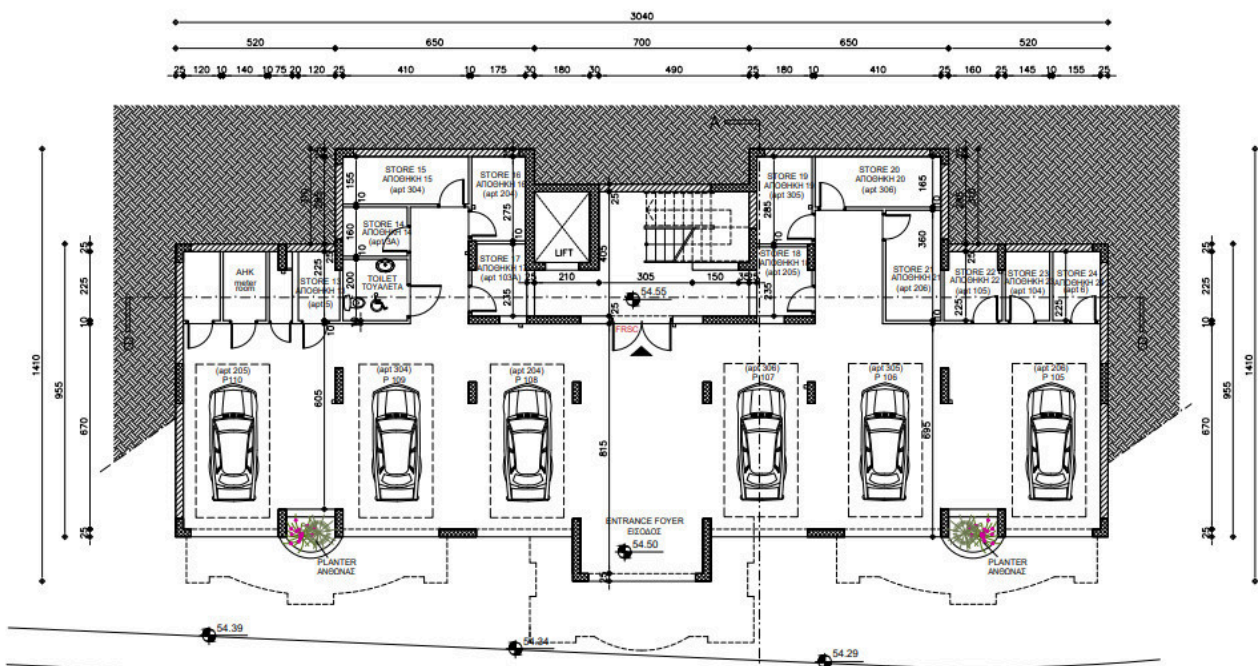
Elevator access within the building for added convenience



Floor plans



ΠΡΟΦΟΥ



Additional information

Facilities

Aircondition, Split system

Elevator

Gated complex

Parking, Uncovered

Pool, Communal

Features

Alarm system

Balcony, front

Bath

Double glazing

Easy access to highway

Easy access to main roads

En suite bathroom

Fitted wardrobes

High ceilings

Investment opportunity

Luxury specifications

Modern design

Near amenities

Panoramic view

Pool view

Pressurized water system

Quiet area

Rental potential

Sea view

Sound insulation

Spacious rooms

Thermal insulation

Veranda

Distances

Amenities

 5 km

Airport

 18 km

Sea

 3.5 km

Public transport

 3 km

Schools

 10 km


Resort

 3 km

Contact us



George Sergiou

 (+357) 94055813

 info@lextrusrealestate.com

