



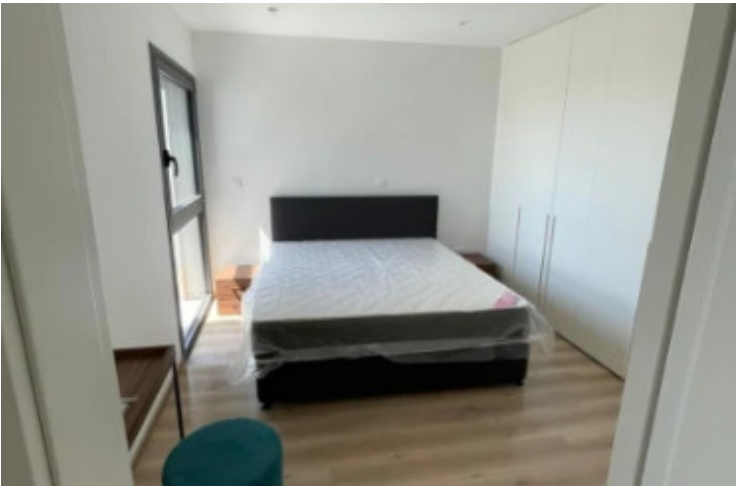
#13524

TWO BEDROOM FULLY FURNISHED APARTMENT IN PANTHEA (13524)

📍 Germasogeia, Limassol




€1,850 /month





Overview

Specifications

Bedrooms		Bathrooms		Covered	
 2		 2		 80 m ²	
Type		Apartment			
Toilets		2			
Status		Key ready			
Furnished		Fully furnished			
Structure		Concrete			
Facade		Concrete			

Description

For rent: This spacious 80 m² apartment in Panthea offers comfortable living with modern style. The property features 2 bedrooms and 2 bathrooms, making it ideal for small families, professionals, or couples. Enjoy an open-plan living and dining area that leads to a well-equipped kitchen. The apartment comes fully furnished, so you can move in and feel at home right away.

Panthea is known for its quiet, residential atmosphere while still providing easy access to everyday conveniences. The area is popular for its schools, parks, and well-kept streets. You will be close to the highway, making daily commutes quick and stress-free. Local shops, supermarkets, restaurants, and other amenities are all nearby, ensuring everything you need is within reach.

The building is modern and well-maintained, with a secure entrance and an elevator for easy access to your floor. This apartment is perfect for anyone looking for comfort and convenience in a sought-after area.



Additional information

Facilities

Aircondition, Split system

Elevator

Heating, Split system

Parking, Covered

Solar water heater

Storage

Features

Bright

Combined kitchen and dining area

Country view

Double glazing

Easy access to highway

Easy access to main roads

Kitchen appliances

Modern design

Near amenities

Near bus route

Quiet area

Veranda

Veranda, front

Contact us



Stefania Spyridou

☎ (+357) 99810880

✉ stephaniaSpyridou@gmail.com

