



#13461

Stunning Corner 6-Bedroom Seaview Gem – Exclusive 3rd Line Location in Chloraka, Paphos (13461)

📍 Chlorakas, Paphos





€1,560,000 +VAT





Overview

Specifications

Bedrooms		Bathrooms		Covered	
 6		 7		 138 m ²	
Type		Detached Villa			
Toilets		7			
Plot		343.1 m ²			
Status		Off plan			
Year of construction		2027			
Furnished		Unfurnished			
Structure		Concrete			
Facade		Concrete			
Energy efficiency rating		 A			

Description

Location: Chloraka, Paphos
Price: €1,560,000 + VAT

Construction to begin 18 months after the sales agreement

Imagine a life where the Mediterranean Sea is your backyard, where luxury, comfort, and sophistication seamlessly blend together. This off-plan, 6-bedroom masterpiece in the exclusive corner plot 3rd line from the beach in Chloraka offers the perfect combination of modern living, coastal beauty, and privacy. With construction starting 18 months after the sales agreement, you have the rare opportunity to secure this stunning property while tailoring it to your personal tastes.

THE PROPERTY:

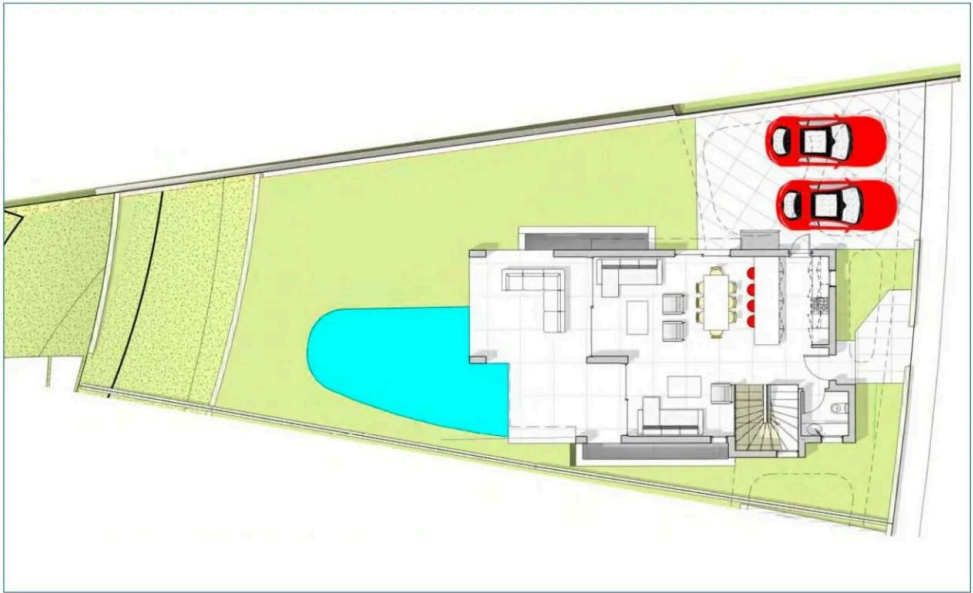
This incredible 4-level villa will boast a total covered area of 271.00 m², with 138.00 m² of covered living space, a 48.97 m² roof terrace, and 34.00 m² of verandas perfect for enjoying the sun or entertaining guests. The lower ground floor will span an impressive 84 m², offering an abundance of space for additional features like a fitness room, home theater, or even a private office — the choice is yours.

This modern villa will include 6 spacious bedrooms, each with its own private bathroom. The additional guest bathroom ensures convenience for visitors. With an open-plan living room, dining area, and state-of-the-art kitchen, you'll experience the pinnacle of coastal living, with breathtaking sea views from virtually every room.

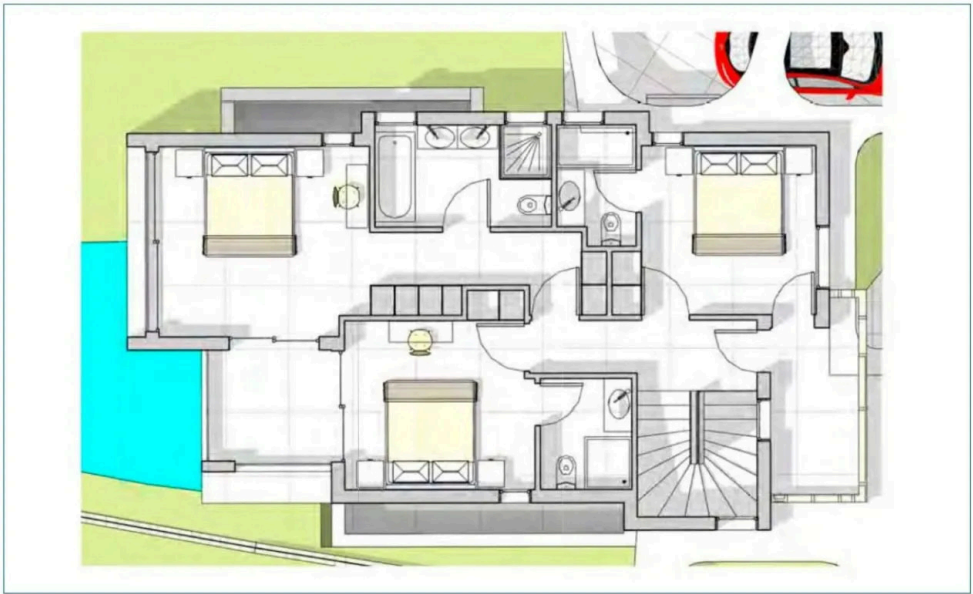


Floor plans

PRELIMINARY GROUND FLOOR



PRELIMINARY FIRST FLOOR



Additional information

Facilities

Aircondition, Central system

Gated complex

Parking, Garage

Solar water heater

Clubhouse

Heating, Underfloor

Pool, Private, infinity

Storage

Elevator

Landscaped garden

Solar photovoltaic panels

Features

Alarm system (provision)

Bathroom underfloor heating

Combined kitchen and dining area

Double glazing

En suite bathroom

Entrance gate

Garden, large

Internal stairs

Luxury specifications

Near bus route

Panoramic view

Pressurized water system

Sea front

Shutters, electric (provision)

Spacious rooms

Veranda

Walking distance to beach

Balcony

Bright

Connected to electric mains

Easy access to main roads

En suite shower

Entrance gate, automated

Granite countertops

Jacuzzi

Modern design

Open plan

Pipe-in-pipe plumbing system

Quiet area

Sea view

Smart home automation (provision)

Suitable for work

Veranda, large

Barbeque

CCTV (provision)

Corner

Electric car charger (provision)

Energy efficient doors/windows

Garden

Guest WC

Laundry room

Near amenities

Openings in opposite sides

Pool view

Roof garden

Shower

Sound insulation

Thermal insulation

Walk-in closet



Distances

Amenities

 800 m

Airport

 19 km

Sea

 10 m

Public transport

 800 m

Schools

 900 m


Resort

 200 m

Contact us



Stefania Spyridou

 (+357) 99810880

 stephaniaSpyridou@gmail.com

