



#13355

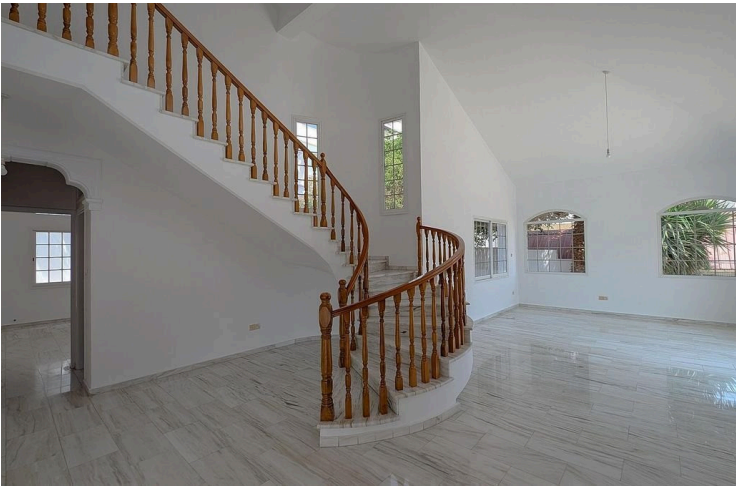
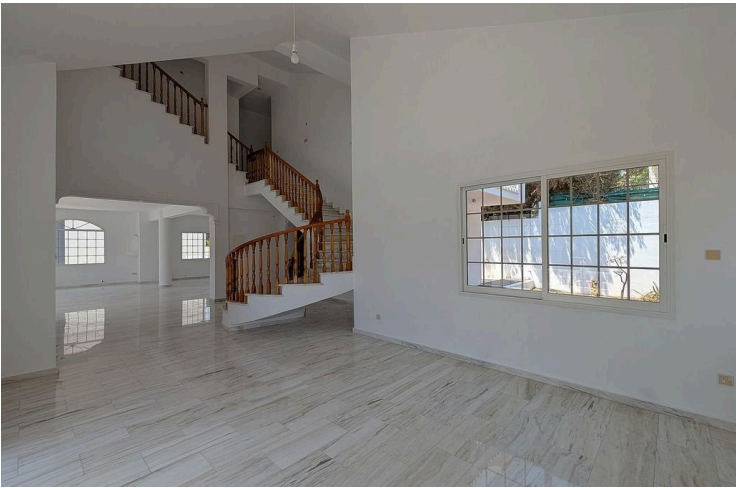
# Four Bedroom Luxury Residence, in Panthea - Mesa Geitonia, Limassol (13355)

📍 Mesa Geitonia, Limassol

€875,000







# Overview

## Specifications

Bedrooms



4

Bathrooms



3

Covered

304 m<sup>2</sup>

Type	<b>Detached Villa</b>
Plot	<b>529 m<sup>2</sup></b>
Status	<b>Resale</b>
Year of construction	<b>1996</b>

Title deed	<b>Yes</b>
Furnished	<b>Unfurnished</b>
Structure	<b>Concrete</b>
Facade	<b>Concrete</b>

## Description

Discover this impressive, detached home, ideally situated in the desirable Panthea quarter of Mesa Geitonia, Limassol. Built in 1996, the property occupies a generous 592sq.m. corner plot with approximately 29 meters of frontage , combining privacy with excellent accessibility.

Property Features:

- Internal Covered Area: Approx. 304sq.m.
- Basement: 260sq.m., including boiler and laundry rooms, and covered parking
- Attic: 24sq.m., featuring a bedroom with en-suite facilities
- Outdoor Verandas: 43sq.m. covered and 101sq.m. uncovered, perfect for relaxing or entertaining

Layout:

Ground Floor:

- Welcoming entrance hall leading to spacious open-plan sitting and living areas
- Formal dining room with a bar
- Fully equipped kitchen with a cozy sitting area and fireplace
- Guest W/C
- Staircases to upper floors and an uncovered veranda

First Floor:



# Additional information

## Facilities

Aircondition, Split system  
Storage

Parking, Covered

Solar water heater

## Features

Attic  
En suite shower  
Indoor fireplace  
Jacuzzi  
Open plan  
Veranda, back

Corner  
Granite countertops  
Internal stairs  
Kitchen appliances  
Shower  
Veranda, front

Double glazing  
Guest WC  
Investment opportunity  
Laundry room  
Veranda  
Veranda, large

## Distances

Amenities



300 m

Airport



50 km

## Contact us



**Stefania Spyridou**

☎ (+357) 99810880

✉ [stephaniaspyridou@gmail.com](mailto:stephaniaspyridou@gmail.com)

