



#13343

?Two Bedroom Apartment With Garden in Zakaki Limassol (13343)

📍 Zakaki, Limassol





€625,000 +VAT





Overview

Specifications

Bedrooms		Bathrooms		Covered	
 2		 2		 89 m ²	
Type	Apartment				
Toilets	2				
Status	Off plan				
Year of construction	2027				
Furnished	Optional furnished				
Structure	Concrete				
Facade	Concrete				
Communal charge frequency	Monthly				
Energy efficiency rating	 A				

Description

€625,000 + VAT | Completion: End of 2027 | Energy Rating: A

Step into a sanctuary designed for those who value more than just square meters. This fourth floor, 2-bedroom, 2-bathroom residence is not simply an apartment—it’s an invitation to live within a sustainable ecosystem of luxury, privacy, and wellness, just minutes from the coast.

? Private, Peaceful, Perfectly Positioned

Tucked amidst expansive gardens and flowing organic pools, this apartment offers a rare sense of seclusion with its own private green space, ideal for morning coffees, sunset yoga, or al fresco dinners. With direct access to landscaped paths and the residence’s serene grounds, you’ll feel immersed in nature every moment you’re home.

? Inside Your Future Home:

Spacious open-plan living with engineered timber flooring and full-height glass doors

Gourmet kitchen with custom cabinetry, premium finishes, and integrated appliances

Two tranquil bedrooms, each designed for restful sleep and optimal light

Spa-quality bathrooms with floor-to-ceiling ceramic tiling and high-end sanitary ware

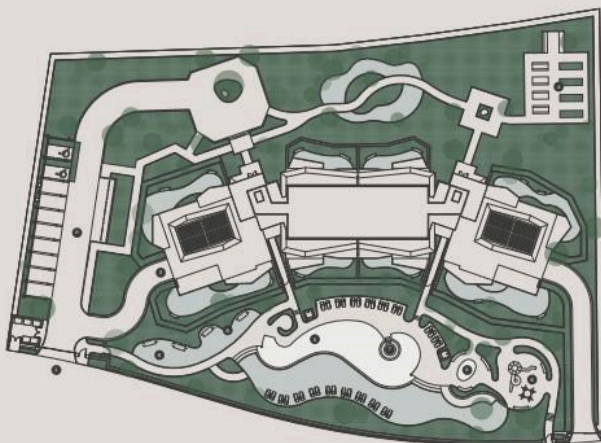


Floor plans

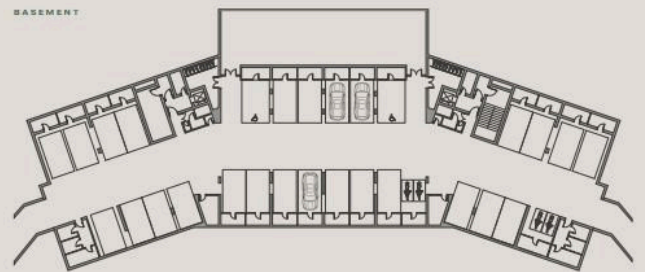
THE MASTERPLAN



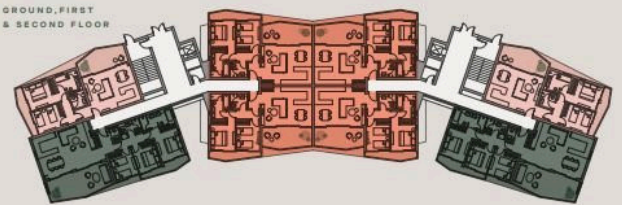
APARTMENTS MASTERPLAN



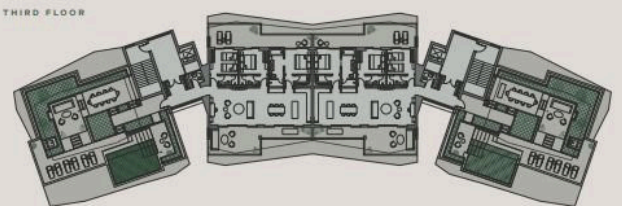
BASEMENT



GROUND, FIRST & SECOND FLOOR



THIRD FLOOR



Additional information

Facilities

Aircondition, Provision

Elevator

Heating, Underfloor

Parking, Underground

Solar photovoltaic panels
(provision)

Storage

Childrens playground

Gated complex

Landscaped garden

Pool, Communal

Solar water heater

Tennis court

Clubhouse

Gym

Outdoor shower

Sauna

Spa

Features

24-hour security

Barbeque

Combined kitchen and dining
area

Easy access to highway

En suite shower

Entrance gate, automated

Floor-to-ceiling windows

Jacuzzi

Modern design

Open plan

Pipe-in-pipe plumbing system

Rental potential

Smart home automation
(provision)

Suitable for work

Alarm system (provision)

Bright

Connected to electric mains

Easy access to main roads

Energy efficient doors/windows

Fire detector

Granite countertops

Lake view

Near amenities

Painted

Pressurized water system

Shower

Sound insulation

Thermal insulation

Balcony

CCTV (provision)

Double glazing

Electric car charger (provision)

Entrance gate

Fireproof entrance doors

Investment opportunity

Luxury specifications

Next to green area

Parquet flooring

Quiet area

Shutters, electric (provision)

Spacious rooms

Veranda



Distances

Amenities

 350 m

Airport

 57 km

Sea

 2 km

Public transport

 1 km

Schools

 3 km

Resort

 0 m

Contact us



Stefania Spyridou

 (+357) 99810880

 stephaniaSpyridou@gmail.com

