



#13071

LUXURIOUS 2 BEDROOM APARTMENT IN NIKOKLAIDI, PAPHOS (13071)

 Nikokleia, Paphos

€520,000 +VAT





Overview

Specifications

Bedrooms		Bathrooms		Covered	
 2		 2		 94.2 m ²	
Type		Apartment			
Toilets		2			
Status		Under construction			
Year of construction		2027			
Furnished		Unfurnished			
Structure		Concrete			
Facade		Concrete			
Energy efficiency rating		 A			

Description

LUXURIOUS 2 BEDROOM APARTMENT IN NIKOKLAIDI, PAPHOS (13071)

- Delivery: January, 2027
- Covered Internal Area: 94.2 m²
- Covered Veranda: 19 m²
- Covered Parking: 12 m²

Step into contemporary comfort with this modern, key-ready apartment located on the first floor of a well-designed six-story building with elevator access in the peaceful village of Nikokleia, Paphos. Offering generous indoor and outdoor space, this apartment is perfect for families, professionals, or anyone seeking a tranquil lifestyle with easy access to the city.

Property Features:
2 spacious bedrooms and 2 elegant bathrooms

94.2 m² of internal living space with a smart, open-plan layout

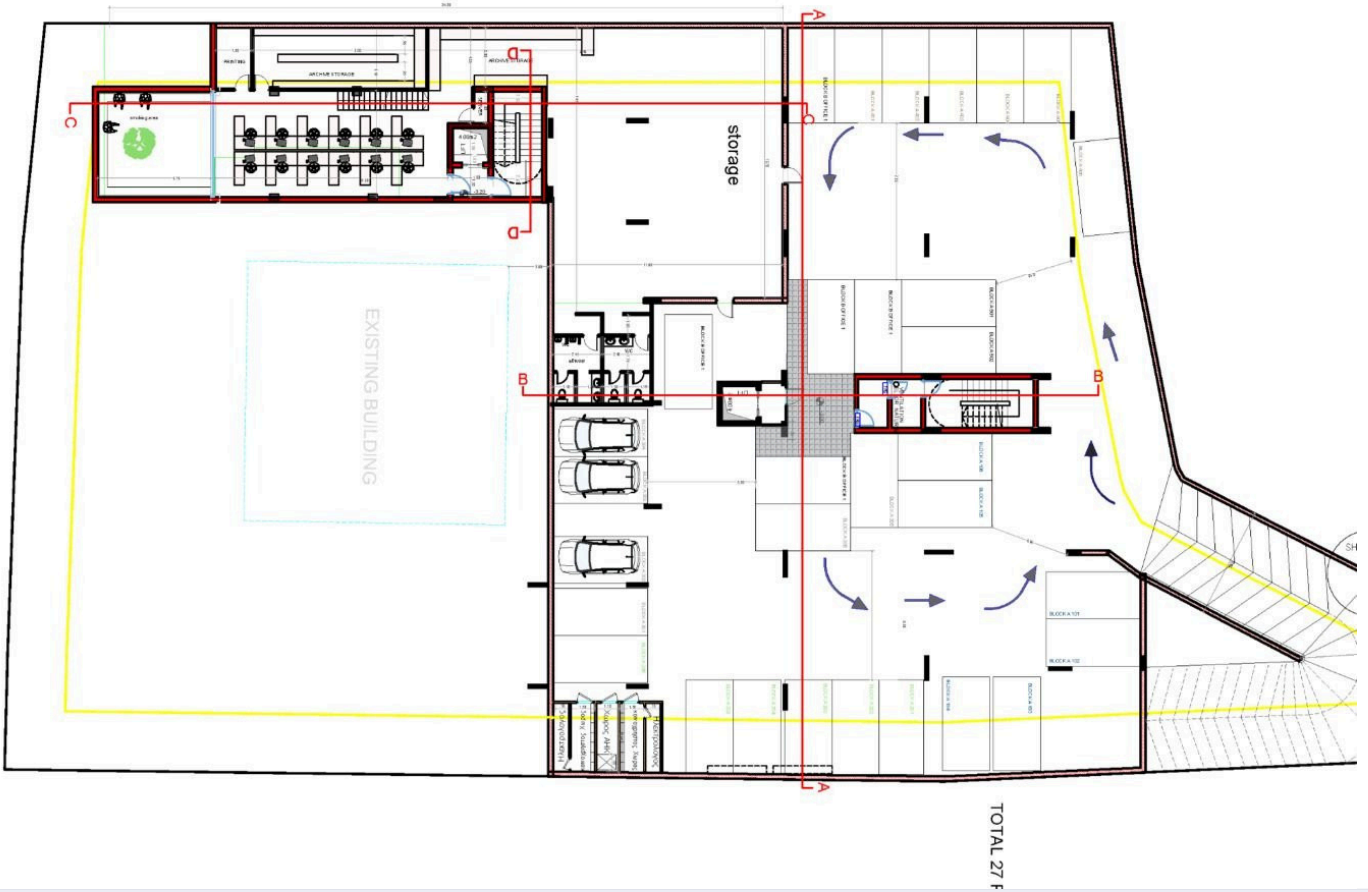
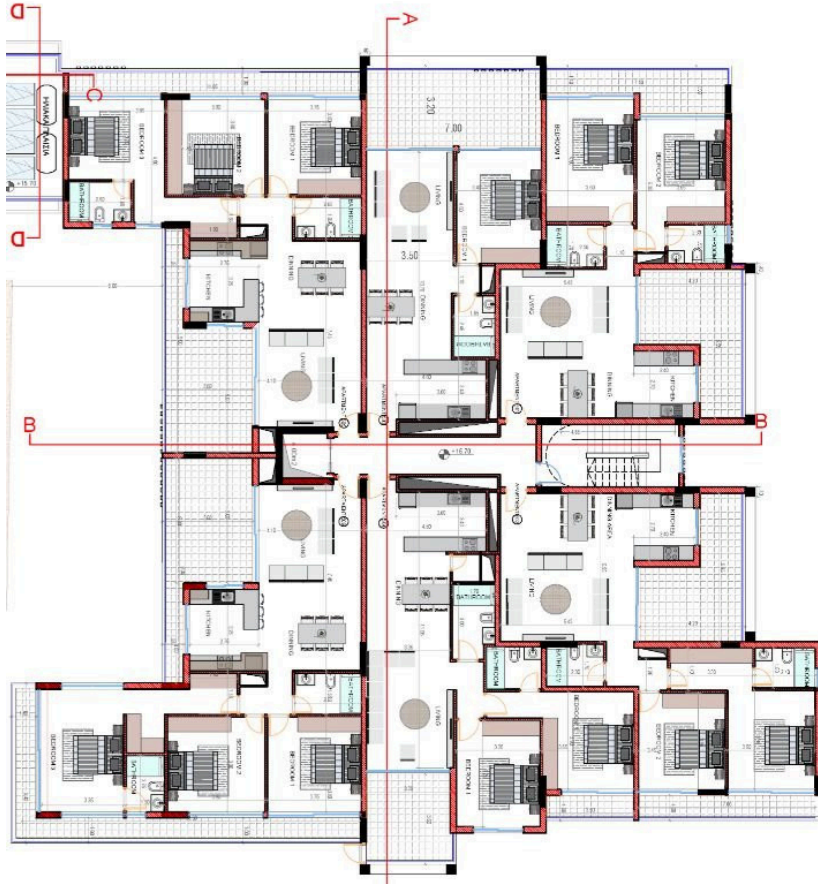
19 m² covered veranda, ideal for al fresco dining or outdoor relaxation

Covered parking space (12 m²) included

Energy Efficiency Class A, ensuring cost-effective and eco-friendly living



Floor plans



Additional information

Facilities

Aircondition, Provision

Elevator

Heating, Underfloor

Parking, Covered

Features

Balcony

Bath

Double glazing

Easy access to highway

Easy access to main roads

Fitted wardrobes

Investment opportunity

Luxury specifications

Modern design

Near amenities

Pressurized water system

Quiet area

Rental potential

Veranda

Distances

Amenities

 **3.2 km**

Airport

 **18.5 km**

Sea

 **3.1 km**

Schools

 **450 m**


Resort

 **2 km**

Contact us



George Sergiou

 (+357) 94055813

 info@lextrusrealestate.com

