



#13014

LUXURIOUS 2 BEDROOM APARTMENT IN KATO PAPHOS, PAPHOS (13014)

 Kato Paphos, Paphos





€380,000 +VAT





Overview

Specifications

Bedrooms		Bathrooms		Covered	
 2		 2		 76.6 m ²	
Type	Apartment	Furnished	Unfurnished		
Showers	1	Structure	Concrete		
Toilets	2	Facade	Concrete		
Status	Off plan	Communal charge frequency	Monthly		
Year of construction	2026	Energy efficiency rating	 A		

Description

LUXURIOUS 2 BEDROOM APARTMENT IN KATO PAPHOS, PAPHOS (13014)

PRICE: 380,000 EURO PLUS VAT

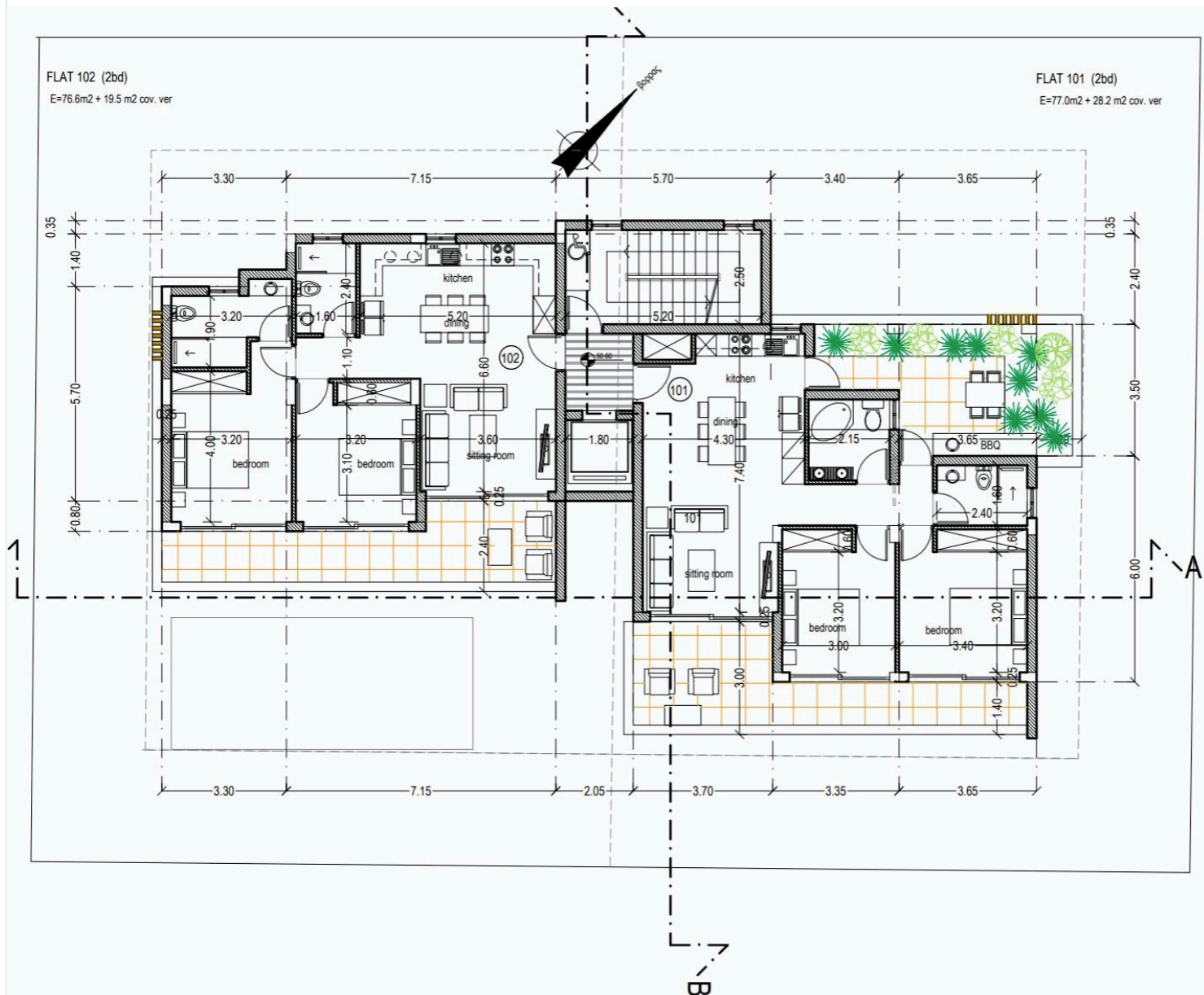
- 2 Bedrooms
- 2 Bathrooms
- Covered Area: 76.6 m2
- Covered Veranda: 19.5 m2
- Communal Pool: 4x8 sqm
- Floor: 1st
- Delivery Date: July 2026

Welcomel, where luxury and sophistication meet in perfect harmony in the peaceful neighborhood of Paphos. This exceptional development offers a selection of meticulously crafted apartments and penthouses, each designed to meet the highest standards of contemporary living. With premium finishes, cutting-edge appliances, and expansive roof terraces that provide breathtaking panoramic views, sets a new benchmark for elegant living.

The project features a carefully curated collection of residences, including four spacious two-bedroom apartments and two exquisite three-bedroom units, one of which is a stunning penthouse. Each home is designed with meticulous attention to detail, ensuring the perfect blend of modern elegance and comfort, with open-plan layouts, high-quality finishes, and private balconies that invite natural light and offer serene views.



Floor plans



Additional information

Facilities

Aircondition, Provision

Heating, Provision

Solar water heater

Elevator

Parking, Covered

Storage

Gated complex

Pool, Communal

Features

Easy access to highway

Laminate flooring

Near amenities

Quiet area

Easy access to main roads

Luxury specifications

Near bus route

Thermal insulation

Fitted wardrobes

Modern design

Open plan

Tile flooring

Distances

Amenities

 450 m

Airport

 7 km

Sea

 1.4 km


Schools

 3.4 km

Contact us



George Sergiou

 (+357) 94055813

 info@lextrusrealestate.com

