



#12961

# Modern 2 Bedroom Maisonette in King of Tombs Area in Paphos (12961)

📍 Tombs Of the Kings, Paphos

€521,000 +VAT





# Overview

## Specifications

Bedrooms



Bathrooms



Covered

**91.59 m<sup>2</sup>**

Type	<b>Maisonette</b>
Toilets	<b>3</b>
Covered veranda	<b>18.21 m<sup>2</sup></b>
Covered parking	<b>11 m<sup>2</sup></b>
Status	<b>Under construction</b>
Year of construction	<b>2026</b>

Furnished	<b>Unfurnished</b>
Structure	<b>Concrete</b>
Facade	<b>Concrete</b>
Communal charge frequency	<b>Monthly</b>
Energy efficiency rating	<b>A</b>

## Description

Modern 2 Bedroom Maisonette in King of Tombs Area in Paphos (12961)

An upcoming luxury development project located in Paphos, Cyprus. The development will be constructed on a 9100-square-meter plot of land and will consist of five individual buildings. The project will feature a total of 72 luxury apartments, all of which will be finished to the highest standard. The block E comprised by four maisonettes.

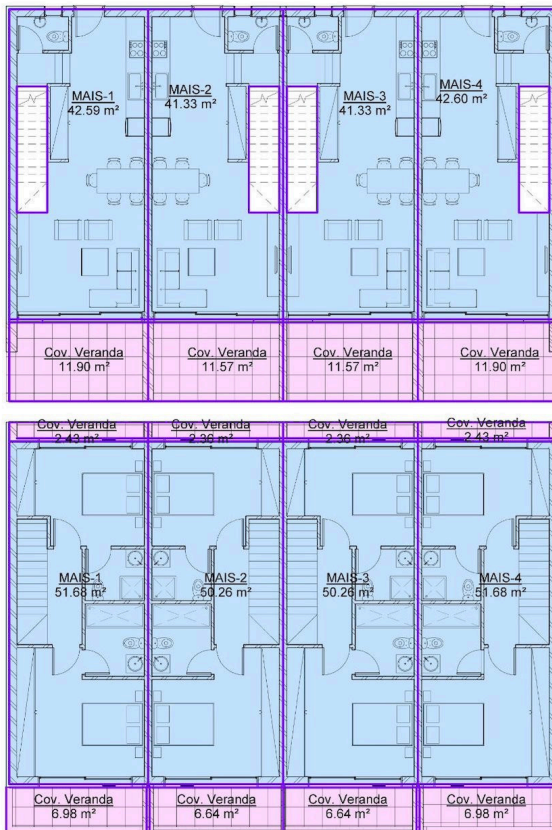
The development will be gated, providing residents with a level of security and exclusivity. Residents will have access to a wide range of luxury amenities including a spa, gym, lobby, concierge services, and 24-hour security. The project offers a variety of options for residents to relax and unwind, including lounging by the large communal pool with a separate pool for kids and a pool bar, as well as lounge areas. The development also includes green spaces with playgrounds for children and public landscaped areas.

Located in a prime location adjacent to the Tombs of the Kings, the King Residences is one of the larger residential projects in Paphos. The area surrounding the development offers easy access to essential amenities such as shopping, dining, and transportation. The location and design of the development have been carefully considered to provide residents with top-notch amenities and modern facilities, ensuring a comfortable and luxurious living experience.

All these features makes this apartment an ideal choice for those seeking high-end living and a solid investment opportunity.



# Floor plans



## ΕΜΒΑΔΑ ΙΣΟΓΕΙΟΥ (GROUND FLOOR AREA)

ΔΟΜΗΣΗ = 165.86sqm

ΚΑΛΥΜΜΕΝΕΣ ΒΕΡΑΝΤΕΣ = 41.75sqm

## BLOCK E AREAS

## ΕΜΒΑΔΑ ΟΡΟΦΟΥ (FIRST FLOOR AREA)

ΔΟΜΗΣΗ = 202sqm

ΚΑΛΥΜΜΕΝΕΣ ΒΕΡΑΝΤΕΣ = 36.82sqm



# Additional information

## Facilities

Aircondition, Provision

Gated complex

Landscaped garden

Sauna

Childrens playground

Gym

Parking, Covered

Solar water heater

Elevator

Heating, Provision

Pool, Communal

Storage

## Features

24-hour security

City view

Cul de sac

Easy access to main roads

Granite countertops

Open plan

Rental potential

Walking distance to beach

Balcony

Combined kitchen and dining area

Double glazing

Entrance gate

Guest WC

Pool bar

Thermal insulation

Barbeque

Connected to electric mains

Easy access to highway

Entrance gate, automated

Investment opportunity

Pressurized water system

Veranda

## Distances

Amenities

 850 m

Airport

 16.4 km

Sea

 1 km

Public transport

 1 km

Schools

 400 m


Resort

 3 km

## Contact us



**Stavroula Michail**

 (+357) 99810880

 stavroulamichail.lextrus@gmail.com

