



#12850

Luxury Villa with 3 Bedrooms in Emba, Paphos (12850)

📍 Lempa, Paphos





€490,000 +VAT





Overview

Specifications

| | | | | | |
|---|--|---|--|--|--|
| Bedrooms | | Bathrooms | | Covered | |
|  3 | |  3 | |  187 m ² | |
| Type | | Detached Villa | | | |
| Toilets | | 4 | | | |
| Plot | | 300 m ² | | | |
| Status | | Off plan | | | |
| Year of construction | | 2026 | | | |
| Furnished | | Unfurnished | | | |
| Structure | | Concrete | | | |
| Facade | | Concrete | | | |
| Energy efficiency rating | |  A | | | |

Description

Luxury Villa with 3 Bedrooms in Emba, Paphos (12850)

For sale off-plan: This beautifully designed detached villa offers 187 m² of covered internal space, perfectly crafted for modern living. Situated on a 300 m² plot, the home features 3 spacious bedrooms and 3 contemporary bathrooms, making it ideal for families or couples who value comfort and functionality.

Enjoy an open-plan layout filled with natural light, seamlessly blending indoor and outdoor living spaces. Large windows frame peaceful views, while energy-efficient design ensures year-round comfort with Energy Efficiency Class A, underfloor heating, and thoughtfully selected modern finishes.

Property Specifications:
Covered Internal Area: 187 m²

Uncovered Verandas: 33 m²

Plot Area: 300 m²

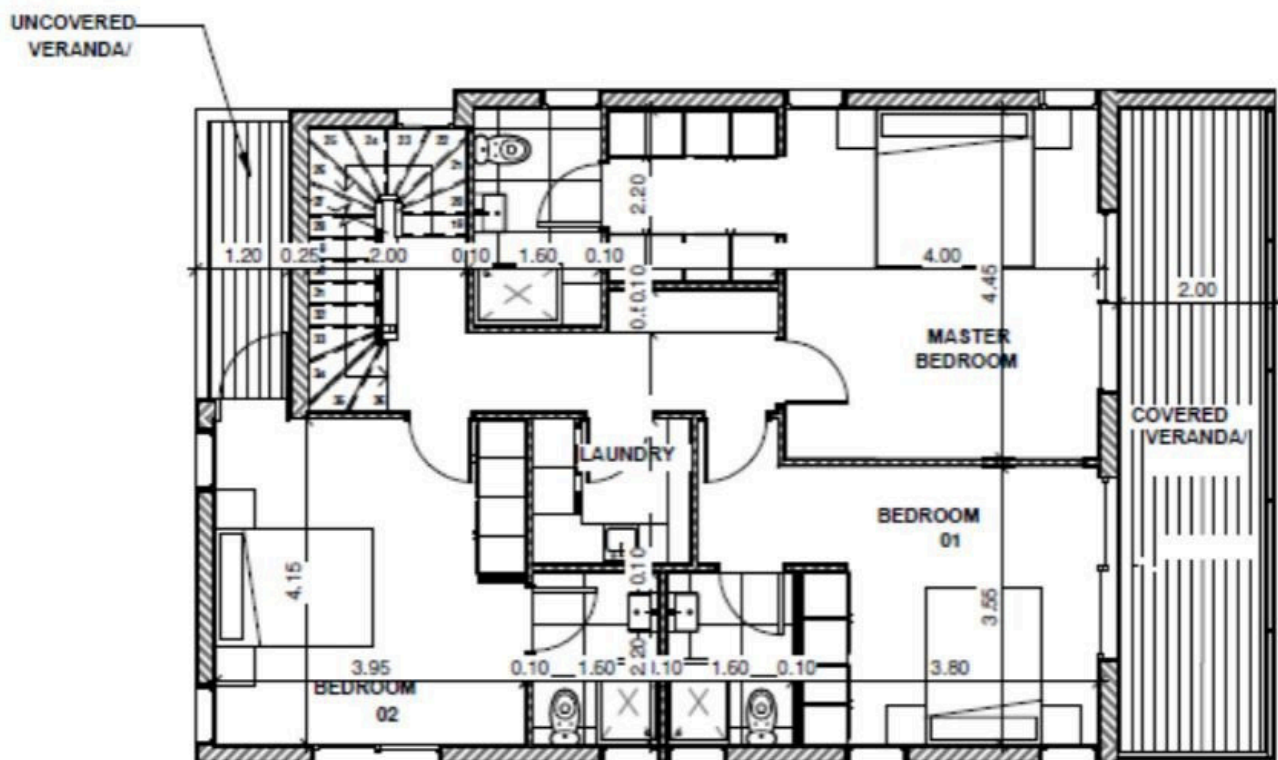
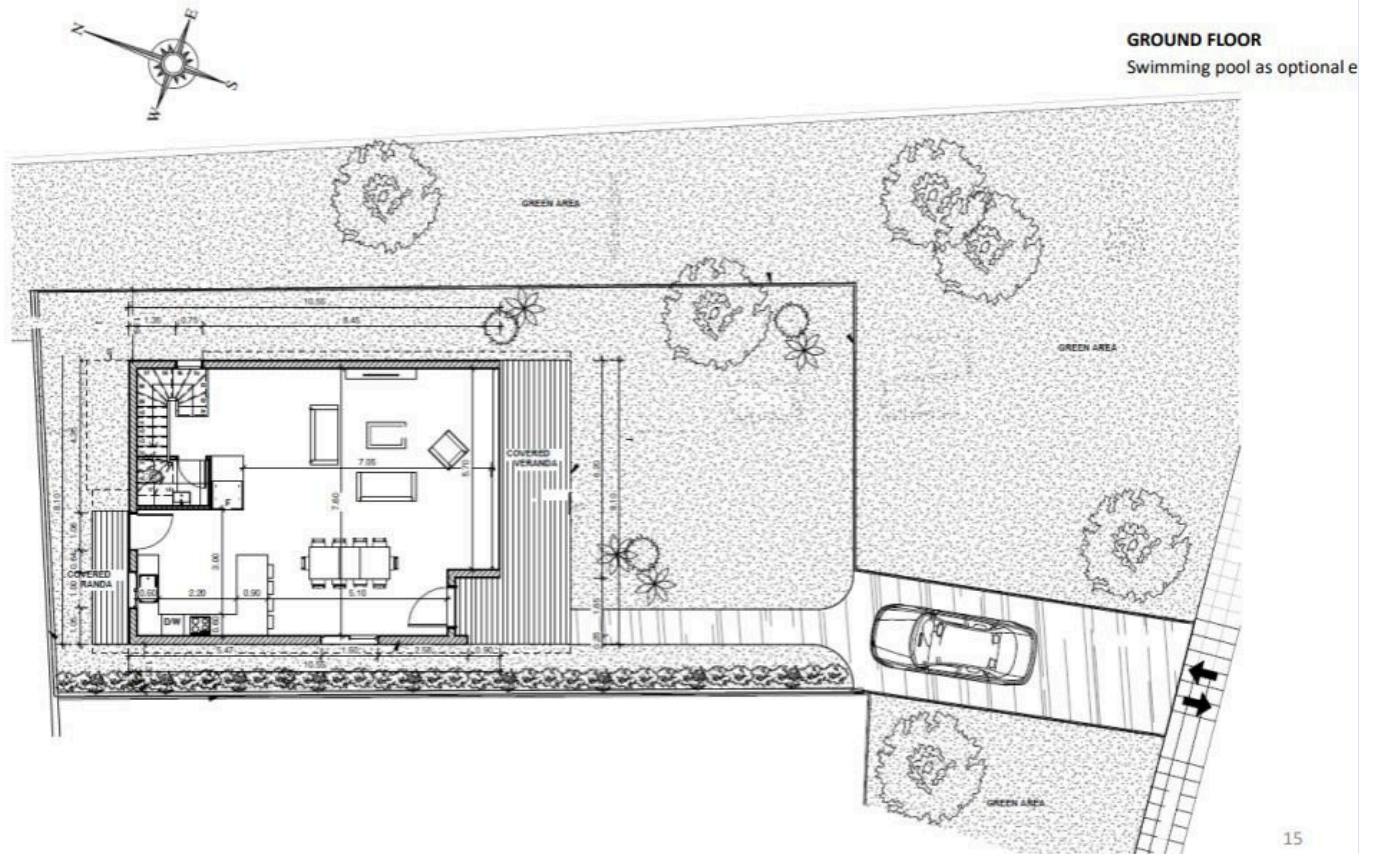
Bedrooms: 3 bright and spacious bedrooms

Bathrooms: 3 modern bathrooms

Energy Efficiency: Class A



Floor plans



Additional information

Facilities

Aircondition, Provision

Heating, Underfloor

Parking, Uncovered

Solar photovoltaic panels
(provision)

Storage

Features

Balcony

Barbeque

Bath

Central TV system

Double glazing

Easy access to highway

Easy access to main roads

Electric car charger (provision)

Garden

Guest WC

Investment opportunity

Luxury specifications

Modern design

Pressurized water system

Quiet area

Rental potential

Roof garden

Shutters, electric (provision)

Thermal insulation

Veranda

Walking distance to beach

Distances

Amenities

 850 m

Airport

 20.7 km

Sea

 3.2 km

Schools

 100 m


Resort

 1.1 km

Contact us



George Sergiou

 (+357) 94055813

 info@lextrusrealestate.com

