



#12829

Two Bedroom Apartment in Panthea Limassol (12829)

 Panthea, Limassol





€350,000 +VAT





Overview

Specifications

Bedrooms		Bathrooms		Covered	
 2		 2		 80.12 m ²	
Type	Apartment				
Toilets	2				
Status	Under construction				
Year of construction	2026				
Furnished	Unfurnished				
Structure	Concrete				
Facade	Concrete				
Communal charge frequency	Monthly				
Energy efficiency rating	 A				

Description

Located in Limassol (Panthea-Grammar School), the project is under construction (structural frame stage) and its expected completion date is Q4 of 2026 .

Apartment Details:

*Internal Covered Area:80.12sqm

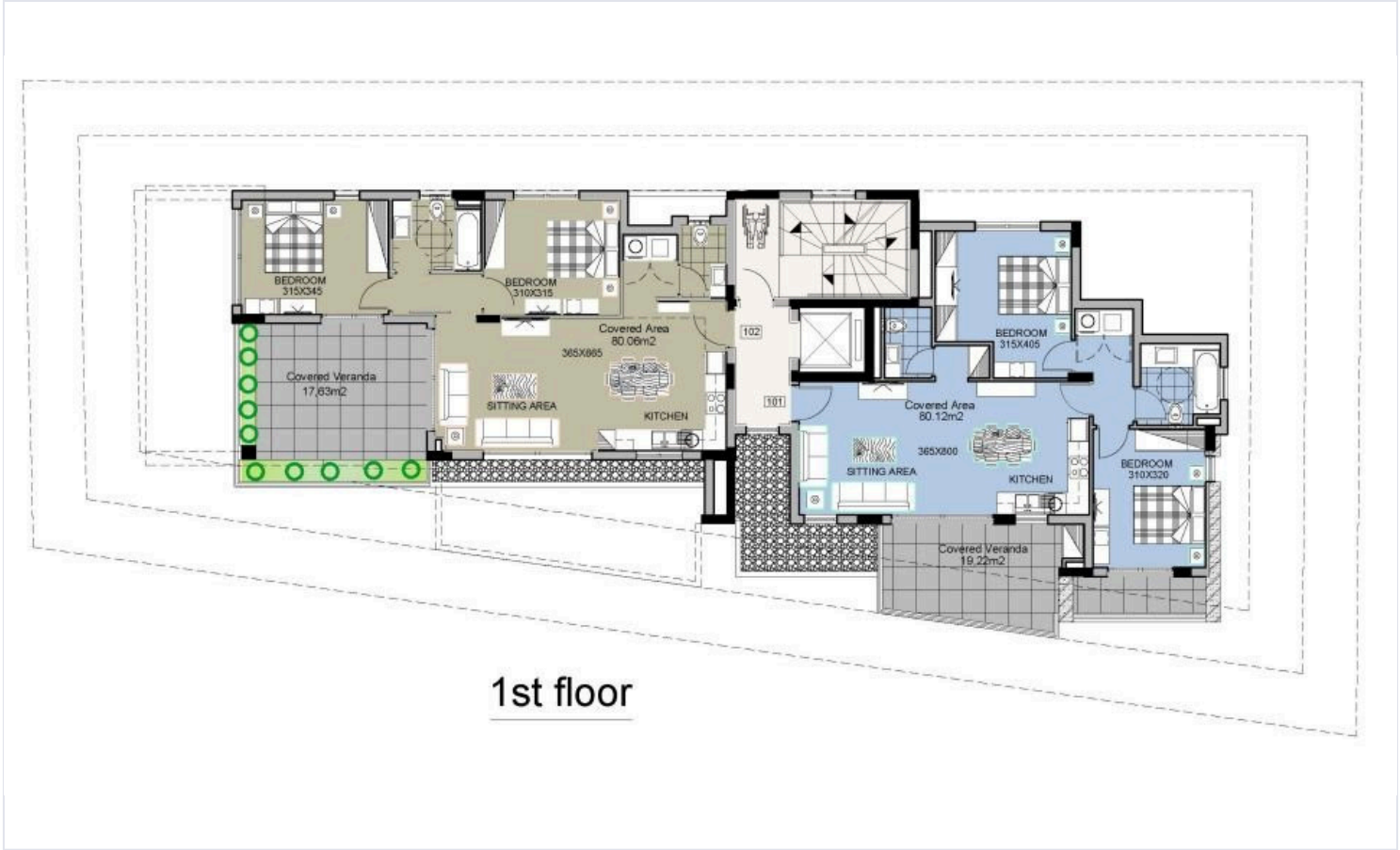
*Covered Veranda:20.13sqm

*Storage:3.63sqm

*Price: €350,000 +VAT



Floor plans



Additional information

Facilities

Aircondition, Provision

Parking, Covered

Storage

Elevator

Solar photovoltaic panels
(provision)

Heating, Provision

Solar water heater

Features

Balcony

Connected to electric mains

Granite countertops

Modern design

Pressurized water system

Bright

Double glazing

Investment opportunity

Open plan

Thermal insulation

Combined kitchen and dining area

Energy efficient doors/windows

Luxury specifications

Pipe-in-pipe plumbing system

Veranda

Distances

Amenities

 200 m

Airport

 50 km

Sea

 4.8 km

Public transport

 400 m

Schools

 350 m


Resort

 5 km

Contact us



Stefania Spyridou

 (+357) 99810880

 stephaniaSpyridou@gmail.com

