

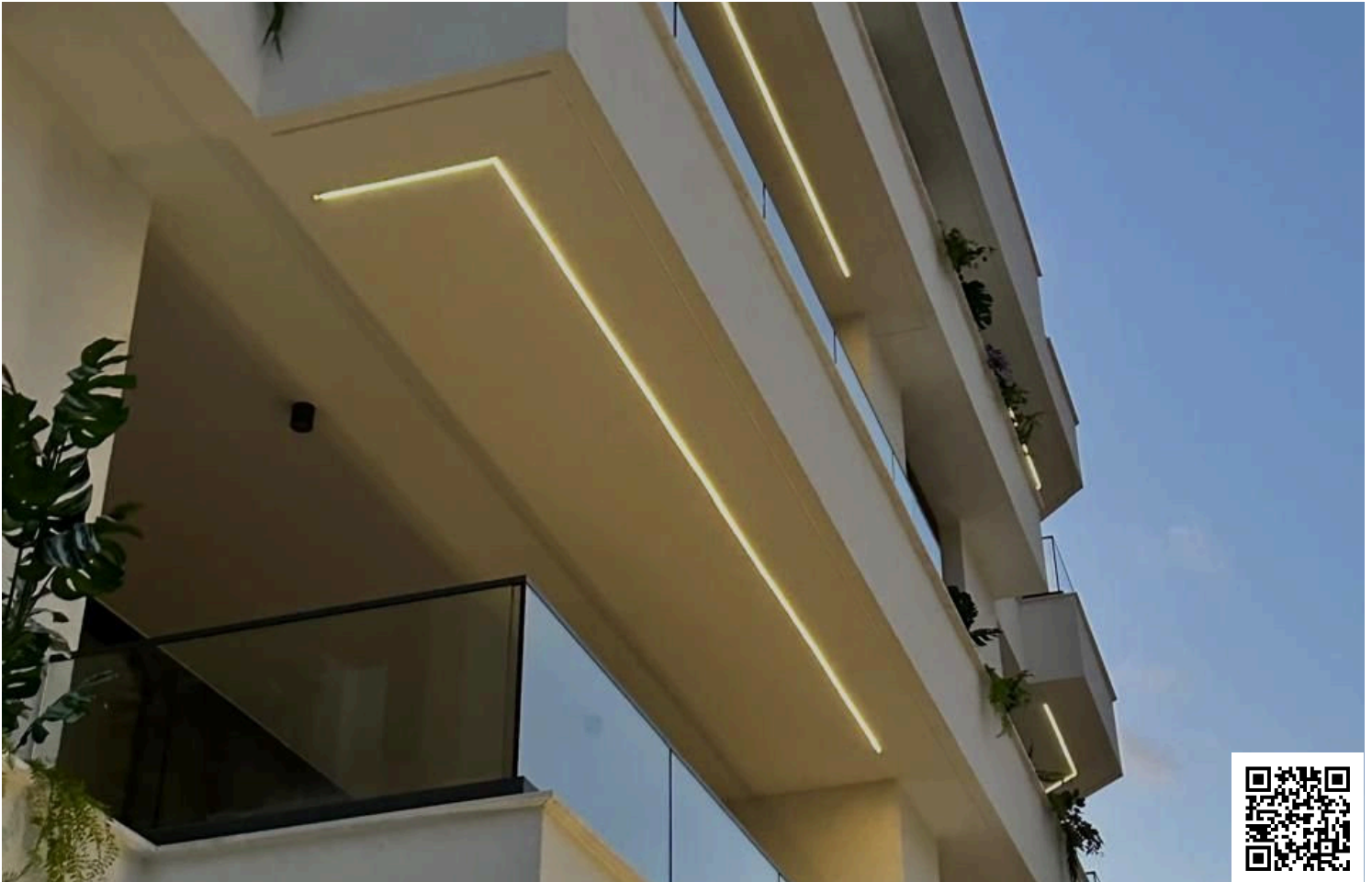


#12805

Modern 2 Bedroom Apartment For Sale in Larnaca, near the mall (12805)

📍 New Mall Area, Larnaca





€288,000 +VAT





Overview

Specifications

Bedrooms	Bathrooms	Covered	
 2	 2	 90 m ²	
Type	Apartment	Furnished	Unfurnished
Status	Key ready	Energy efficiency rating	 A+
Year of construction	2025		

Description

For sale: a key ready, modern apartment with a total internal space of 90 m² and covered verandas 21 sq.m.. Situated on the second floor of a well-maintained three-story building with elevator access, this property offers both convenience and style. The layout features two spacious bedrooms and two fully equipped bathrooms, designed to maximize comfort and privacy.

This apartment is equipped with an A+ energy efficiency rating and a central air conditioning system, helping you stay comfortable throughout the year while keeping energy costs low. The property is unfurnished, allowing you to design and furnish your new home to your taste.

Located in the vibrant New Mall Area, this apartment provides easy access to shops, restaurants, cafes, and public transport. The neighborhood is well-known for its modern infrastructure, lively atmosphere, and excellent connectivity, making it a popular choice for professionals and families who value both convenience and an urban lifestyle.

If you are looking for a contemporary home in a prime location, contact Lextrus Real Estate for more information or to arrange a viewing.



Floor plans

SECOND FLOOR PLAN

PLOT 237

2 BEDROOMS
2 BATHROOMS
90 M² INTERNAL AREA
21 M² BALCONIES
3 M² STORAGE

202

2 BEDROOM



Additional information

Facilities

Aircondition, Split system

Elevator

Parking, Covered

Features

Balcony, front

Heart of city center

Modern design

Near amenities

Rental potential

Spacious rooms

Distances

Amenities

 200 m

Airport

 8 km

Sea

 2 km


Schools

 500 m

Contact us



Soteris Artikoglou

 (+357) 99163778

 artsotiris@gmail.com

