



#12714

# Modern Villa with Sea View in Kissonerga, Paphos (12714)

 Kissonerga, Paphos

**€710,000** +VAT











# Overview

## Specifications

Bedrooms		Bathrooms		Covered	
 3		 2		 145 m <sup>2</sup>	
Type		Detached Villa			
Toilets		4			
Plot		222 m <sup>2</sup>			
Status		Key ready			
Year of construction		2024			
Furnished		Unfurnished			
Structure		Concrete			
Facade		Concrete			
Energy efficiency rating		 A			

## Description

Modern Villa with Sea View in Kissonerga, Paphos (12714)

Covered Area: 145 m<sup>2</sup> | Covered Veranda: 32 m<sup>2</sup> | Roof Garden: 46 m<sup>2</sup> | Plot: 222 m<sup>2</sup>  
Completion Year: 2024 | Energy Efficiency: Class A

This beautifully designed key-ready semi-detached villa in the sought-after area of Kissonerga offers 145 m<sup>2</sup> of elegant internal living space, combining high-quality finishes with modern comfort. Thoughtfully laid out across two levels, the home features three spacious bedrooms, two stylish bathrooms, and expansive open-plan living areas filled with natural light.

Enjoy stunning mountain and sea views from your private swimming pool or relax on the 46 m<sup>2</sup> roof garden, ideal for entertaining or quiet sunsets. The property also includes a 32 m<sup>2</sup> covered veranda, perfect for outdoor dining or lounging.

Key Features:

Private swimming pool

Underfloor heating throughout

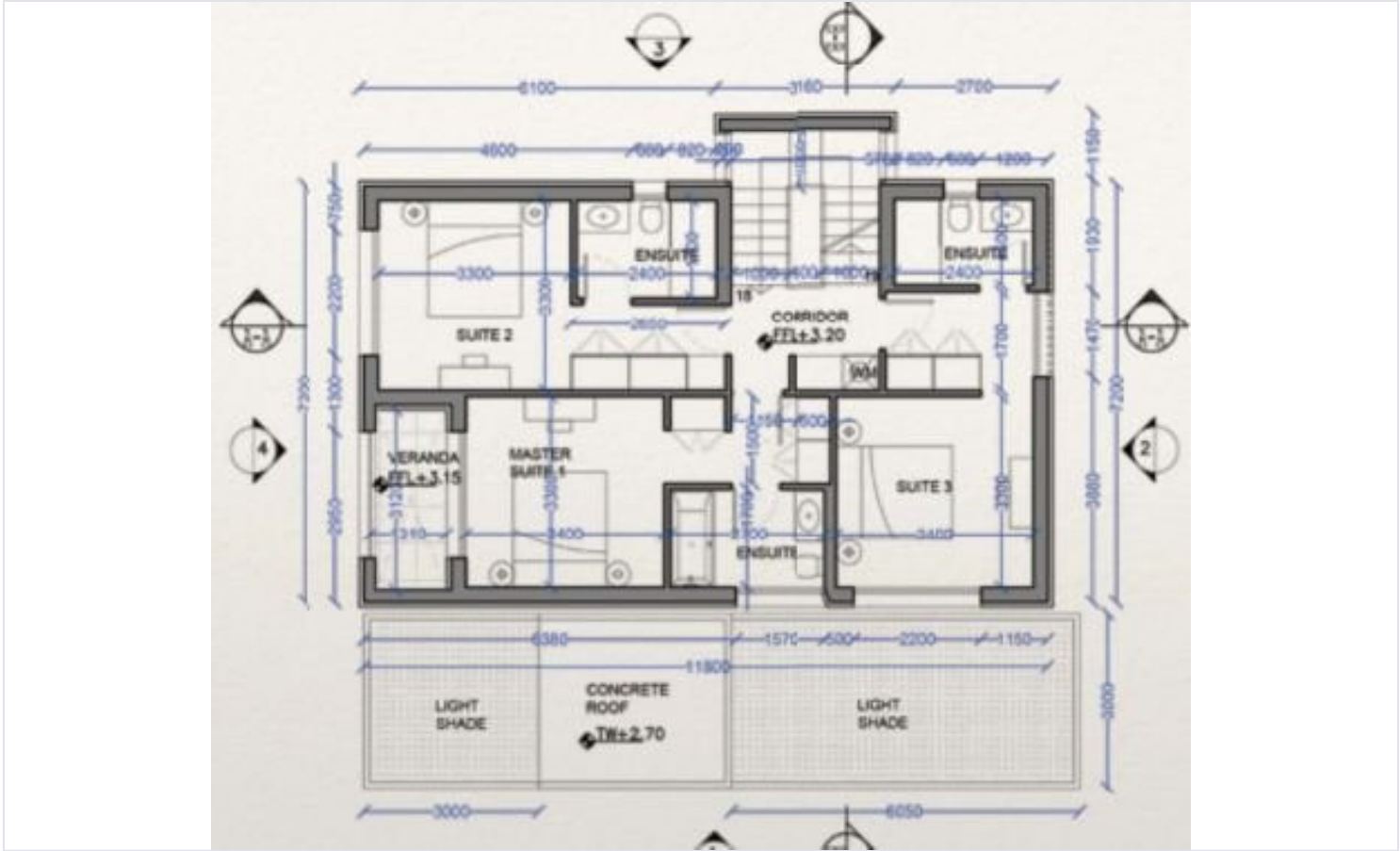
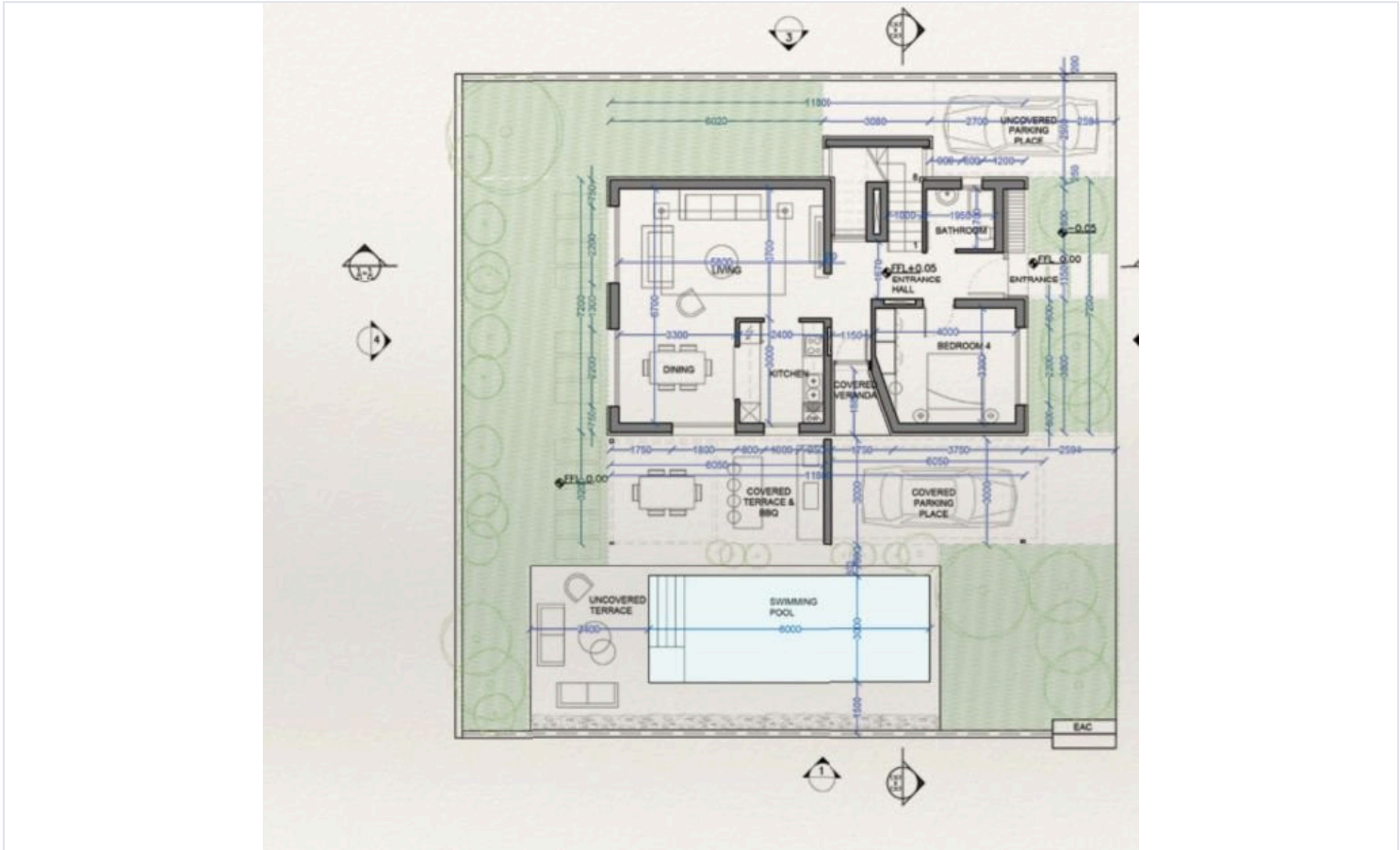
Energy Efficiency Class A

Roof garden with panoramic views





# Floor plans



# Additional information

## Facilities

Aircondition, Split system

Heating, Underfloor

Parking, Uncovered

Pool, Private

## Features

Balcony

Bath

Double glazing

Easy access to highway

Easy access to main roads

Garden

Guest WC

Investment opportunity

Luxury specifications

Modern design

Mountain view

Near amenities

Near bus route

Pool view

Pressurized water system

Quiet area

Roof garden

Sea view

Walking distance to beach

## Distances

Amenities



1 km

Airport



25 km

Sea



160 m

Schools



1.7 km

Resort



160 m

## Contact us



**George Sergiou**

📞 (+357) 94055813

📧 [info@lextrusrealestate.com](mailto:info@lextrusrealestate.com)

