



#12686

Elegant 1-Bedroom Apartment in Prime Germasogia Touristic Area (Dasoudi), Limassol (12686)

📍 Germasogeia Tourist Area, Limassol





€395,000 +VAT





Overview

Specifications

Bedrooms		Bathrooms		Covered	
 1		 1		 52 m ²	
Type	Apartment				
Toilets	1				
Status	Under construction				
Year of construction	2025				
Furnished	Optional furnished				
Structure	Concrete				
Facade	Concrete				
Communal charge frequency	Monthly				
Energy efficiency rating	 A				

Description

Elegant 1-Bedroom Apartment in Prime Germasogia Touristic Area (Dasoudi), Limassol (12686)

Price: €395,000 + VAT

Delivery Date: September 2025

Discover modern living in this stylish 1-bedroom apartment currently under construction in the highly sought-after area of Germasogeia, Limassol. Situated on the second floor of a sleek three-story building with elevator access, this home offers both comfort and convenience in a vibrant urban setting.

Property Features:

Internal Covered Area: 52 m²

Covered Veranda: 10 m²

Bedrooms: 1 spacious bedroom

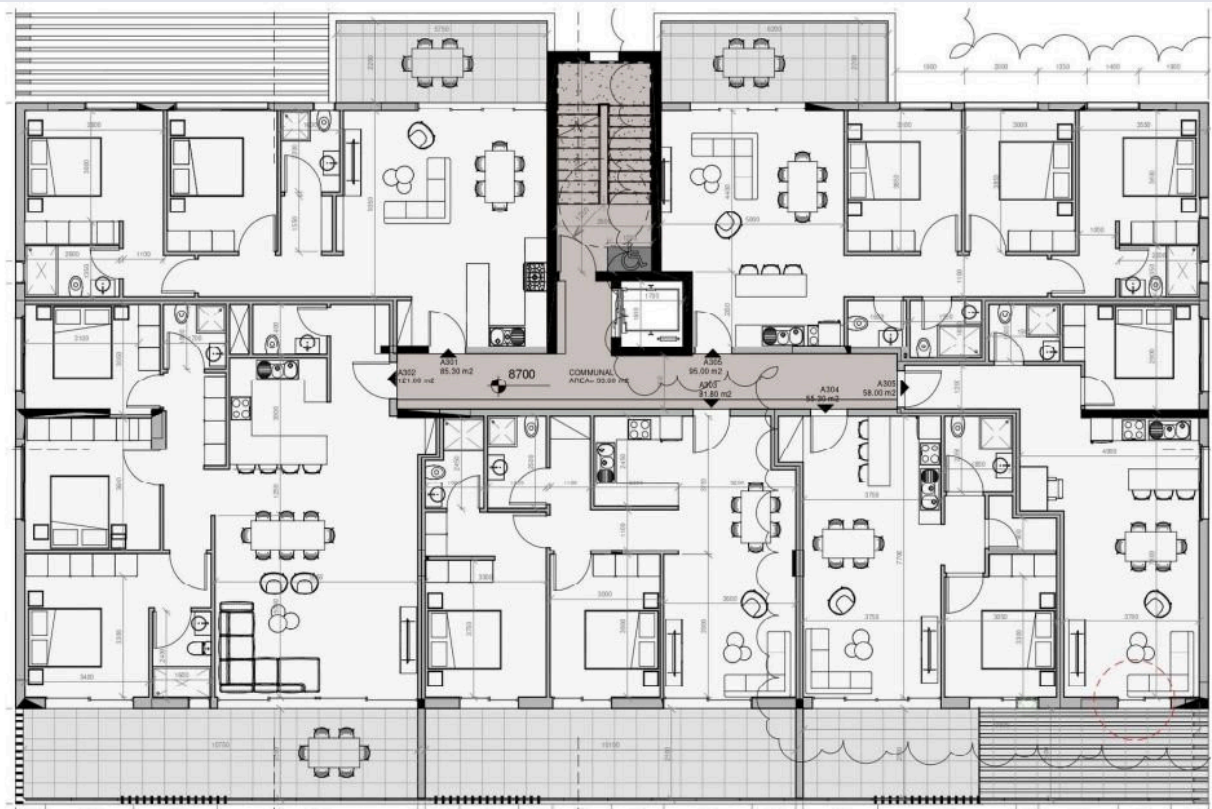
Bathrooms: 1 modern bathroom with overhead shower

Energy Efficiency: Class A

High-Quality Finishes throughout



Floor plans



Additional information

Facilities

Aircondition, Provision

Parking, Covered

Storage

Elevator

Pool, Communal

Heating, Provision

Solar water heater

Features

Balcony

Energy efficient doors/windows

Open plan

Bath

Granite countertops

Thermal insulation

Double glazing

Investment opportunity

Veranda

Distances

Amenities



200 m

Sea



800 m

Public transport



100 m

Schools




500 m

Contact us



George Sergiou

 (+357) 94055813

 info@lextrusrealestate.com

