

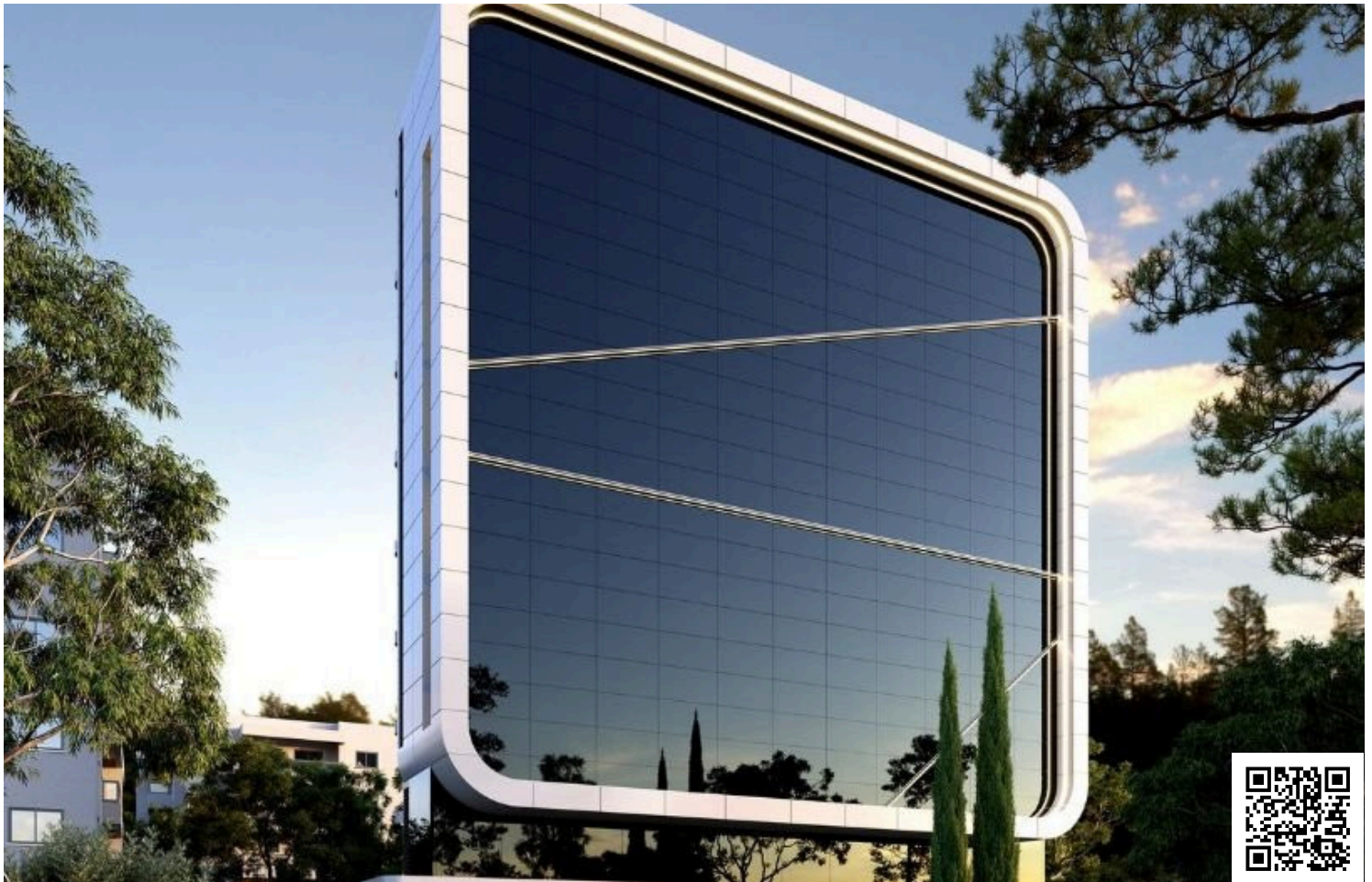


#12634

Prime Commercial Shop in Mesa Geitonia (12540)

📍 Mesa Geitonia, Limassol

€1,520,000 +VAT





Overview

Specifications

Covered

 242 m²

Type	Shop	Furnished	Unfurnished
Toilets	1	Structure	Concrete
Status	Under construction	Facade	Concrete
Year of construction	2025	Energy efficiency rating	 A

Description

Prime Commercial Shop in Mesa Geitonia (12540)

Positioned in the heart of one of Limassol’s most dynamic commercial zones, this modern retail space offers 242 m² of total internal area across two levels—ground floor and basement—connected by a convenient private elevator.

Scheduled for completion in 2025, the property has been thoughtfully designed with Energy Efficiency Class A, ensuring reduced operational costs and long-term sustainability. Its open layout provides the flexibility to tailor the interior to your brand or operational requirements, whether for a retail outlet, showroom, or client-facing business.

Key Features:

Total area: 242 m² (ground floor + basement)

Elevator access between floors

Unfurnished—ready for full customization

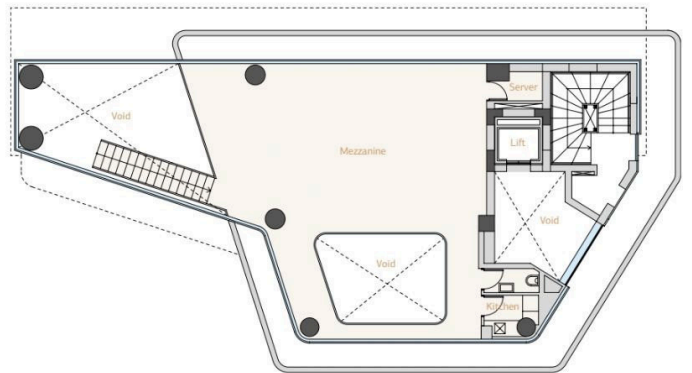
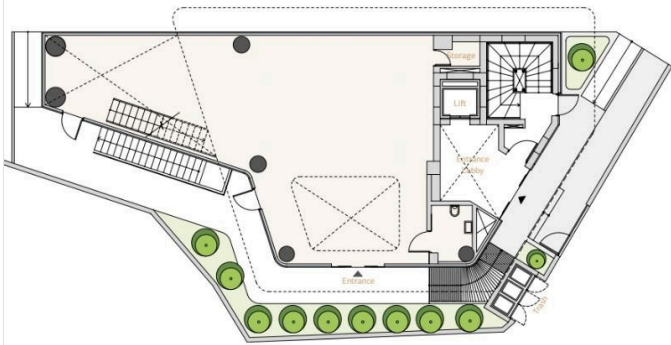
Energy-efficient construction (Class A)

Modern architectural design

Completion date: September 2025



Floor plans



Additional information

Facilities

Elevator

Parking, Covered

Solar photovoltaic panels (provision)

Features

24-hour security

Alarm system (provision)

CCTV (provision)

Double glazing

Earthquake-resistant structure

Easy access to highway

Easy access to main roads

Internet

Kitchenette

Luxury specifications

Meeting room

Near amenities

Near bus route

Near public transport

Reception

Roof garden

Secure door

Server room

Sound insulation

Distances

Amenities



100 m

Airport



60 km

Sea



3 km

Public transport



100 m

Schools



100 m

Resort



1 km

Contact us



George Sergiou

📞 (+357) 94055813

✉️ info@lextrusrealestate.com

