



#12538

2 Bedroom Apartment in Gated Complex in Tersefanou , Larnaca (12538)

📍 Tersefanou, Larnaca





€120,000





Overview

Specifications

Bedrooms		Bathrooms		Covered	
 2		 1		 79 m ²	
Type		Apartment			
Toilets		1			
Status		Resale			
Year of construction		2010			
Title deed		No			
Furnished		Unfurnished			
Structure		Concrete			
Facade		Concrete			
Communal charge		€80			
Communal charge frequency		Monthly			
Energy efficiency rating		 B			

Description

A captivating residential haven on the outskirts of Tersefanou village. A delicate balance between the serenity of village life and the vibrant energy of the nearby city of Larnaca. A mere 15-minute drive from Larnaca airport, the complex effortlessly bridges the gap between traditional Cyprus while staying effortlessly connected to the pulse of urban living.

Tersefanou known for its traditional charm, friendly community, and scenic landscape. The area offers easy access amenities, to the highway, making travel to nearby towns and the coastline fast and convenient.

Tucked away within a secure, gated complex, our collection of 35 residences redefines the concept of neighbourhood.

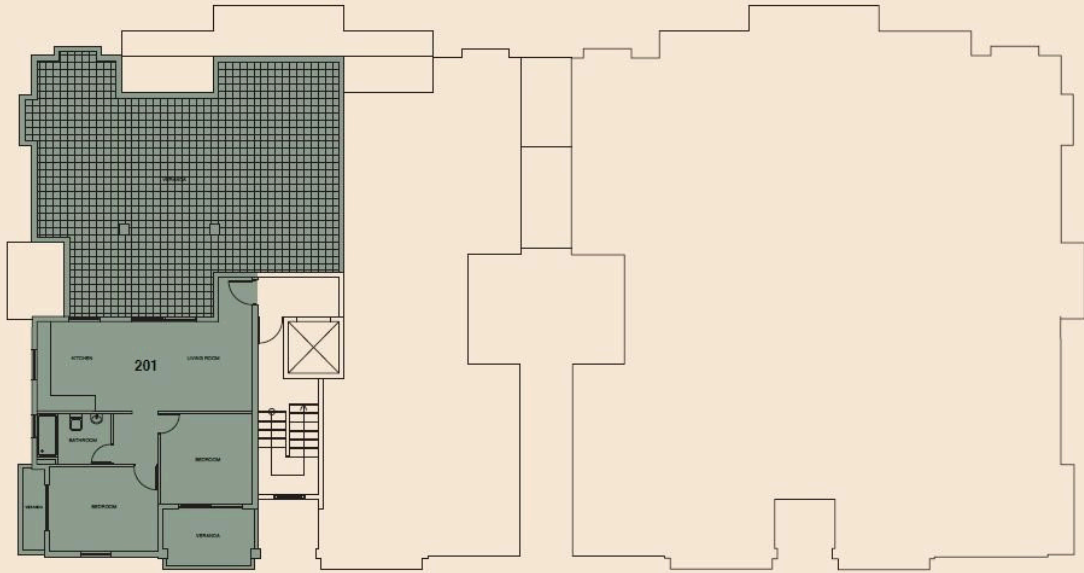
Here, residents are invited to escape the hustle and bustle of everyday life around the communal swimming pool, basketball court and lush garden setting.

For sale 2 Bedroom apartment on the second floor, offering 79 m² of internal space. It has a Covered veranda of 12 m², uncovered veranda of 108 m². This comfortable resale unit was built in 2010 and features a practical open-plan living and sleeping area, along with a modern bathroom. Large windows fill the apartment with natural light and present pleasant views of the surrounding countryside.

This property is a great option for first-time buyers, holidaymakers, or investors seeking rental potential. There is a management committee.



Floor plans



Additional information

Facilities

Aircondition, Split system

Heating, Split system

Solar water heater

Elevator

Parking, Uncovered

Gated complex

Pool, Communal

Features

Ceramic tiles

Country view

Easy access to main roads

Investment opportunity

Rental potential

Veranda

Combined kitchen and dining area

Courtyard

Entrance gate

Open plan

Shower

Village view

Connected to electric mains

Easy access to highway

Entrance gate, automated

Quiet area

Tile flooring

Distances

Amenities

 700 m

Airport

 14.5 km

Sea

 6.5 km

Public transport

 750 m


Schools

 750 m

Contact us



Eleni Skalkou

 (+357) 94599684

 eleniskalkou@gmail.com

