



#12533

Modern Three Bedroom Penthouse Apartment in Germasoyia touristic area, Limassol (12533)

📍 Germasogeia, Limassol


€1,320,000 +VAT





Overview

Specifications

Bedrooms		Bathrooms		Covered	
 3		 2		 121.8 m ²	
Type		Apartment			
Toilets		3			
Status		Under construction			
Year of construction		2026			
Furnished		Unfurnished			
Structure		Concrete			
Facade		Concrete			
Energy efficiency rating		 A			

Description

Modern Three Bedroom Penthouse Apartment in Germasoyia touristic area, Limassol (12533)

For sale: a contemporary off-plan apartment, currently under construction in a well-connected residential area. Situated on the first floor of a modern three-story building with elevator access, this thoughtfully designed home features a covered internal area of 121.8 m², providing a spacious and inviting living space ideal for individuals or couples.

Property Specifications:
Covered Internal Area: 121.8 m²

Covered Veranda: 39.6 m²

Uncovered Veranda: 49.4 m²

Roof Garden: 40.9 m²

Bedrooms: 3 spacious bedrooms

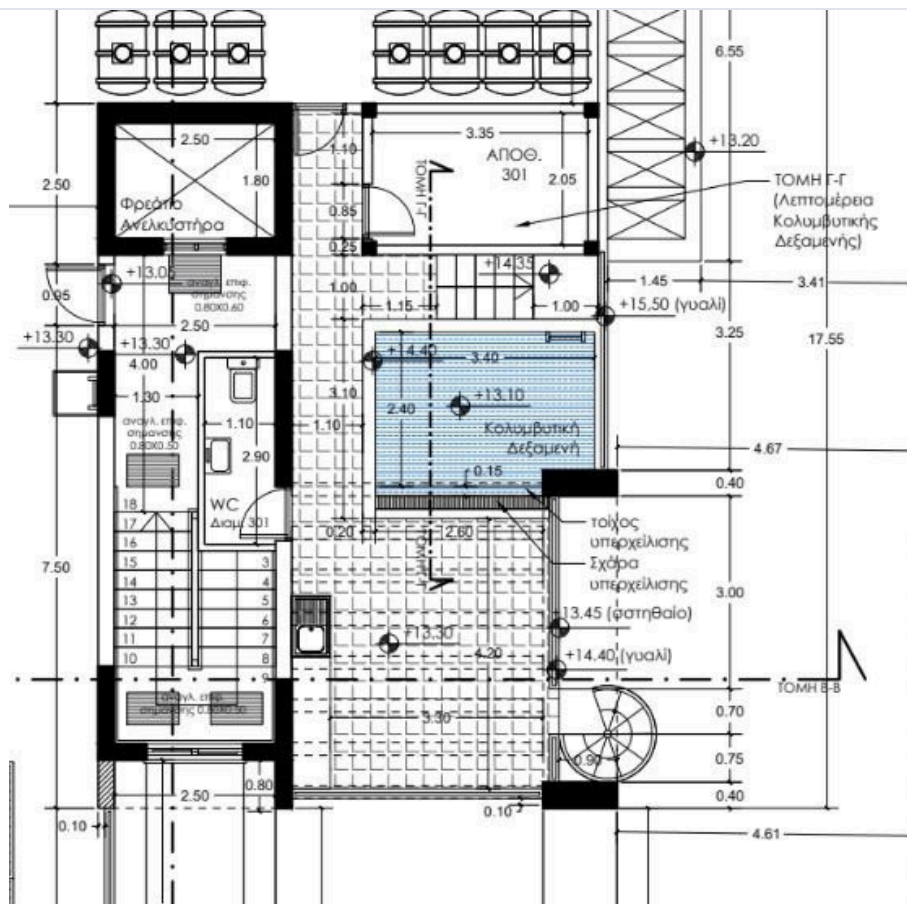
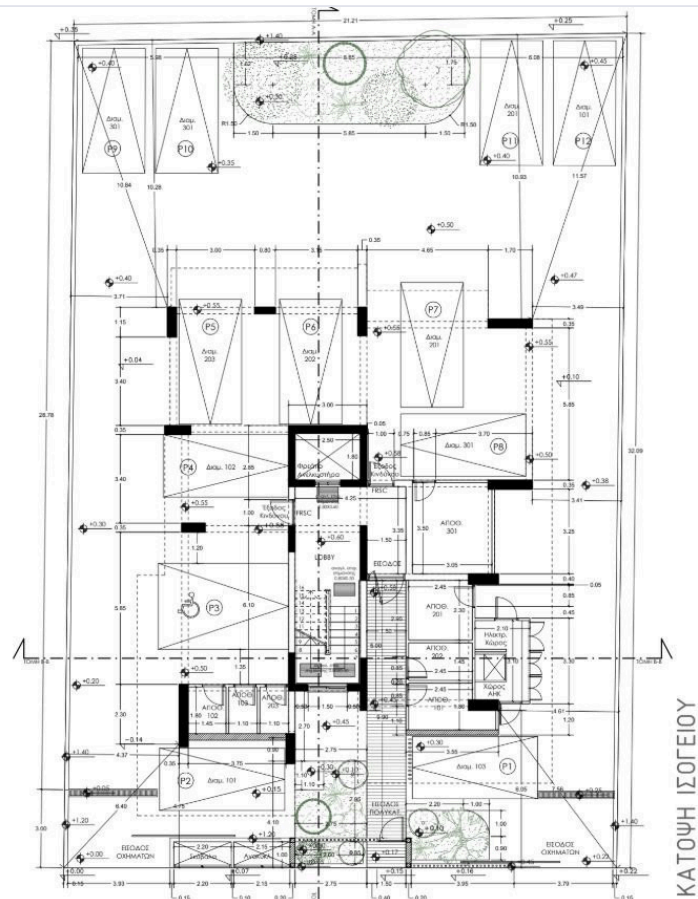
Bathrooms: 2 sleek bathrooms

Energy Efficiency: Class A

Delivery Date: June 1, 2026



Floor plans



Additional information

Facilities

Aircondition, Provision

Pool, Private, infinity

Elevator

Solar photovoltaic panels
(provision)

Parking, Uncovered

Storage

Features

24-hour security

CCTV (provision)

Easy access to main roads

Guest WC

Near amenities

Pressurized water system

Smart home automation
(provision)

Balcony

Double glazing

Entrance gate

Investment opportunity

Near bus route

Roof garden

Walking distance to beach

Bath

Easy access to highway

Fire detector

Modern design

Parquet flooring

Satellite TV

Distances

Amenities

 100 m

Airport

 60 km

Public transport

 100 m

Schools

 1 km


Resort

 100 m

Contact us



George Sergiou

 (+357) 94055813

 info@lextrusrealestate.com

