



#12462

Spacious Apartment two Bedroom in Germasogeia (12462)

📍 Germasogeia, Limassol





€685,000 +VAT





Overview

Specifications

Bedrooms		Bathrooms		Covered	
 2		 2		 83 m ²	
Type		Apartment			
Toilets		2			
Status		Off plan			
Year of construction		2027			
Furnished		Unfurnished			
Structure		Concrete			
Facade		Concrete			
Energy efficiency rating		 A			

Description

Spacious Apartment two Bedroom in Germasogeia (12462)

Lextrus Real Estate proudly presents this exceptional off-plan apartment situated on the first floor of an elegant four-story residential building in the highly sought-after area of Germasogeia, Limassol. Designed with modern living in mind, this spacious home offers 83 m² of internal space, making it an ideal choice for families, professionals, or investors seeking a blend of comfort and convenience.

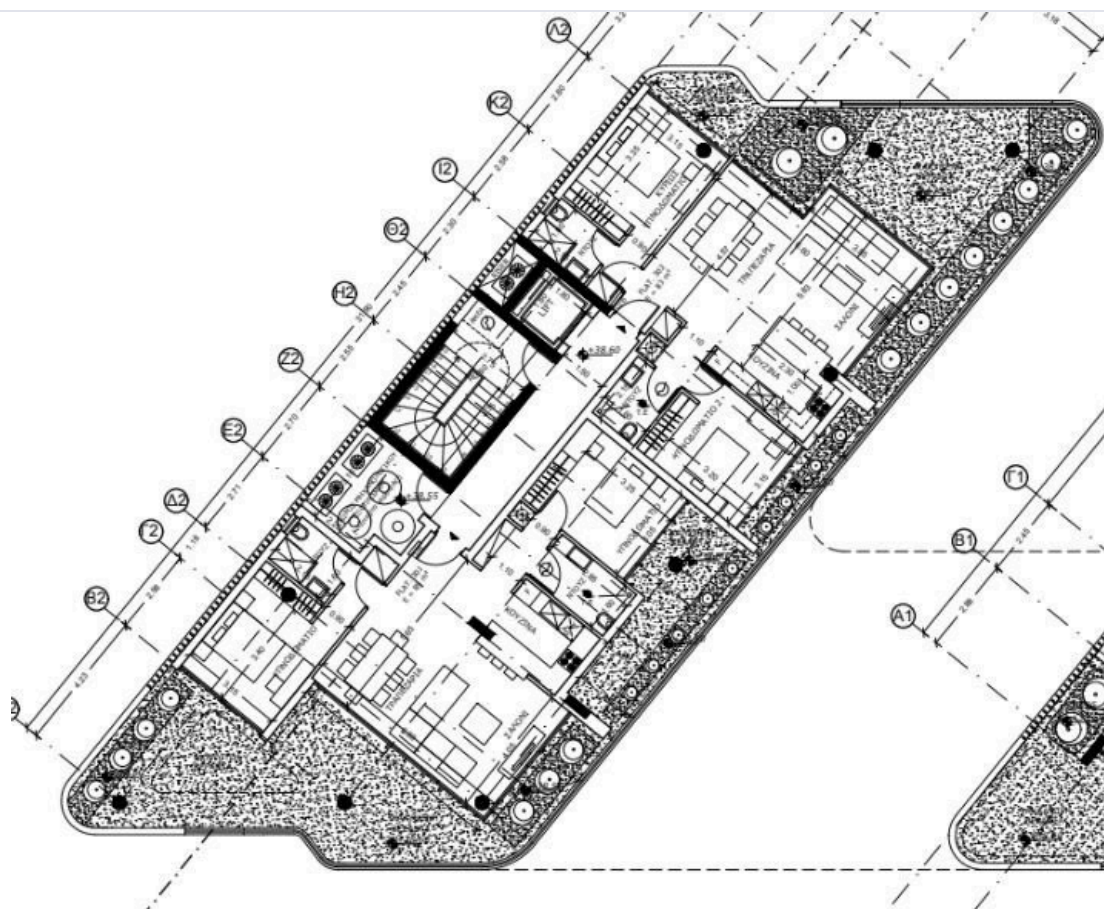
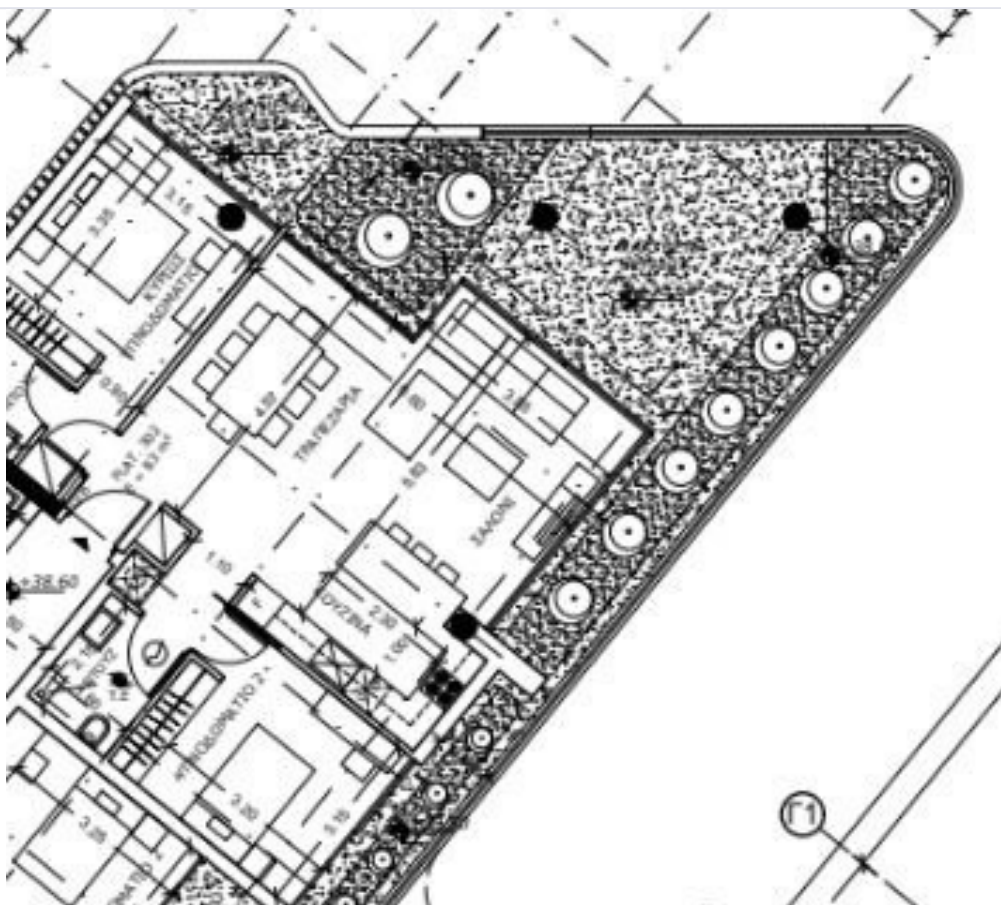
- Property Highlights:
- Three well-proportioned bedrooms and three contemporary bathrooms
 - Smart and functional open-plan layout promoting natural light and flow
 - Delivered unfurnished, allowing you to style and furnish to your taste
 - Secure gated complex for peace of mind
 - On-site gym facilities, perfect for health-conscious residents
 - Elevator access, ensuring comfort for all age groups

Location Benefits:

Nestled in the serene yet central Germasogeia neighborhood, this apartment offers easy access to:



Floor plans



Additional information

Facilities

Aircondition, Provision

Childrens playground

Elevator

Gated complex

Gym

Parking, Covered

Features

24-hour security

Balcony

Bar

Barbeque

Bath

CCTV (provision)

Electric car charger (provision)

Fire detector

Distances

Amenities



1 km

Airport



60 km

Sea



1 km

Schools



1 km

Resort



700 m

Contact us



George Sergiou

 (+357) 94055813

 info@lextrusrealestate.com

