



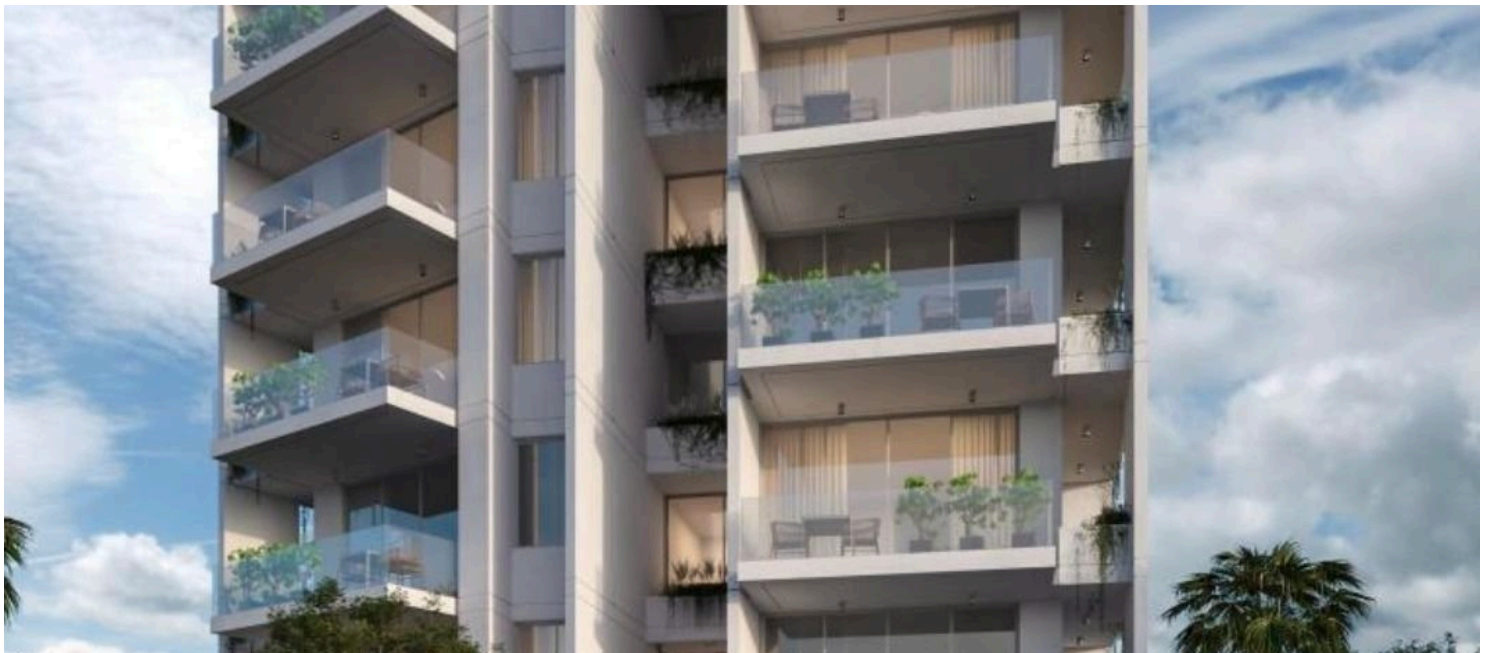
#12451

? NEAR THE SEA MODERN 2 BEDROOM APARTMENT IN FANEROMENI LARNACA (4921)

📍 Faneromeni, Larnaca





€320,000 +VAT





Overview

Specifications

| | | | | | |
|---|--|---|--|---|--|
| Bedrooms | | Bathrooms | | Covered | |
|  2 | |  2 | |  75 m ² | |
| Type | | Apartment | | | |
| Toilets | | 2 | | | |
| Status | | Off plan | | | |
| Year of construction | | 2025 | | | |
| Furnished | | Unfurnished | | | |
| Structure | | Concrete | | | |
| Facade | | Concrete | | | |
| Energy efficiency rating | |  A | | | |

Description

? NEAR THE SEA MODERN 2 BEDROOM APARTMENT IN FANEROMENI LARNACA (4921)

? Location: Larnaca, Faneromeni, Cyprus

? Price: €300,000 +VAT

Key Features:

- ?? Bedrooms: 2
- ? Bathrooms: 2
- ? Toilets: 2
- ? Parking Space: 1 (Covered)
- ? Internal Area: 75 m²
- ? Covered Veranda: 22 m²
- ? Flowerbed: 10 m²
- ? Common Area: 10 m²
- ? Total Area: 114 m²
- ? Status: Off Plan
- ? City: LARNACA, Area: Faneromeni, Country: Cyprus
- ? Move-in Ready: February 2027, Start construction works June 2025
- ? Energy Efficiency Rating: A
- ?? Floors: 5 (Apartment on 2nd Floor)

Location Amenities:



Floor plans



Additional information

Facilities

Aircondition, Provision

Solar water heater

Heating, Provision

Storage

Parking, Covered

Features

Easy access to highway

Luxury specifications

Near bus route

Easy access to main roads

Modern design

Painted

High ceilings

Near amenities

Veranda

Distances

Amenities

 2.5 km

Airport

 5.7 km

Sea

 1.5 km

Schools

 5 km

Contact us



Stefania Spyridou

 (+357) 99810880

 stephaniaSpyridou@gmail.com

