

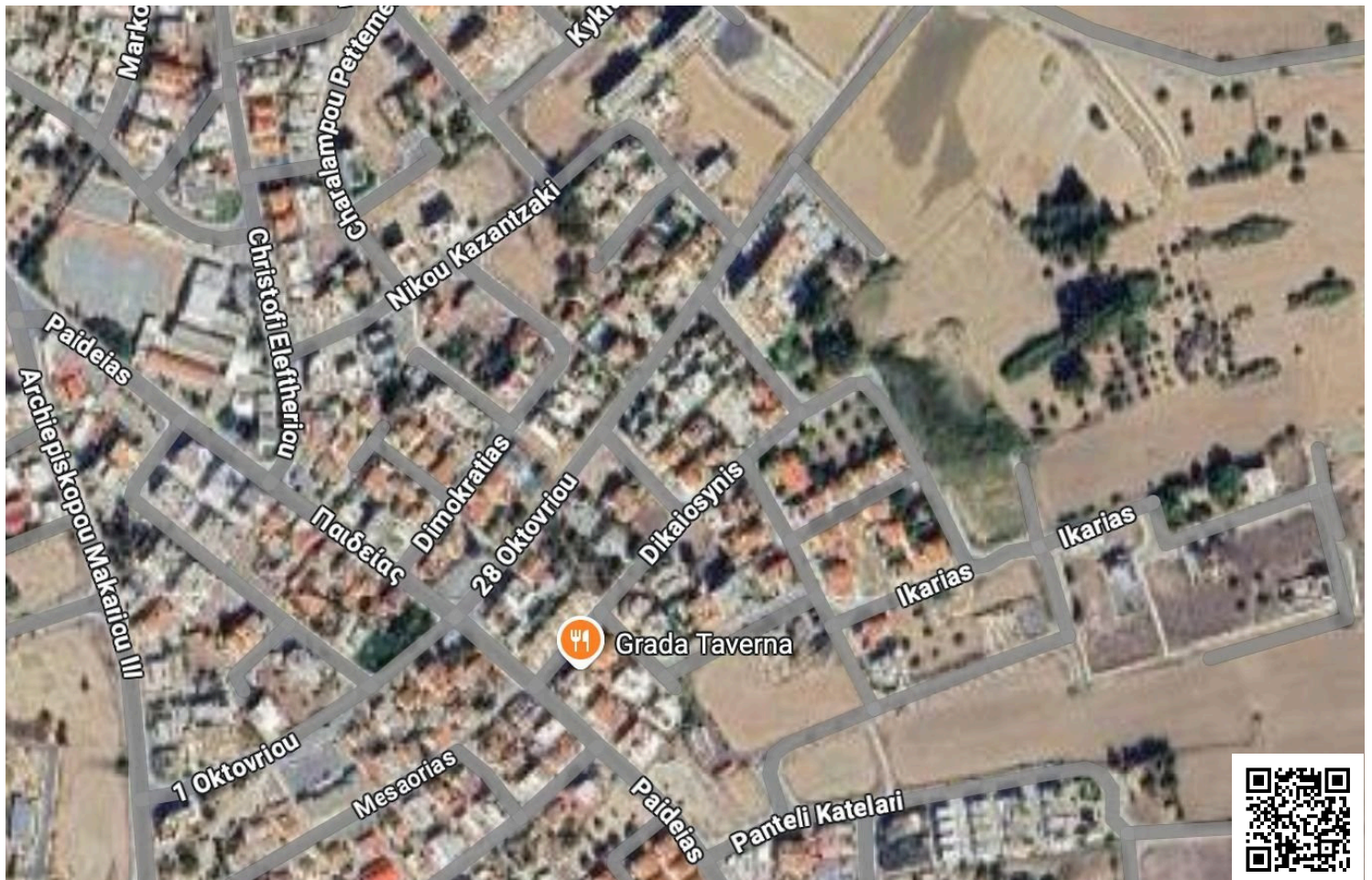


#12345

Corner Residential Plot for Sale in Oroklini – 639 m² | €295,000 (12345)

📍 Oroklini, Larnaca

€295,000



Overview

Specifications

Area		639 m ²	
Type	Building Plot	Title deed	Yes

Description

Corner Residential Plot for Sale in Oroklini – 639 m² | €295,000 (12345)

Property Description:
A rare opportunity to purchase a spacious residential corner plot in the sought-after area of Oroklini, Larnaca. Located in a peaceful and established neighborhood, this 639 m² plot offers excellent development potential for a family home or a small residential project.

With a high building density and coverage of 90%, this plot stands out for its flexibility and value. The elevated position provides beautiful mountain views, while the corner location allows for versatile architectural designs and enhanced accessibility.

Key Features:

Plot size: 639 m²

Planning zone: 90

Building density: 90%

Coverage: 50%

VAT: Not applicable

Location: Quiet, residential area of Oroklini

Orientation: Corner plot with wide road frontage



Additional information

Features

Connected to electric mains

Easy access to highway

Investment opportunity

Near bus route

Quiet area

Corner

Easy access to main roads

Mountain view

Panoramic view

Water well

Country view

Elevated

Near amenities

Prime land

Distances

Amenities



300 m

Airport



18 km

Sea



2 km

Public transport



300 m

Schools



200 m

Resort



2 km

Contact us



Giorgos Tsiampas

📞 (+357) 99982112

✉️ infolextrusrealestate@gmail.com

