



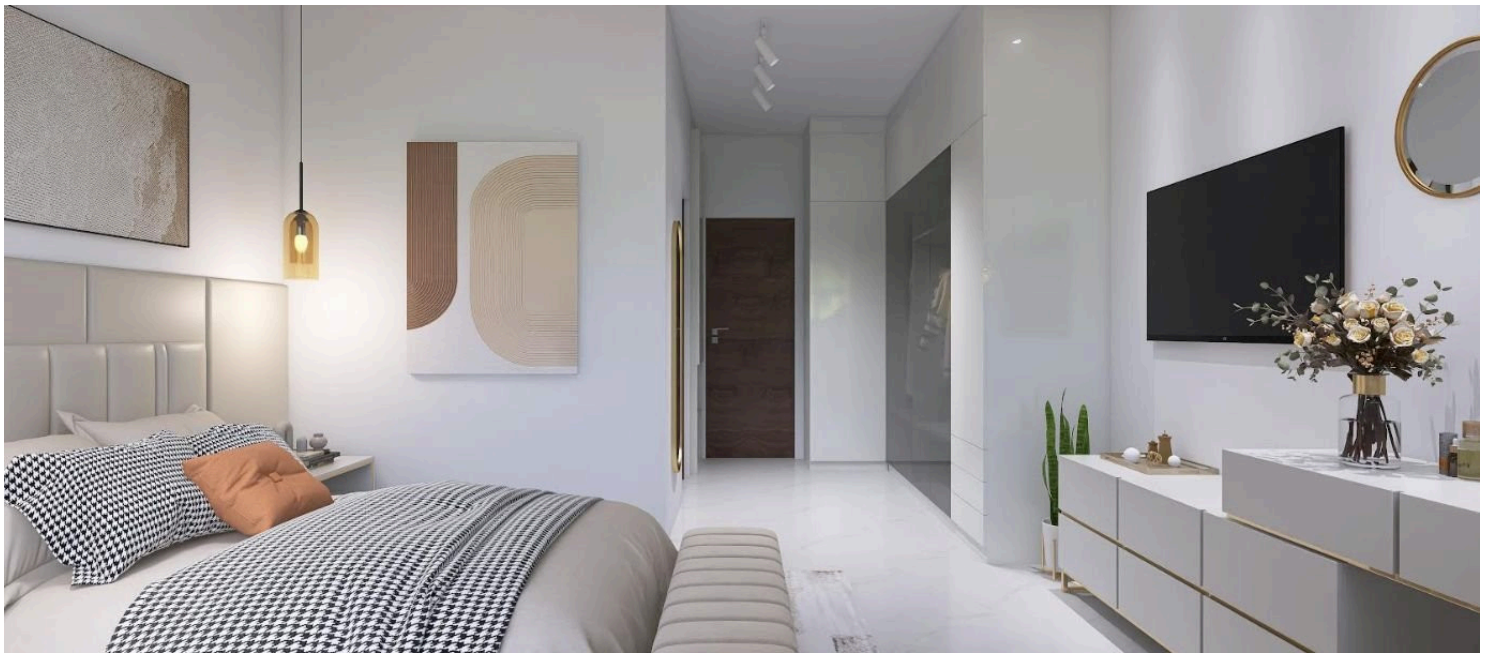
#12292

Modern off plan House in Peaceful Livadia Area (12292)

📍 Livadia, Larnaca





€295,000 +VAT





Overview

Specifications

Bedrooms		Bathrooms		Covered	
 3		 2		 125 m ²	
Type	Semi-Detached House				
Toilets	2				
Plot	169 m ²				
Status	Off plan				
Year of construction	2026				
Furnished	Unfurnished				
Structure	Concrete				
Facade	Concrete				
Energy efficiency rating	 A+				

Description

Modern off plan House in Peaceful Livadia Area (12292)

Presenting a brand-new, house in the peaceful and highly sought-after neighborhood of Livadia, Larnaca. Designed with modern living in mind, this property offers a perfect mix of comfort, space, and practicality.

? Property Features:

Internal Area: 125 m² of smartly designed living space

Bedrooms: 3 spacious bedrooms ideal for families or guests

Bathrooms: 2 contemporary bathrooms with quality finishes

Design: Modern open-plan layout that maximizes natural light and functionality

Completion Year: Scheduled for delivery date: is (off plan) 12-14 months

Furnishing: Will be delivered unfurnished – ready for you to personalize

Energy Efficiency: Rated A+, ensuring eco-friendly living and low energy costs

? Location & Area Benefits:

Situated in Livadia, one of Larnaca’s most desirable and developing areas



Floor plans



Additional information

Facilities

Aircondition, Provision

Parking, Uncovered

Solar photovoltaic panels

Features

Bath

Double glazing

Easy access to highway

Easy access to main roads

Investment opportunity

Pressurized water system

Quiet area

Distances

Amenities

 550 m

Airport

 18.8 km

Sea

 4.9 km

Schools

 1.3 km


Resort

 550 m

Contact us



George Sergiou

 (+357) 94055813

 info@lextrusrealestate.com

