



#12287

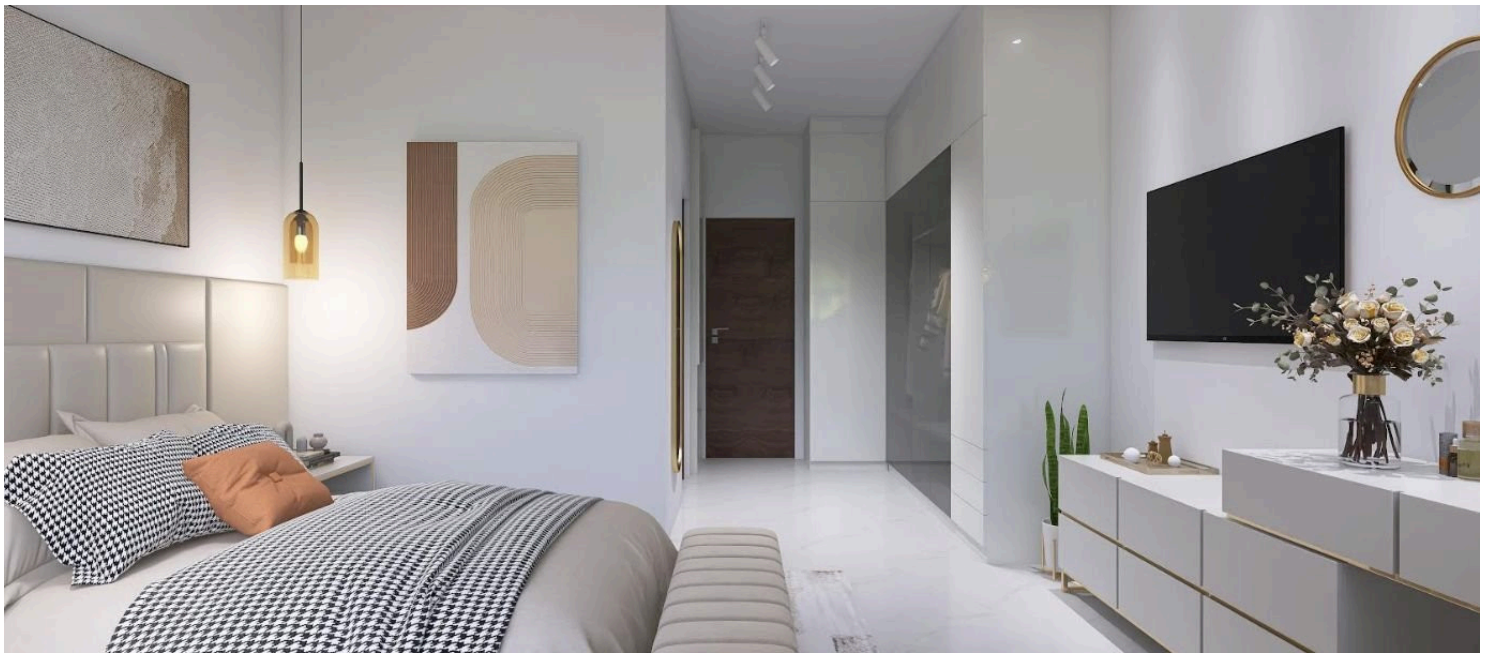
# Modern off plan House in Peaceful Livadia (12287)

📍 Livadia, Larnaca

**€295,000** +VAT











# Overview

## Specifications

|   |  |  |  |  |  |
|---|--|--|--|--|--|
| Bedrooms  |  | Bathrooms  |  | Covered  |  |
|  3 |  |  2    |  |  125 m <sup>2</sup> |  |
|   |  |  |  |  |  |
| Type  |  | Semi-Detached House  |  |  |  |
| Toilets   |  | 2  |  |  |  |
| Plot  |  | 153 m <sup>2</sup>   |  |  |  |
| Status  |  | Off plan   |  |  |  |
| Year of construction  |  | 2026   |  |  |  |
|   |  |  |  |  |  |
| Furnished   |  | Unfurnished  |  |  |  |
| Structure   |  | Concrete   |  |  |  |
| Facade  |  | Concrete   |  |  |  |
| Energy efficiency rating  |  |  A+ |  |  |  |

## Description

Modern off plan House in Peaceful Livadia (12287)

Presenting a brand-new, under-construction house in the peaceful and highly sought-after neighborhood of Livadia, Larnaca. Designed with modern living in mind, this property offers a perfect mix of comfort, space, and practicality.

? Property Features:

Internal Area: 125 m<sup>2</sup> of smartly designed living space

Bedrooms: 3 spacious bedrooms ideal for families or guests

Bathrooms: 2 contemporary bathrooms with quality finishes

Design: Modern open-plan layout that maximizes natural light and functionality

Completion Year: Scheduled for delivery date: is (off plan) 12-14 months

Furnishing: Will be delivered unfurnished – ready for you to personalize

Energy Efficiency: Rated A+, ensuring eco-friendly living and low energy costs

? Location & Area Benefits:

Situated in Livadia, one of Larnaca’s most desirable and developing areas





# Floor plans



# Additional information

## Facilities

Aircondition, Provision

Parking, Uncovered

Solar photovoltaic panels

## Features

Bath

Double glazing

Easy access to highway

Easy access to main roads

Investment opportunity

Pressurized water system

Quiet area

## Distances

Amenities

 550 m

Airport

 18.8 km

Sea

 4.9 km

Schools

 1.3 km


Resort

 550 m

## Contact us



**George Sergiou**

 (+357) 94055813

 [info@lextrusrealestate.com](mailto:info@lextrusrealestate.com)

