



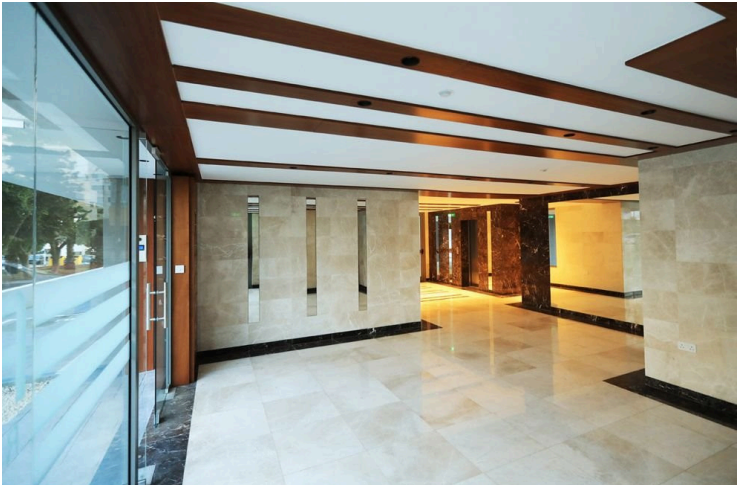
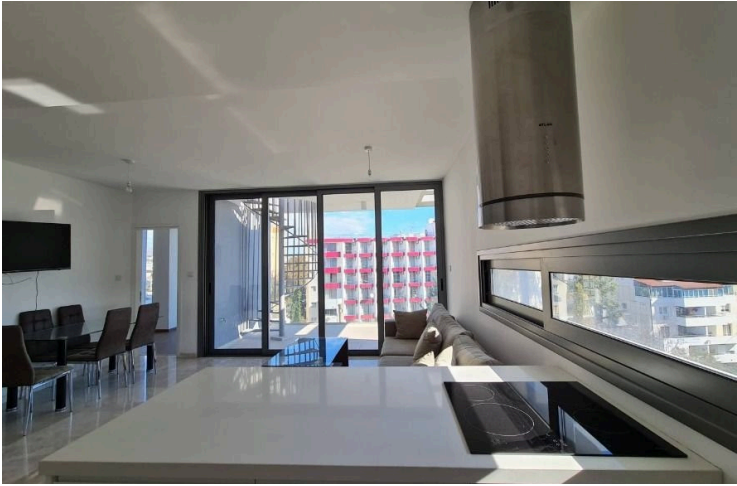
#12265

# Modern Neapolis Apartment Sea View Three Bedrooms (12265)

📍 Neapolis, Limassol





€640,000 +VAT





# Overview

## Specifications

Bedrooms		Bathrooms		Covered	
 3		 2		 94 m <sup>2</sup>	
Type		Apartment			
Toilets		2			
Status		Key ready			
Year of construction		2025			
Title deed		Yes			
Furnished		Unfurnished			
Structure		Concrete			
Facade		Concrete			
Energy efficiency rating		 B+			

## Description

Modern Neapolis Apartment Sea View Three Bedrooms (12265)

Discover modern city living in this key-ready apartment perched on the top floor of a five-story building in the highly desirable area of Neapolis, Limassol. With a generous 94 m<sup>2</sup> of internal space, this well-designed home offers three spacious bedrooms and two sleek bathrooms, ideal for families, professionals, or anyone seeking extra space in a prime location.

- ? 3 Comfortable Bedrooms
- ? 2 Contemporary Bathrooms
- ? Top-Floor Position with Elevator Access
- ? Abundant Natural Light & Panoramic Sea and City Views
- ? Completed in 2025
- ? Unfurnished, ready for personal customization

Step into a bright and airy layout with large windows that bathe the interiors in natural light, creating an inviting, open-plan living space perfect for both relaxing and entertaining. The apartment's modern design emphasizes functionality without compromising on style.

Located in the heart of Neapolis, one of Limassol's most vibrant and convenient neighborhoods, the property offers:

???? Walking distance to shops, restaurants, cafes, parks, and the beachfront





# Additional information

## Facilities

Aircondition, Split system

Elevator

Parking, Covered

Storage

## Features

Balcony

Bath

City view

Double glazing

Easy access to highway

Easy access to main roads

Investment opportunity

Kitchen appliances

Pressurized water system

Quiet area

Sea view

Veranda

Walking distance to beach

## Distances

Amenities



200 m

Sea



650 m

Schools



2.3 km

Resort



650 m

## Contact us



**George Sergiou**

☎ (+357) 94055813

✉ [info@lextrusrealestate.com](mailto:info@lextrusrealestate.com)

