

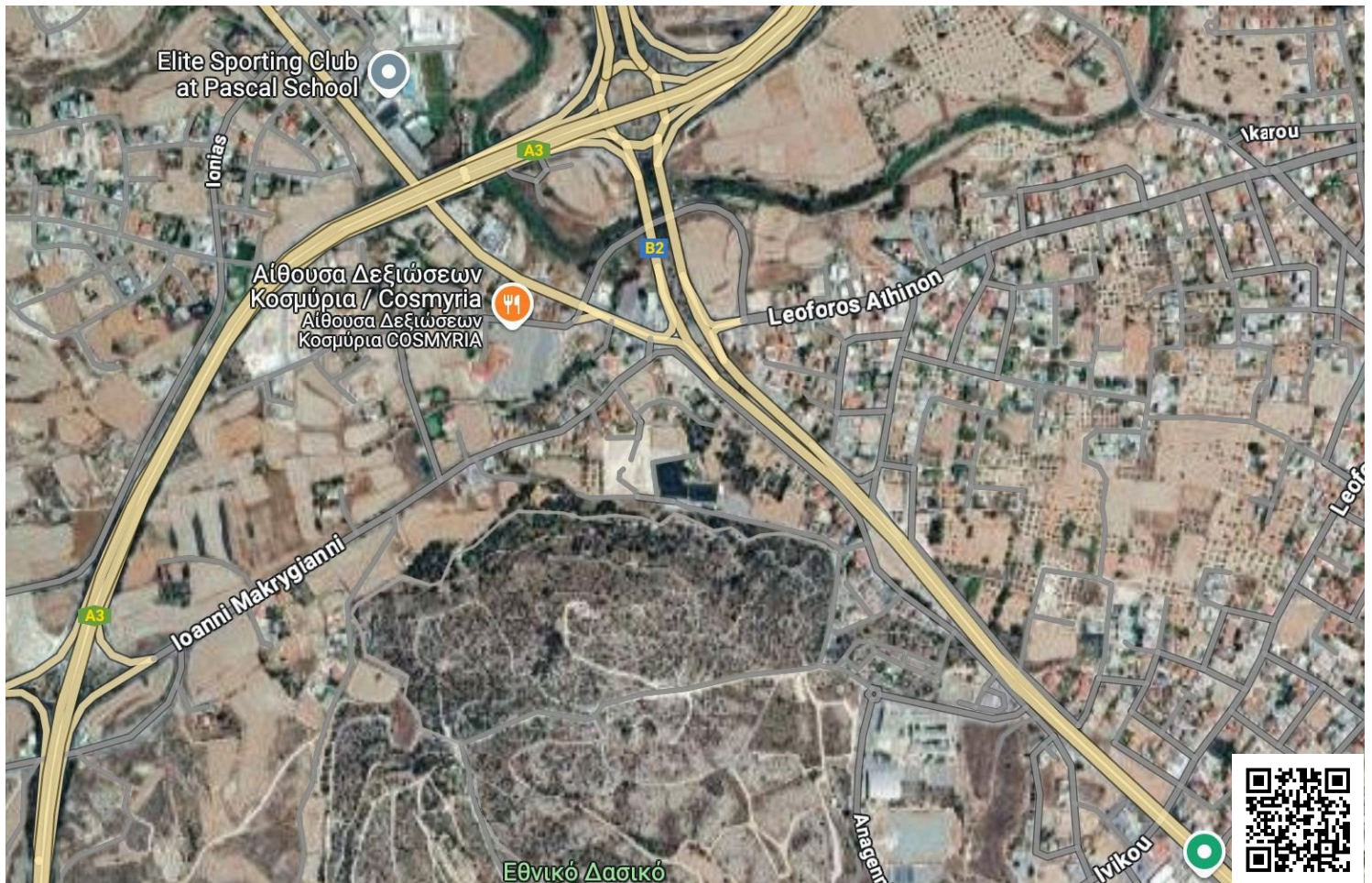


#12198

Prime Development Land – 22,901 sqm in Pascal Area, Larnaca | €2,500,000 + VAT (12198)

📍 Aradippou, Larnaca

€2,500,000 +VAT



Overview

Specifications

Area		22901 m ²	
Type	Development Land	Title deed	Yes

Description

Prime Development Land – 22,901 sqm in Pascal Area, Larnaca | €2,500,000 + VAT (12198)

An exceptional opportunity to acquire 22,901 sqm of prime residential development land in the prestigious Pascal area of Larnaca. This expansive corner plot offers a unique combination of panoramic 360° views, peaceful surroundings, and outstanding development potential in one of the city’s most sought-after locations.

Situated in a quiet residential area, the land benefits from easy access to main roads, the highway network, and Larnaca International Airport, while being close to essential amenities and top private schools such as Pascal.

Key Features:

Total Area: 22,901 sqm

Zone: Kα10 (Residential)

Building Density: 30%

Coverage: 20%

Floors Allowed: 2

Maximum Height: 10 meters

Price: €2,500,000 + VAT

Corner Plot with excellent visibility and access

Utilities Available: Electricity, water connection, and private water well



Additional information

Features

Connected to electric mains

Easy access to main roads

Mountain view

Own water supply

Quiet area

Corner

Elevated

Near amenities

Panoramic view

Water well

Easy access to highway

Investment opportunity

Near bus route

Prime land

Distances

Amenities



100 m

Airport



6 km

Sea



5 km

Public transport



100 m

Schools



100 m

Resort



2 km

Planning zones

Zone	Cover factor	Build factor	Max height	Max floors	Affected percentage
Ka10	20%	30%	10 m	2	-

Contact us



Giorgos Tsiampos

📞 (+357) 99982112

✉️ infolextrusrealestate@gmail.com

