



#12180

# Two Bedroom Apartment in Agios Athanasios in Limassol (12180)

📍 Agios Athanasios, Limassol

€525,000










# Overview

## Specifications

|   |  |   |  |  |  |
|---|--|---|--|--|--|
| Bedrooms  |  | Bathrooms   |  | Covered  |  |
|  2 |  |  2   |  |  101 m <sup>2</sup> |  |
| Type  |  | Apartment   |  |  |  |
| Toilets   |  | 2   |  |  |  |
| Covered veranda   |  | 23 m <sup>2</sup>   |  |  |  |
| Uncovered veranda   |  | 5 m <sup>2</sup>  |  |  |  |
| Status  |  | Under construction  |  |  |  |
| Year of construction  |  | 2026  |  |  |  |
| Furnished   |  | Unfurnished   |  |  |  |
| Structure   |  | Concrete  |  |  |  |
| Facade  |  | Concrete  |  |  |  |
| Communal charge frequency   |  | Monthly   |  |  |  |
| Energy efficiency rating  |  |  A |  |  |  |

## Description

A new luxury building under construction in the prestigious Ayios Athanasios area completion date May 2026.

This exclusive development features 8 apartments ranging from 2 to 5 bedrooms, each designed with meticulous attention to detail and high-quality finishes.

Each floor has spacious balconies enclosed by glass railings, maintaining an open and transparent look. The windows are large, full-height sliding glass doors, allowing for ample natural light to flood the interior spaces. This design emphasizes a connection between indoor and outdoor areas.

The ceilings in kitchens, toilets, and corridors will be adorned with gypsum boards and built-in spotlights, creating a sleek and modern look.

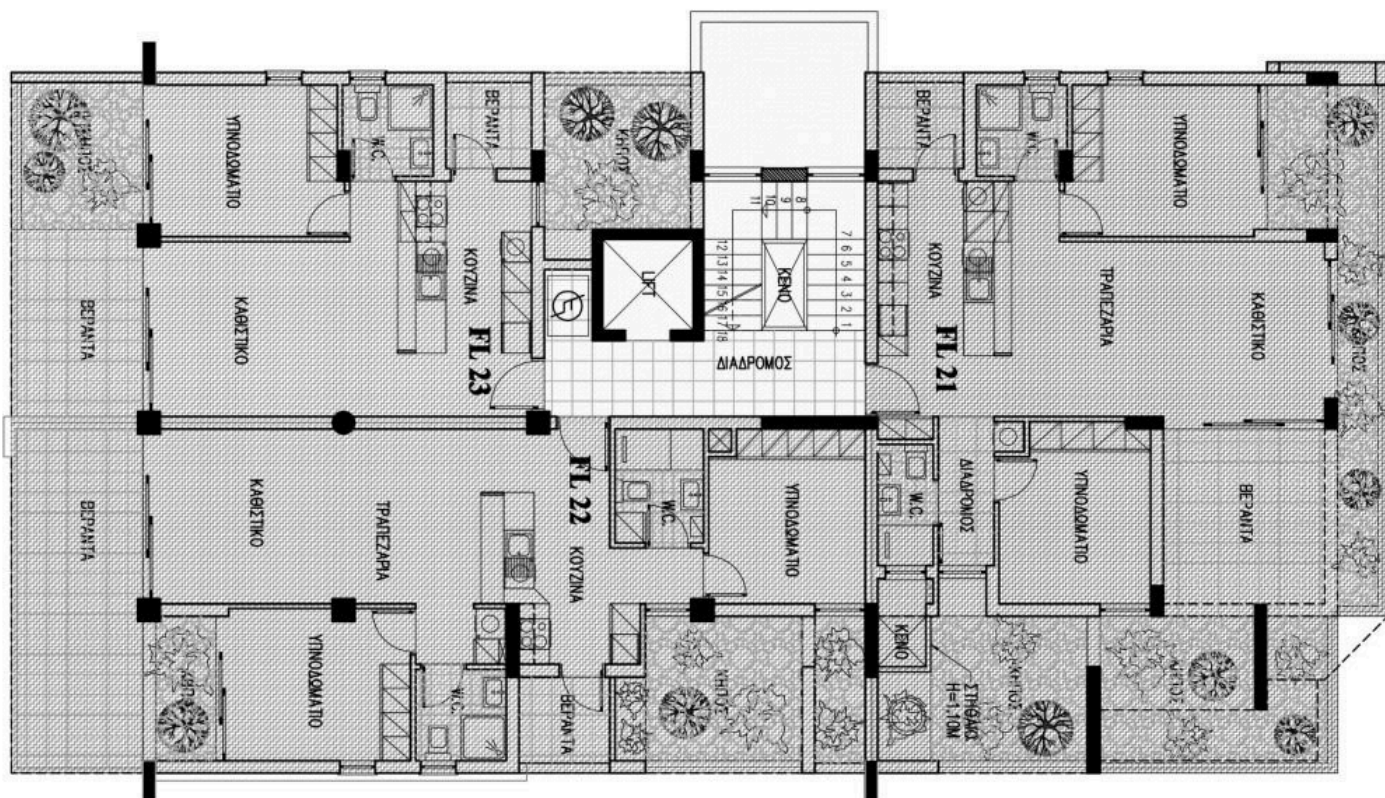
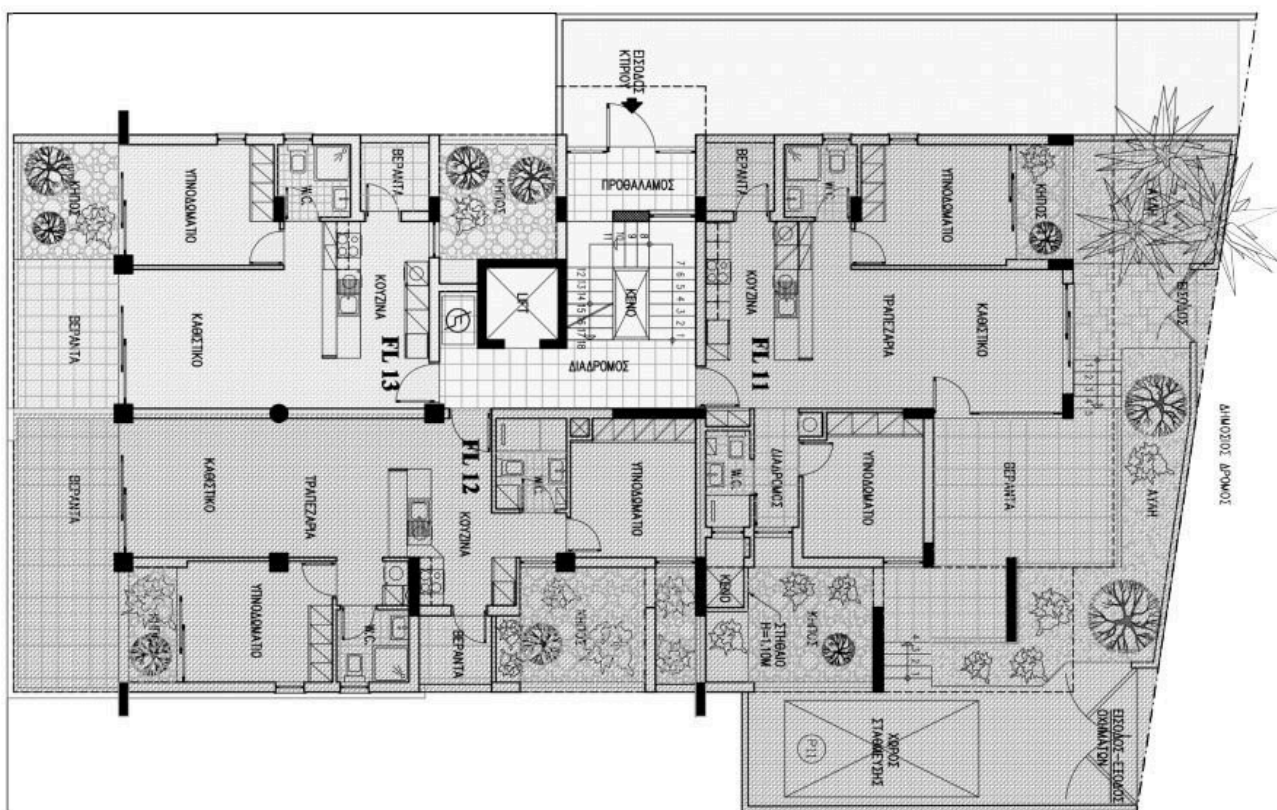
The aluminum windows offer thermal insulation performance with double-glazed glass for added energy efficiency. Each flat will have a solar panel for hot water, a reservoir tank, provision for a water softener, and a pressurized system to ensure optimal water pressure. Experience a new level of luxury living at Bliss Residence.

Agios Athanasios is a highly desirable residential area in Limassol, offering a perfect blend of tranquility, natural beauty, and modern convenience. With its elevated location, residents enjoy stunning open sea views that stretch all the way to the coastline. This rapidly developing area seamlessly combines the charm of a traditional village with the amenities of a contemporary town, boasting hotels, tourist apartments, businesses, and shops along its vibrant southeastern coastal side. It's the ideal selling for those seeking a balanced and elevated lifestyle.





# Floor plans



# Additional information

## Facilities

Aircondition, Provision

Parking, Covered

Elevator

Solar water heater

Heating, Provision

Storage

## Features

Balcony

Ceramic tiles

Connected to electric mains

En suite shower

Entrance gate, automated

Luxury specifications

Near bus route

Pressurized water system

Sound insulation

Veranda

Bright

City view

Double glazing

Energy efficient doors/windows

Granite countertops

Modern design

Open plan

Quiet area

Spacious rooms

Veranda, large

CCTV

Combined kitchen and dining area

Easy access to main roads

Entrance gate

Investment opportunity

Near amenities

Pipe-in-pipe plumbing system

Shower

Thermal insulation

## Distances

Amenities

 500 m

Airport

 50 km

Sea

 1 km

Public transport

 500 m


Schools

 1 km

## Contact us



**Stavroula Michail**

 (+357) 99810880

 stavroulamichail.lextrus@gmail.com

