



#12175

A Masterpiece of Modern Luxury with Panoramic Sea & Mountain Views | Germasogeia | Limassol | (12175)

📍 Germasogeia, Limassol





€5,000,000 +VAT





Overview

Specifications

Bedrooms		Bathrooms		Covered	
 6		 6		 631.6 m ²	
Type		Detached Villa			
Toilets		7			
Plot		888 m ²			
Status		Off plan			
Title deed		Land			
Furnished		Optional furnished			
Structure		Concrete			
Facade		Concrete			
Energy efficiency rating		 A+			

Description

A Masterpiece of Modern Luxury with Panoramic Sea & Mountain Views | Germasogeia | Limassol | (12175)

FEATURES

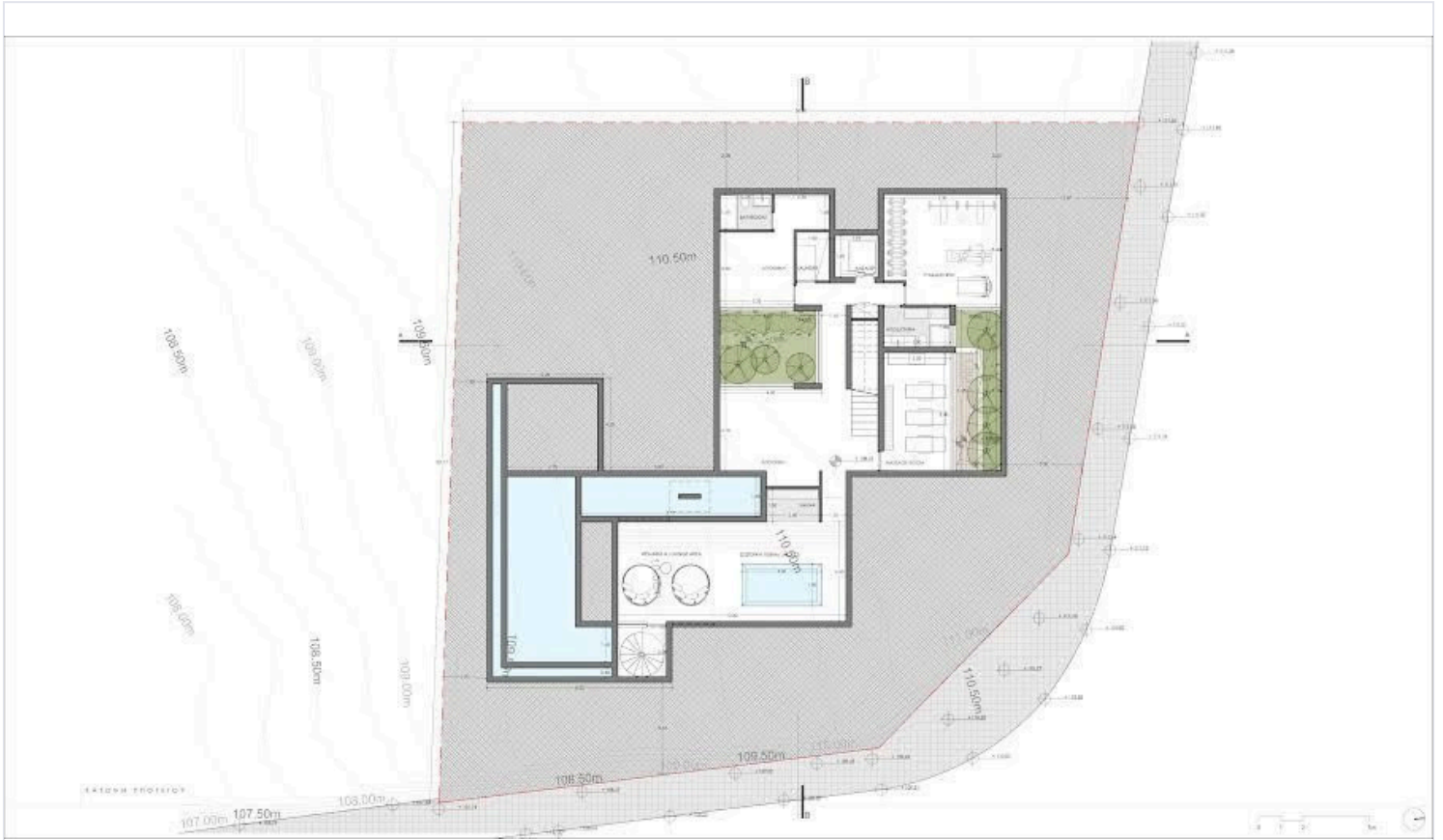
- Best quality ceramic tiles
- Modern italian kitchen with granite top
- Built-in laquered cupboards in all bedrooms
- Gypsum decorative ceilings with lighting and fiber optics
- Floor heating with MITSUBISHI machinery
- VRV A/C Toshiba

AUTOMATED HOME CONTROL SYSTEM:

- A system of communication (internet & intercom phone)
- Alarm system with cameras & video surveillance.
- Remote control curtains throughout.
- Electric gate
- Double glazed windows
- Solar panels
- Water pressure pump



Floor plans



Additional information

Facilities

Aircondition, Central system

Heating, Underfloor

Maid's room

Pool, Private

Solar photovoltaic panels
(provision)

Elevator

Indoor pool, Private

Outdoor shower

Sauna

Solar water heater

Gym

Landscaped garden

Parking, Covered

Solar photovoltaic panels

Storage

Features

Alarm system

Bar

Bathroom underfloor heating

CCTV (provision)

Cul de sac

En suite bathroom

Entrance gate

Fitted wardrobes

Granite countertops

Guestroom

Laundry room

Office

Pipe-in-pipe plumbing system

Quiet area

Shower

Sound insulation

Utility room

Walk-in closet

Alarm system (provision)

Barbeque

Bright

Ceramic tiles

Double glazing

En suite shower

Entrance gate, automated

Garden

Ground floor bedroom

Internal stairs

Luxury specifications

Openings in opposite sides

Pool bar

Roof garden

Shutters, electric (provision)

Spacious rooms

Veranda

Water softener

Balcony

Bath

CCTV

Connected to electric mains

Easy access to main roads

Energy efficient doors/windows

Fireproof entrance doors

Garden, large

Guest WC

Internet

Mountain view

Panoramic view

Pressurized water system

Sea view

Smart home automation (provision)

Thermal insulation

Veranda, large



Distances

Amenities

 700 m

Airport

 50 km

Sea

 3 km

Public transport

 1 km


Schools

 700 m

Contact us



Stefania Spyridou

 (+357) 99810880

 stephaniaSpyridou@gmail.com

