

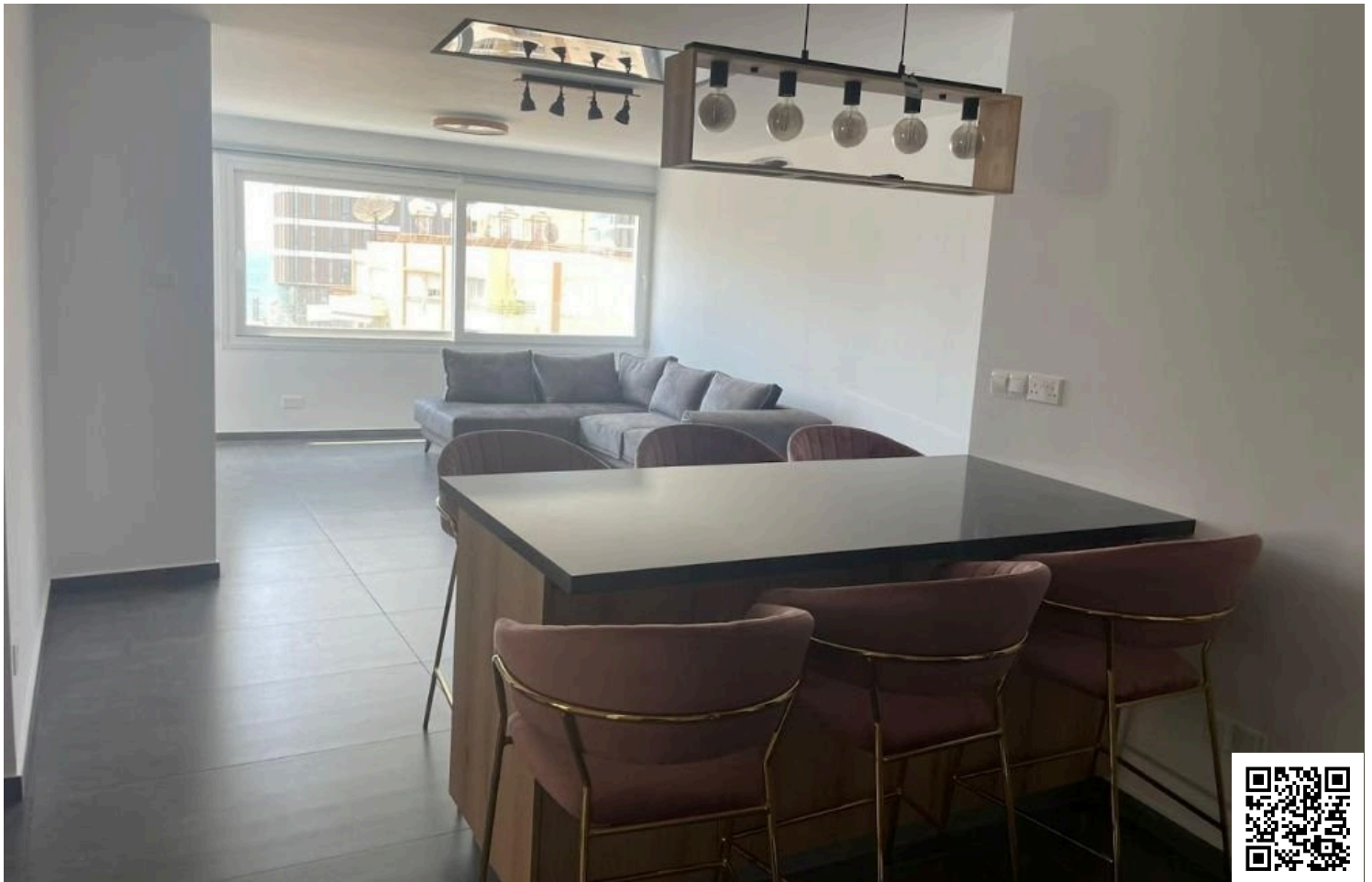


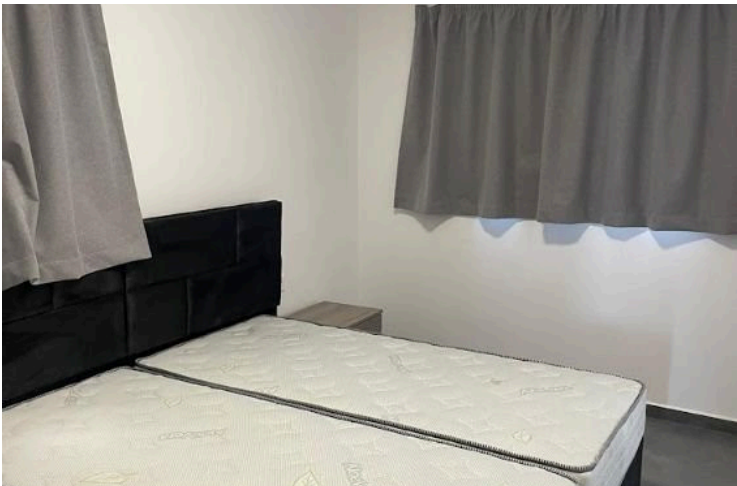
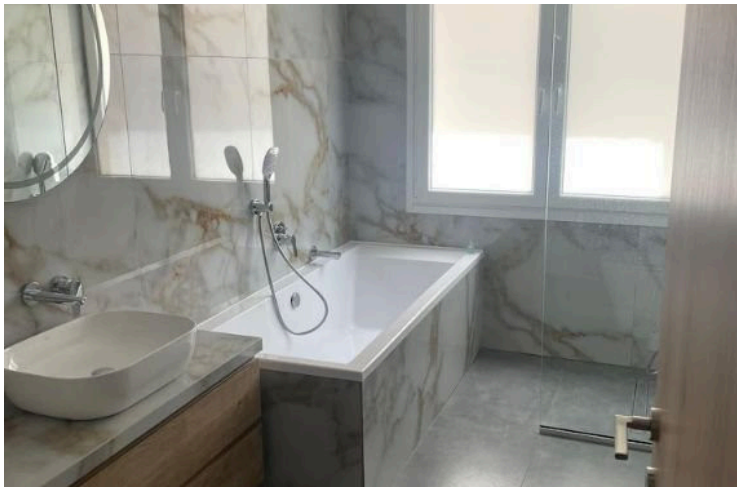
#12154

# Spacious 3 Bedroom Apartment in Neapolis Center (12154)

📍 Neapolis, Limassol





€470,000





# Overview

## Specifications

Bedrooms		Bathrooms		Covered	
 3		 2		 110 m <sup>2</sup>	
Type		Apartment			
Toilets		2			
Status		Key ready			
Furnished		Fully furnished			
Structure		Concrete			
Facade		Concrete			
Energy efficiency rating		 A			

## Description

Spacious 3 Bedroom Apartment in Neapolis Center (12154)

Discover this move-in-ready 3-bedroom apartment offering modern comfort and city convenience in the heart of Neapolis. Situated on the fifth floor of a secure, gated complex, this stylish home boasts 110 m<sup>2</sup> of internal living space, thoughtfully designed to accommodate families and professionals alike.

The bright open-plan living and dining area flows seamlessly onto a private balcony, providing lovely city views and a perfect spot to relax or entertain. With two well-appointed bathrooms, the layout offers both functionality and comfort.

The building includes elevator access, ensuring convenience for all residents. With an Energy Efficiency Class A rating, the apartment also promises lower utility bills and a more eco-conscious lifestyle.

Located in one of Limassol’s most vibrant neighborhoods, Neapolis is known for its dynamic atmosphere, excellent amenities, and easy access to green spaces and the coast. Residents will enjoy proximity to shops, cafés, schools, and direct routes to the highway—making everyday life seamless and connected.

Property Highlights:

3 Bedrooms | 2 Bathrooms

110 m<sup>2</sup> of Internal Space



# Additional information

## Facilities

Aircondition, Split system

Elevator

Gated complex

Parking, Covered

Solar photovoltaic panels

## Features

Balcony

Balcony, front

Bath

City view

Double glazing

Easy access to highway

Easy access to main roads

Kitchen appliances

Pressurized water system

Quiet area

Walking distance to beach

## Distances

Amenities



400 m

Sea



400 m

Schools



1.2 km

Resort




300 m

## Contact us



**George Sergiou**

 (+357) 94055813

 [info@lextrusrealestate.com](mailto:info@lextrusrealestate.com)

