

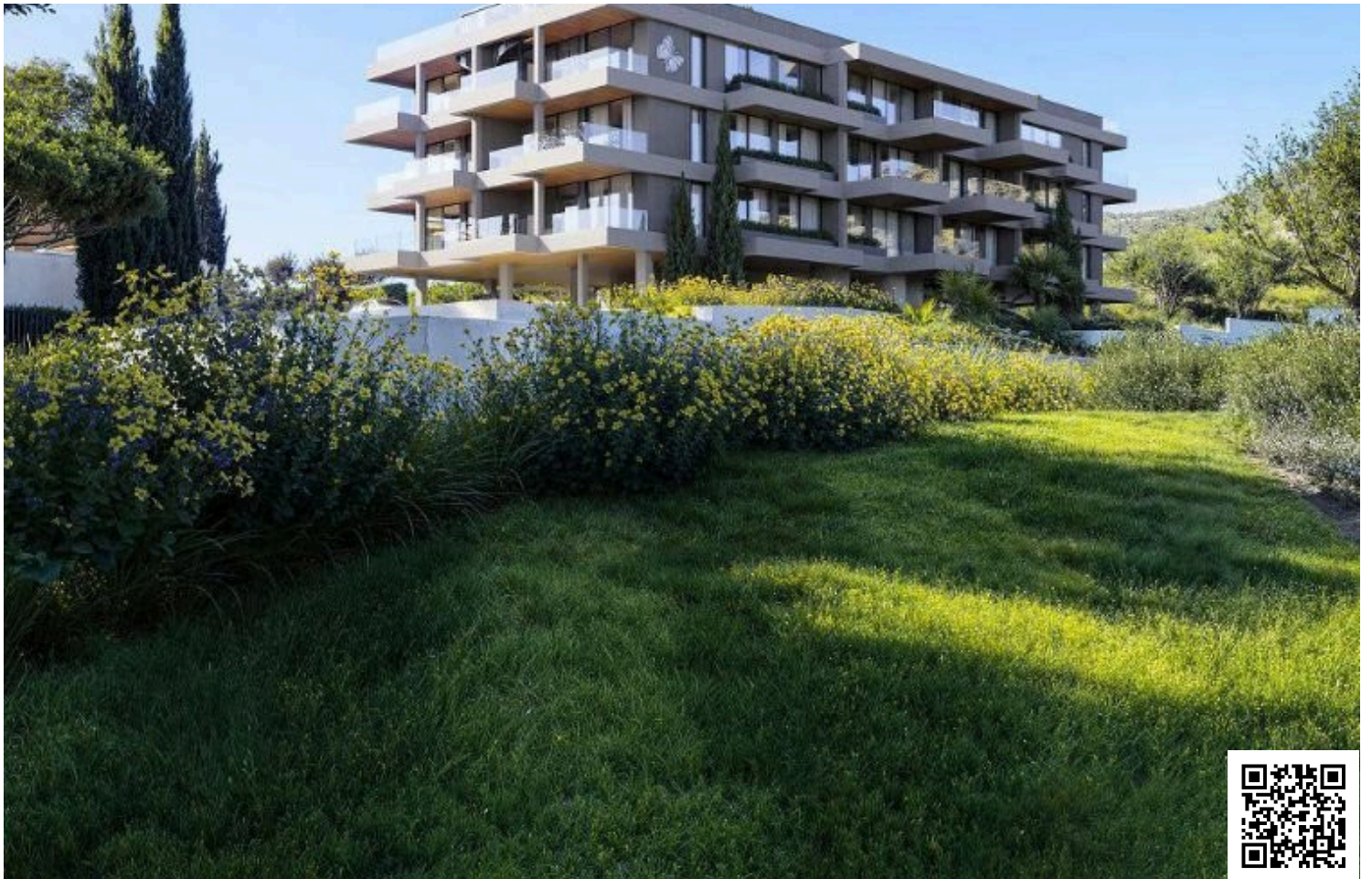


#12144

Modern 2 Bedroom Germasogeia Apartment with Pool (12143)

📍 Germasogeia, Limassol





€510,000 +VAT





Overview

Specifications

Bedrooms		Bathrooms		Covered	
 2		 2		 91 m ²	
Type		Apartment			
Toilets		2			
Plot		262 m ²			
Status		Off plan			
Year of construction		2027			
Furnished		Unfurnished			
Structure		Concrete			
Facade		Concrete			
Energy efficiency rating		 A			

Description

Modern 2 Bedroom Germasogeia Apartment with Pool (12143)

For sale: A beautifully designed ground-floor apartment offering 91 m² of comfortable internal living space, thoughtfully laid out with 2 spacious bedrooms and 2 contemporary bathrooms. With an Energy Efficiency Class A rating, this home combines modern aesthetics, functionality, and sustainability for a lifestyle of ease and efficiency.

The open-plan living and dining area is filled with natural light thanks to large windows, creating a bright and welcoming atmosphere. The residence is delivered unfurnished, giving you the opportunity to shape the interiors according to your personal style.

Located in the vibrant and highly desirable Germasogeia neighborhood, residents benefit from a perfect balance of urban convenience and relaxed living. Within close proximity, you'll find a variety of shops, cafés, parks, schools, and coastal paths. The nearby highway access also ensures seamless connections to the city center, business districts, and the beachfront.

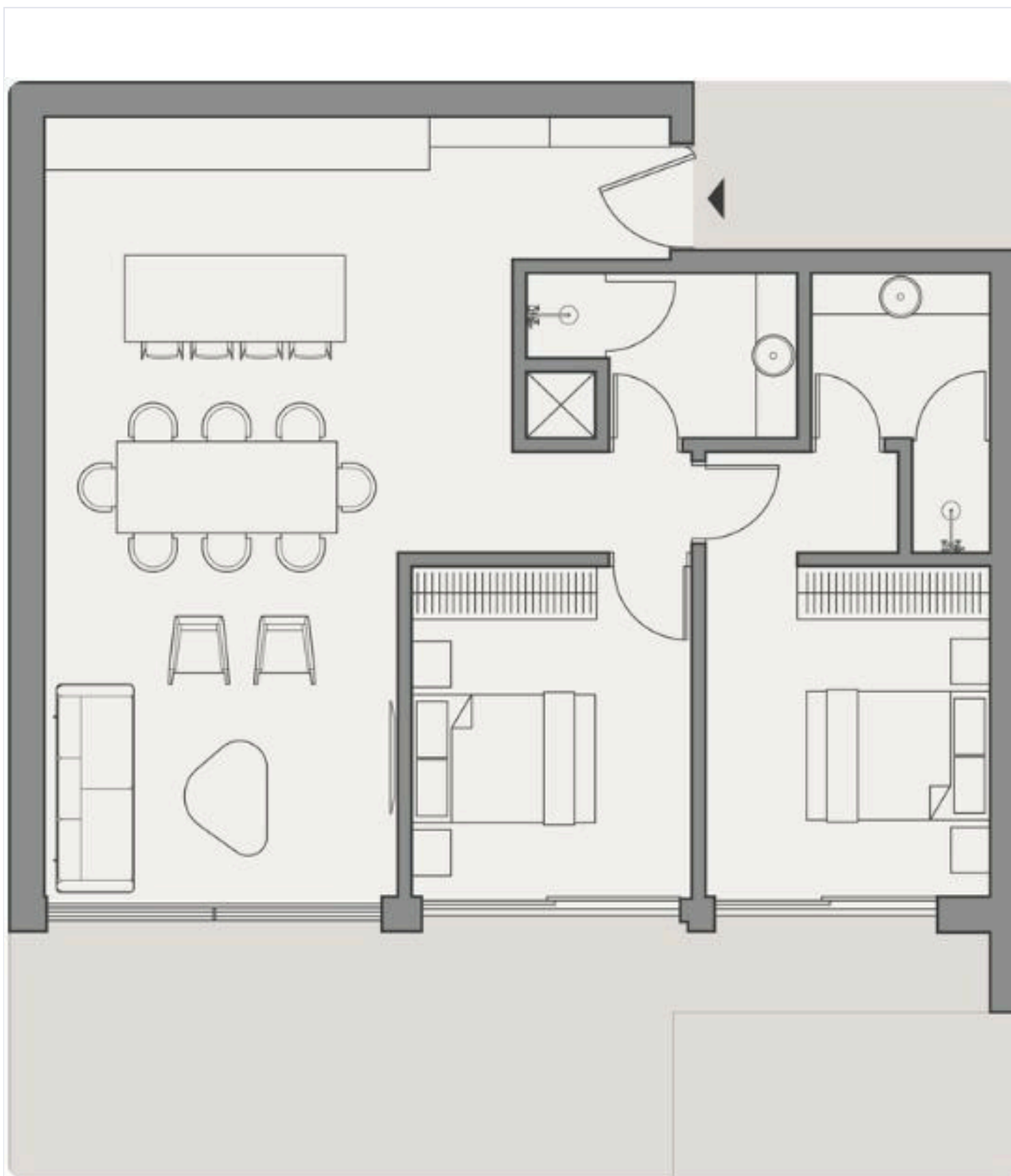
This modern development offers premium communal amenities, including a large swimming pool and a fully equipped gym, providing the ideal setting for both wellness and leisure right at your doorstep.

Key Features:

2 Bedrooms | 2 Bathrooms



| Floor plans



Additional information

Facilities

Aircondition, Provision

Indoor pool, Communal

Clubhouse

Pool, Communal

Gym

Solar photovoltaic panels (provision)

Features

Alarm system

Double glazing

Pressurized water system

Balcony

Easy access to highway

Quiet area

Bath

Easy access to main roads

Distances

Amenities

 300 m

Airport

 64 km

Sea

 6.2 km

Schools

 1.3 km


Resort

 2 km

Contact us



George Sergiou

 (+357) 94055813

 info@lextrusrealestate.com

