



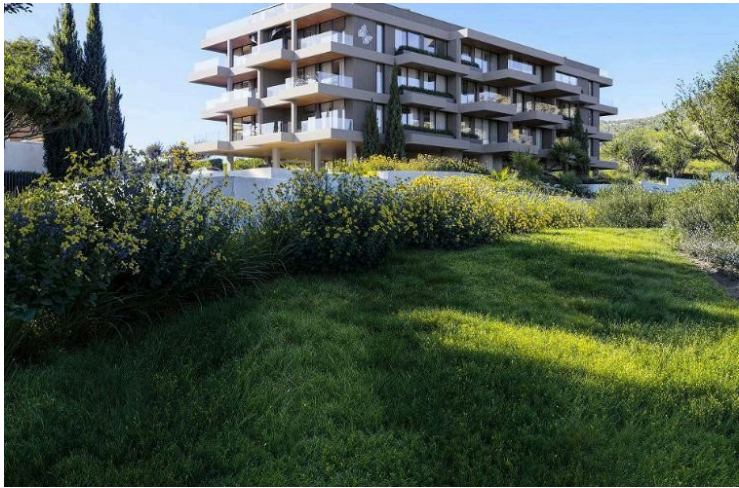
#12141

Modern 2 Bedroom Germasogeia Apartment with Pool (12141)

📍 Germasogeia, Limassol





€495,000 +VAT





Overview

Specifications

Bedrooms		Bathrooms		Covered	
 2		 2		 90 m ²	
Type		Apartment			
Toilets		2			
Status		Off plan			
Year of construction		2027			
Furnished		Unfurnished			
Structure		Concrete			
Facade		Concrete			
Energy efficiency rating		 A			

Description

Modern 2 Bedroom Germasogeia Apartment with Pool (12141)

For sale is an off-plan, modern apartment located on the ground floor in the desirable area of Germasogeia. Offering a generous internal space of 90 m2, this property features two spacious bedrooms and two contemporary bathrooms. With an energy efficiency rating of A, this apartment is designed to minimize energy costs and provide comfort all year round.

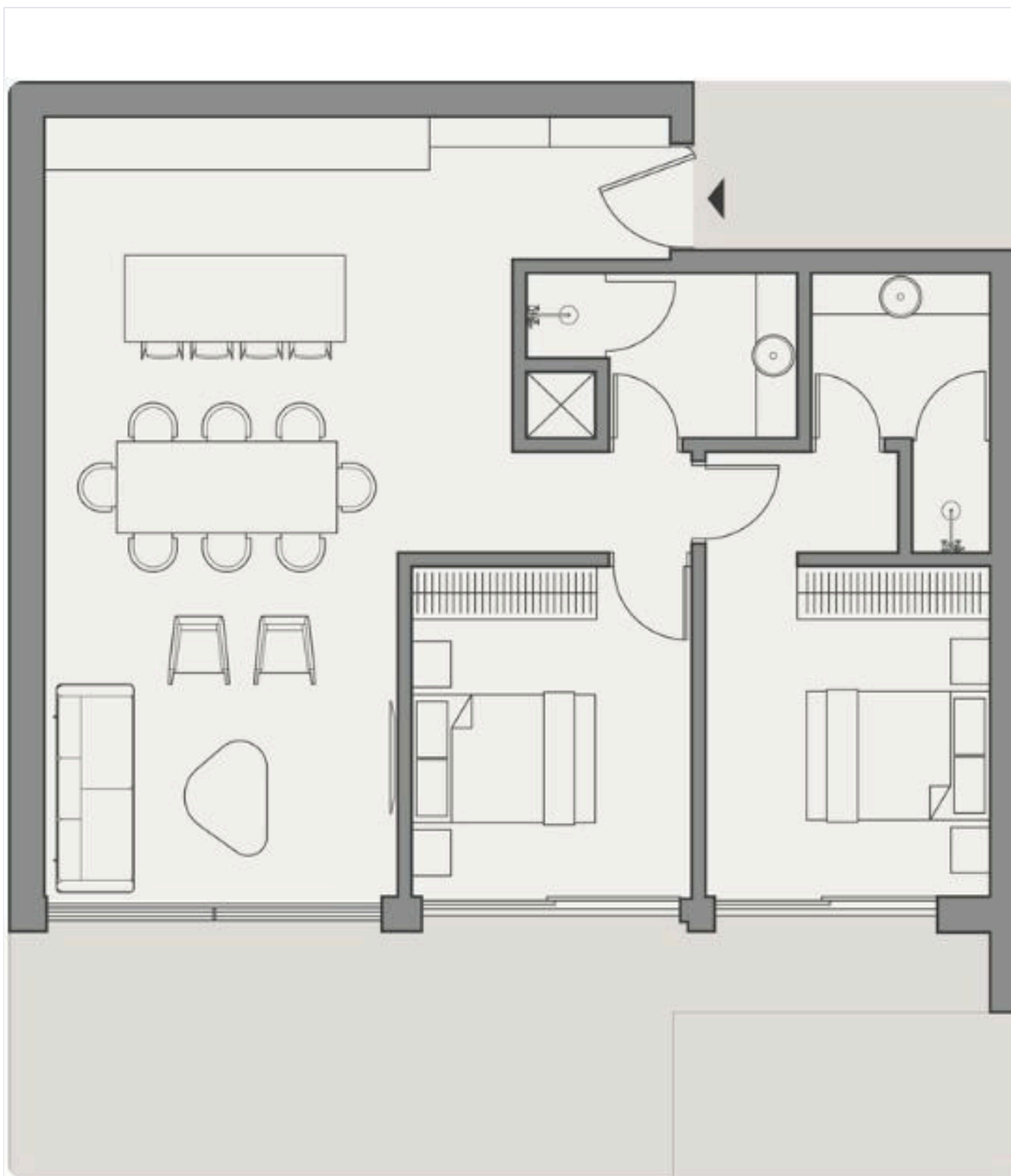
Germasogeia is a lively area known for its attractive blend of residential comfort and urban convenience. It is popular for its peaceful atmosphere, well-kept neighborhoods, and easy access to everyday amenities. You will find shops, cafes, and green spaces nearby, making it a perfect location for both families and professionals.

The apartment will be ready in 2027 and comes unfurnished, giving you the freedom to style your home as you wish. Residents can enjoy a communal swimming pool and a fully equipped gym, ideal for relaxation and fitness. The building is situated close to the highway, offering quick and easy connections to the city center and surrounding areas.

This property is exclusively advertised by Lextrus Real Estate. Contact us for more information or to discuss your future home in Germasogeia.



| Floor plans



Additional information

Facilities

Aircondition, Provision

Indoor pool, Communal

Clubhouse

Pool, Communal

Gym

Solar photovoltaic panels (provision)

Features

Alarm system

Double glazing

Pressurized water system

Balcony

Easy access to highway

Quiet area

Bath

Easy access to main roads

Distances

Amenities

 300 m

Airport

 64 km

Sea

 6.2 km

Schools

 1.3 km


Resort

 2 km

Contact us



George Sergiou

 (+357) 94055813

 info@lextrusrealestate.com

