



#12062

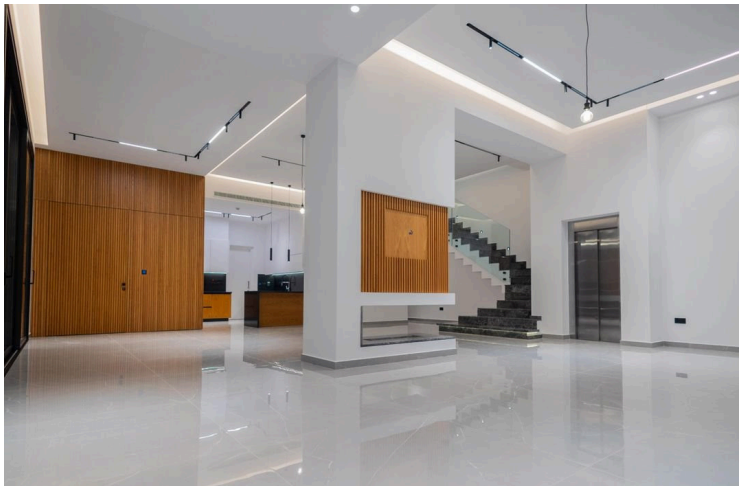
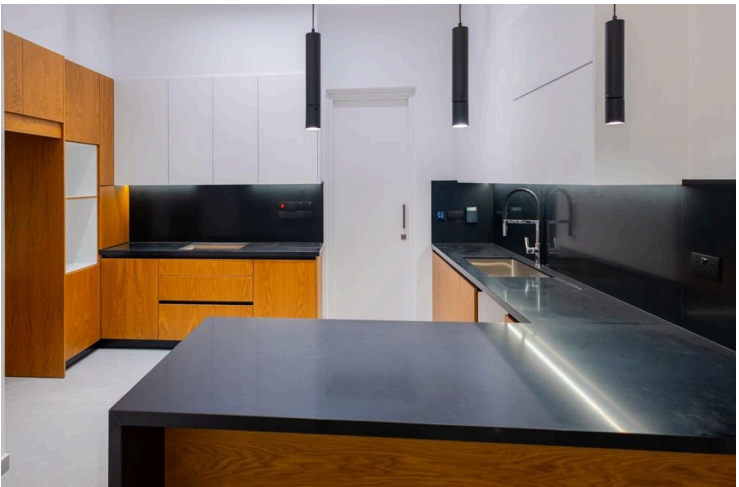
# Modern Apartment for Sale in Ypsonas, Limassol (12062)

📍 Ypsonas, Limassol

€280,000 +VAT











# Overview

## Specifications

Bedrooms		Bathrooms		Covered	
 2		 2		 79 m <sup>2</sup>	
Type	Apartment				
Toilets	2				
Status	Under construction				
Year of construction	2026				
Furnished	Unfurnished				
Structure	Concrete				
Facade	Concrete				
Communal charge frequency	Monthly				
Energy efficiency rating	 A				

## Description

Modern Apartment for Sale in Ypsonas, Limassol (12062)

Discover contemporary living with this stylish 2-bedroom, 2-bathroom apartment for sale in the thriving area of Ypsonas. Currently under construction and set for completion in 2026, this modern residence offers 79 m<sup>2</sup> of thoughtfully designed internal space, combining comfort and practicality in a sleek architectural setting.

Situated on the 2nd floor of a 3-story building with elevator access, the apartment features a smart, functional layout with large windows that flood the space with natural light and offer sweeping city views. Perfect for professionals, couples, or small families, it provides a relaxed lifestyle in a peaceful yet well-connected neighborhood.

Ypsonas is known for its quiet charm and rapid development. Residents benefit from easy access to local supermarkets, schools, shops, and restaurants, along with excellent transport links and close proximity to major roadways for stress-free commuting.

### Key Features:

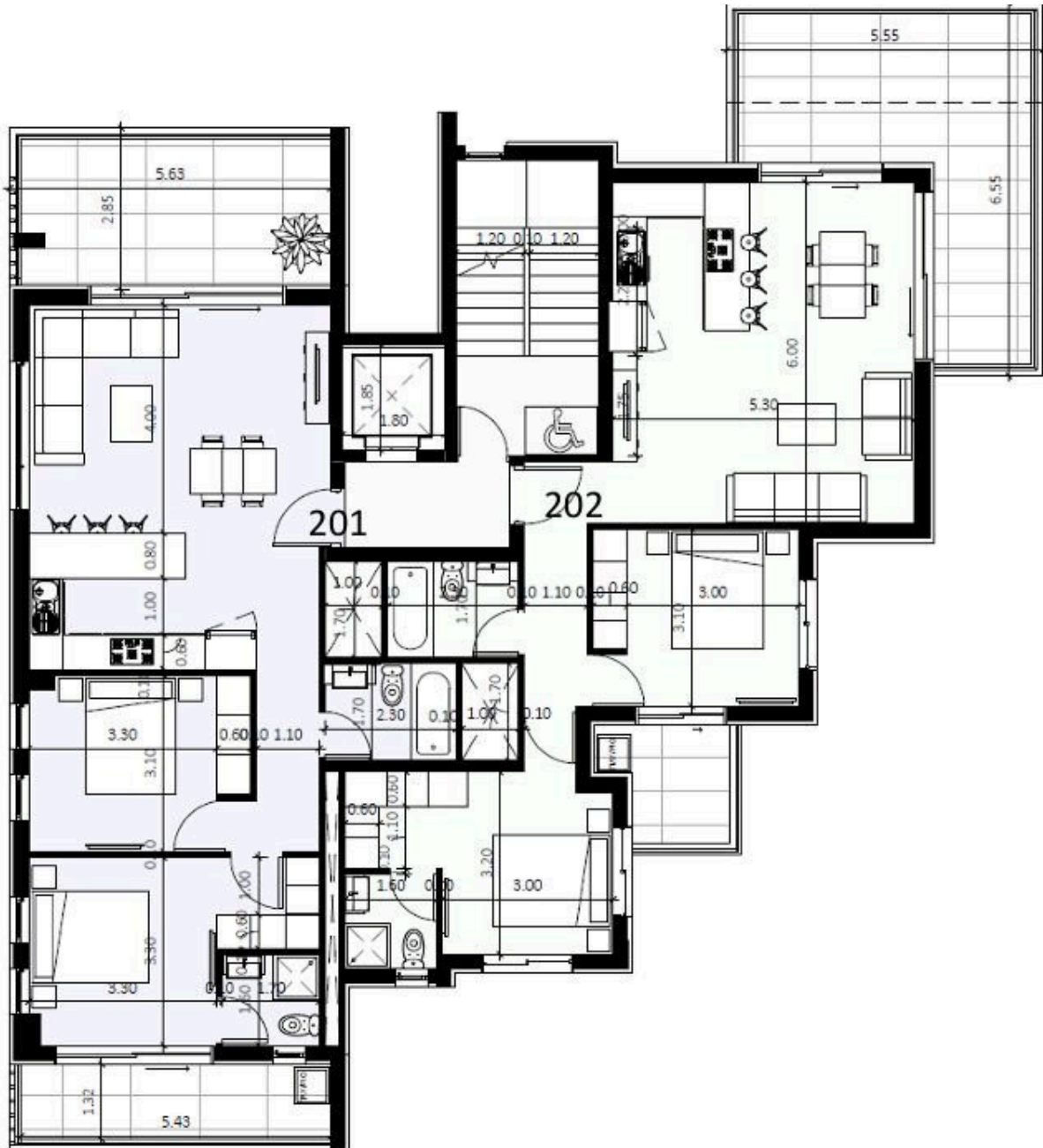
2 Bedrooms & 2 Bathrooms

79 m<sup>2</sup> Internal Area

2nd Floor with Elevator Access



# Floor plans





# Additional information

## Facilities

Aircondition, Provision

Elevator

Heating, Provision

Parking, Covered

## Features

Balcony

Bright

City view

Combined kitchen and dining area

Connected to electric mains

Double glazing

Easy access to main roads

Granite countertops

Investment opportunity

Modern design

Near amenities

Open plan

Quiet area

Thermal insulation

Veranda

## Distances

Amenities



400 m

Sea



7.5 km

Schools



400 m

Resort



7 km

## Contact us



**George Sergiou**

☎ (+357) 94055813

✉ [info@lextrusrealestate.com](mailto:info@lextrusrealestate.com)

