



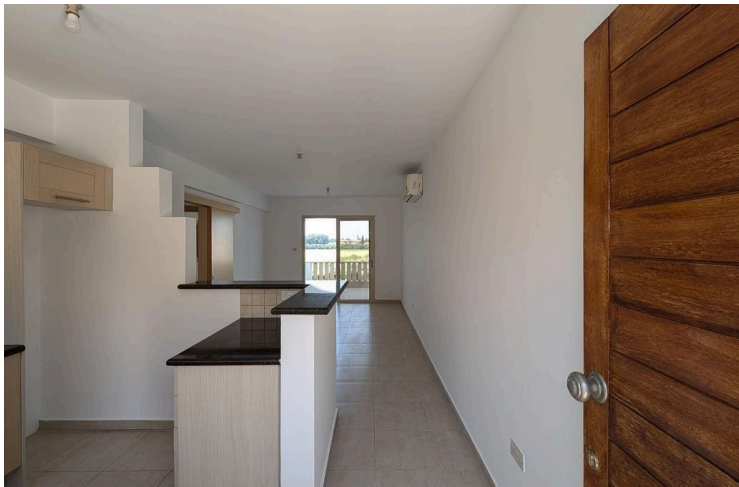
#12045

Two-Bedroom Apartment, Mandria, Paphos (12045)

📍 Mandria Pafou, Paphos

€130,000





Overview

Specifications

Bedrooms



2

Bathrooms



1

Covered

72 m²

Type	Apartment
Toilets	1
Status	Resale
Year of construction	2009

Title deed	Yes
Furnished	Unfurnished
Structure	Concrete
Facade	Concrete

Description

The property is a two-bedroom apartment located in the community of Mandria, in Paphos .

The apartment is situated on the southwestern side of the second floor and has an internal area of 72sq.m., 9 sq.m. covered veranda and 2 sq.m. uncovered veranda.

The apartment consists of an open-plan dining room, sitting area, and kitchen, a bathroom, and two (2) bedrooms.

The property is adjacent to a green area.

Additionally, the property benefits from an exclusive parking space and a storage room located on ground floor.

The property is located approximately 780m southeast of Mandria square, approximately 950m south of Limassol-Paphos highway and approximately 2,5km east of Paphos International Airport.

The property falls within Zone H3, with a building coefficient of 60%, coverage of 35%, and permission for 2 floors (8.3m) of construction.

There is a separate title deed for this property.



Additional information

Facilities

Aircondition, Split system

Heating, Split system

Parking, Covered

Solar water heater

Features

Bright

Easy access to main roads

Granite countertops

Open plan

Quiet area

Rental potential

Veranda

Distances

Airport



4 km

Contact us



Stefania Spyridou

☎ (+357) 99810880

✉ stephaniaSpyridou@gmail.com

