



#12042

# Modern 2 Bedroom 2-sorey House in Kato Polemidia (12042)

📍 Kato Polemidia, Limassol

€370,000 +VAT





# Overview

## Specifications

Bedrooms

 2

Bathrooms

 2

Covered

 79 m<sup>2</sup>

Type	<b>House</b>
Toilets	<b>2</b>
Uncovered veranda	<b>76.5 m<sup>2</sup></b>
Status	<b>Key ready</b>
Year of construction	<b>2025</b>

Furnished	<b>Unfurnished</b>
Structure	<b>Concrete</b>
Facade	<b>Concrete</b>
Energy efficiency rating	 <b>A</b>

## Description

Modern 2 Bedroom 2-sorey House in Kato Polemidia (12042)

Price: €370.000+VAT

Now available for sale is a stylish and functional 2-storey home located in the peaceful yet well-connected area of Kato Polemidia, Limassol. Ready to move in, this residence spans 79 m<sup>2</sup> of internal space, featuring 2 spacious bedrooms and 2 contemporary bathrooms—ideal for couples, small families, or professionals seeking modern living in a serene setting. The house welcomes you with generous spaces and a delightful sense of home comfort. The spacious open-plan kitchen, living room, and dining area create a seamless flow of living space, perfect for both relaxation and entertaining. Step outside to discover your private garden, a serene sanctuary where you can unwind, bask in nature's beauty, and create cherished memories with loved ones.

The property ensures privacy, while offering everyday amenities. A shopping centre, local school, ship management offices, and other major businesses are just a stone's throw away, ensuring that your daily needs are easily met. The captivating Limassol Marina and the bustling main commercial port, as well as the city's popular mall and the renowned casino resort – City of Dreams Mediterranean, are all within a few minutes' drive.

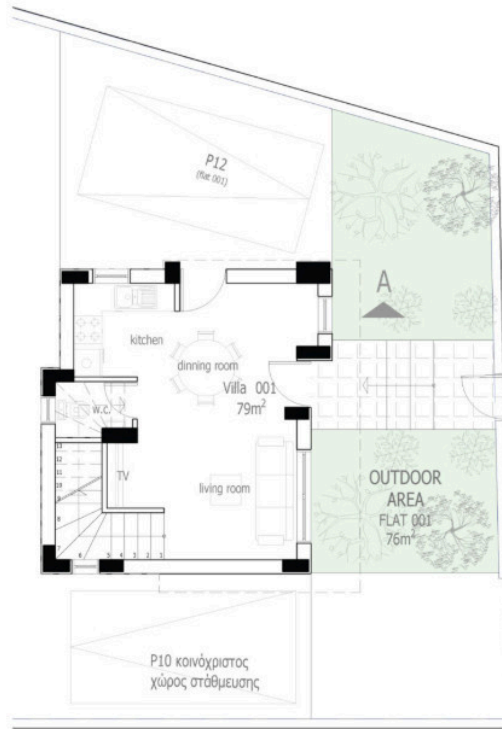
Kato Polemidia is loved for its family-friendly atmosphere, local amenities, and scenic views, offering a perfect blend of suburban calm and urban proximity. With quick access to major roads and the highway, commuting around Limassol is effortless.

Key Features:

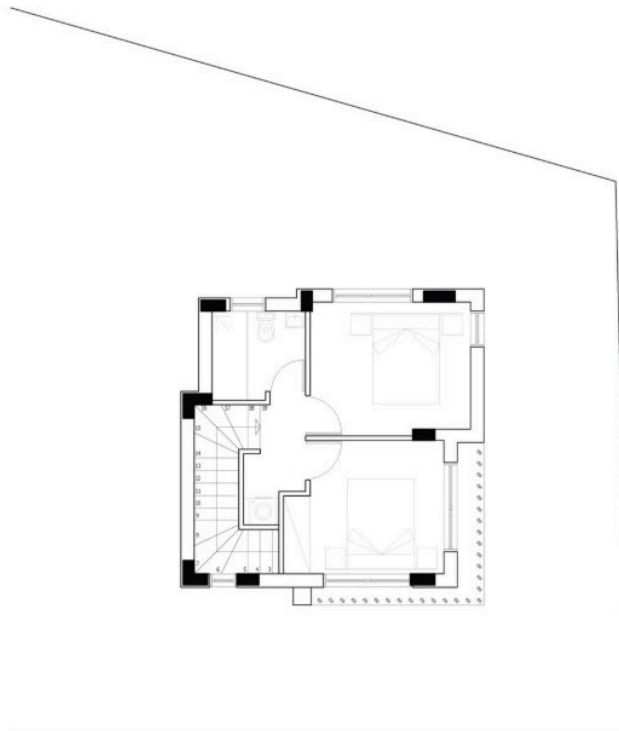


# Floor plans

## Ground Floor Plan for Villa



## First Floor Plan for Villa



# Additional information

## Facilities

Aircondition, Provision

Elevator

Parking, Covered

Pool, Communal

Solar photovoltaic panels  
(provision)

Storage

## Features

Bath

Ceramic tiles

Country view

Courtyard

Double glazing

Easy access to highway

Easy access to main roads

Fitted wardrobes

Garden

Investment opportunity

Luxury specifications

Modern design

Near amenities

Pressurized water system

Quiet area

Rental potential

Veranda

## Distances

Amenities

 1.5 km

Airport

 55.7 km

Sea

 6.4 km


Resort

 5.7 km

## Contact us



**Stavroula Michail**

 (+357) 99810880

 stavroulamichail.lextrus@gmail.com

