



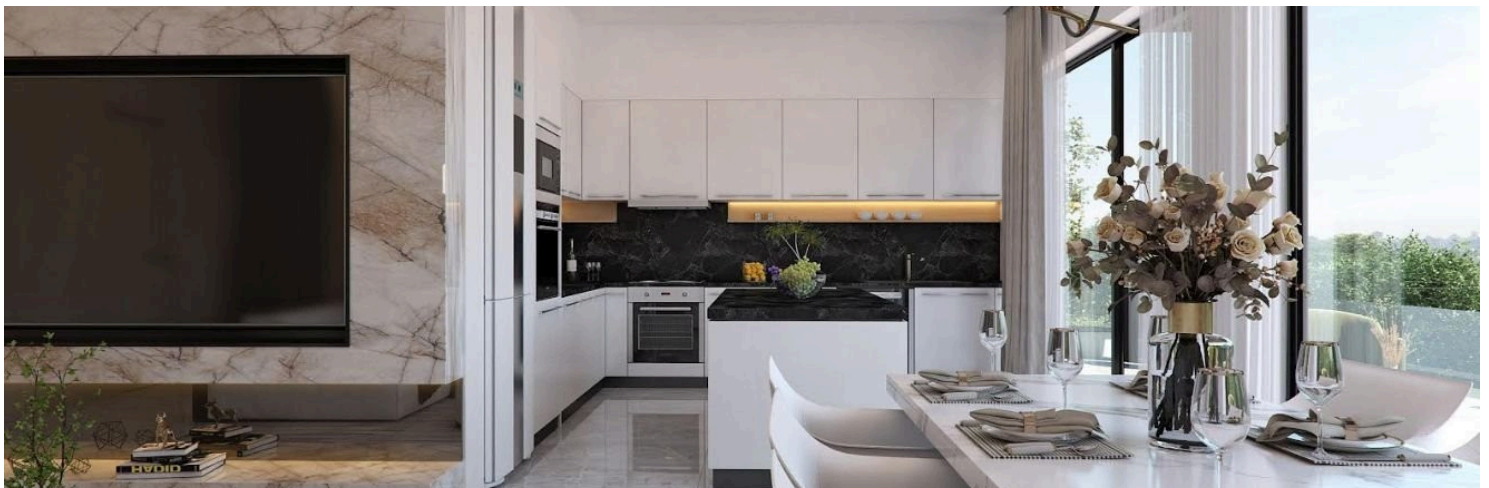
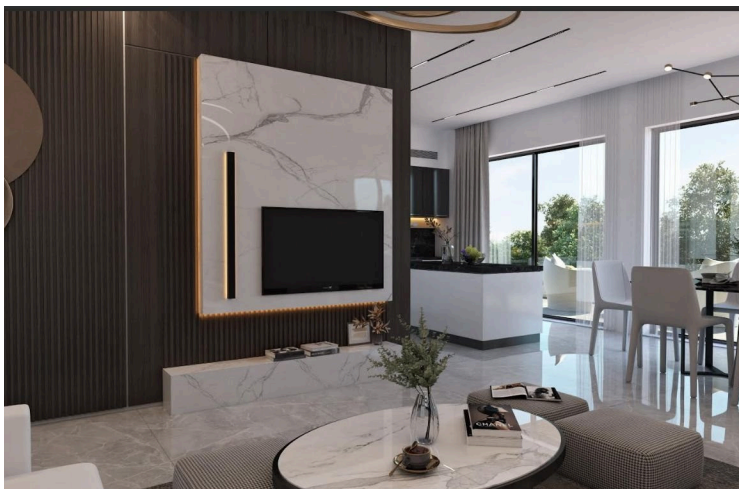
#11930

Modern 2-Bedroom Apartment for Sale, Germasogeia Green Area (11930)

📍 Germasogeia, Limassol





€550,000 +VAT





Overview

Specifications

Bedrooms		Bathrooms		Covered	
 2		 2		 90 m ²	
Type		Apartment			
Status		Under construction			
Year of construction		2025			
Furnished		Unfurnished			
Structure		Concrete			
Facade		Concrete			
Energy efficiency rating		 A			

Description

Modern 2-Bedroom Apartment for Sale, Germasogeia Green Area (11930)

Discover refined living, a contemporary development located in the prestigious Green Area of Germasogeia. Surrounded by lush greenery and enjoying scenic views, this under-construction 2-bedroom apartment is an ideal opportunity for those seeking both style and convenience. Set for completion in 2025, the apartment spans 90 m² and is located on the second floor of a modern three-story building with elevator access.

Designed for energy-efficient living (Energy Rating A), the apartment includes underfloor heating throughout, ensuring year-round comfort. The thoughtful layout features two spacious bedrooms, two modern bathrooms, and a bright open-plan living area ready to be personalized to your taste.

It is a gated complex offering a range of lifestyle amenities including a communal swimming pool, children's playground, private covered parking, individual storage rooms, and electric shutters in all bedrooms. With easy access to the highway, residents are only minutes away from Limassol's vibrant tourist area, renowned for its beaches, 5-star hotels, restaurants, cafes, and nightlife.

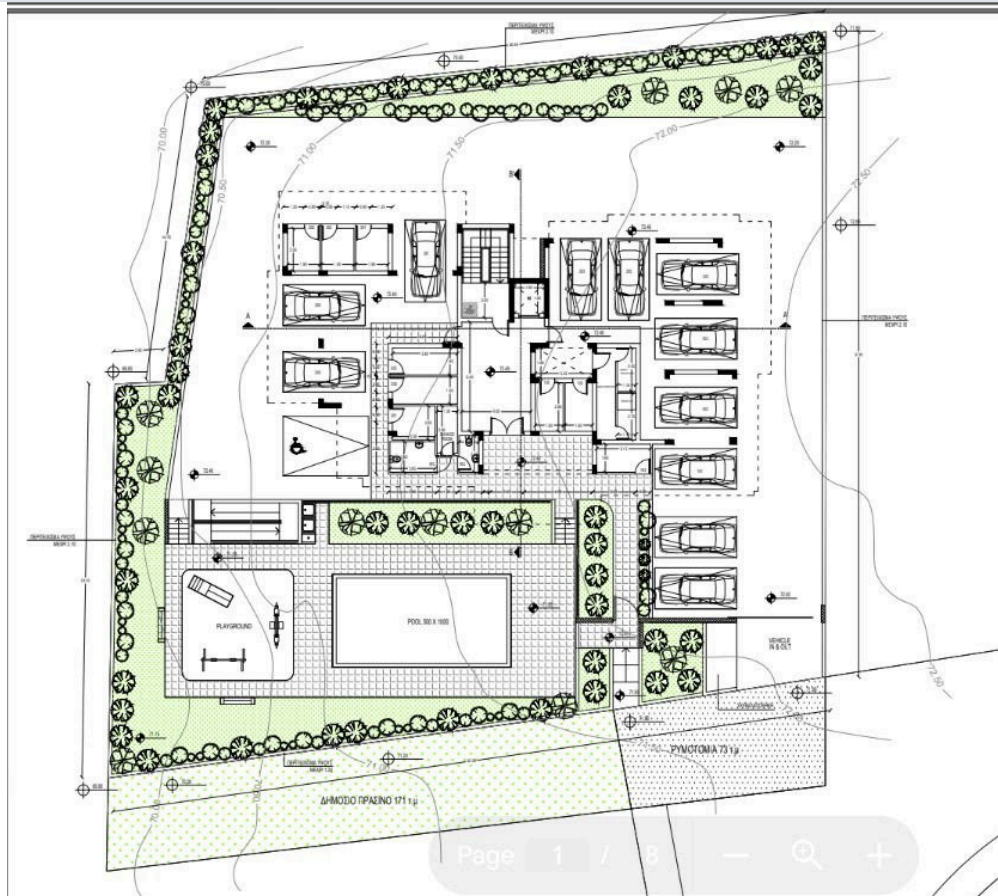
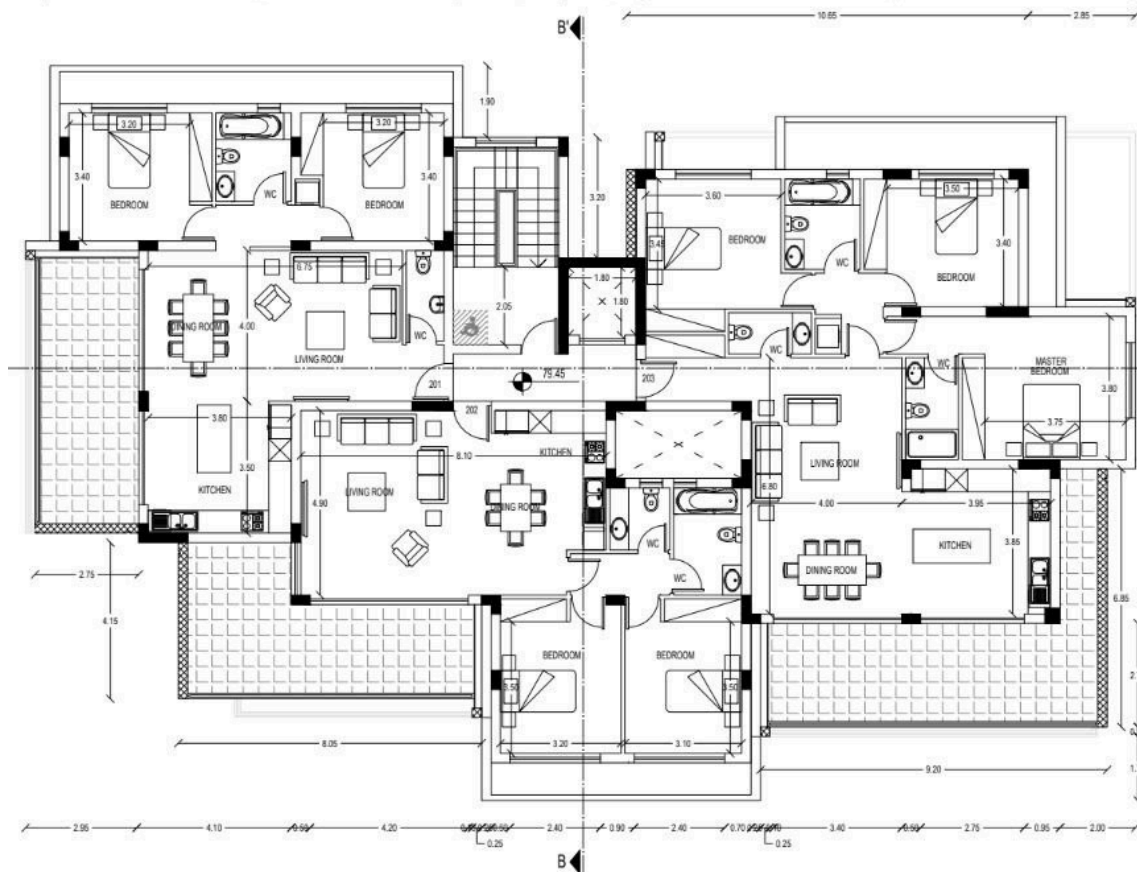
This unfurnished unit offers a rare chance to create your ideal home in one of Limassol's most desirable neighborhoods.

Key Features:

? Prime location in Germasogeia Green Area



Floor plans



Additional information

Facilities

Aircondition, Provision

Gated complex

Pool, Communal

Childrens playground

Heating, Underfloor

Storage

Elevator

Parking, Covered

Features

Easy access to highway

Shutters, electric (provision)

Easy access to main roads

Entrance gate

Distances

Amenities



1.5 km

Sea



3 km

Schools



1.5 km

Resort



1 km

Contact us



George Sergiou

 (+357) 94055813

 info@lextrusrealestate.com

