



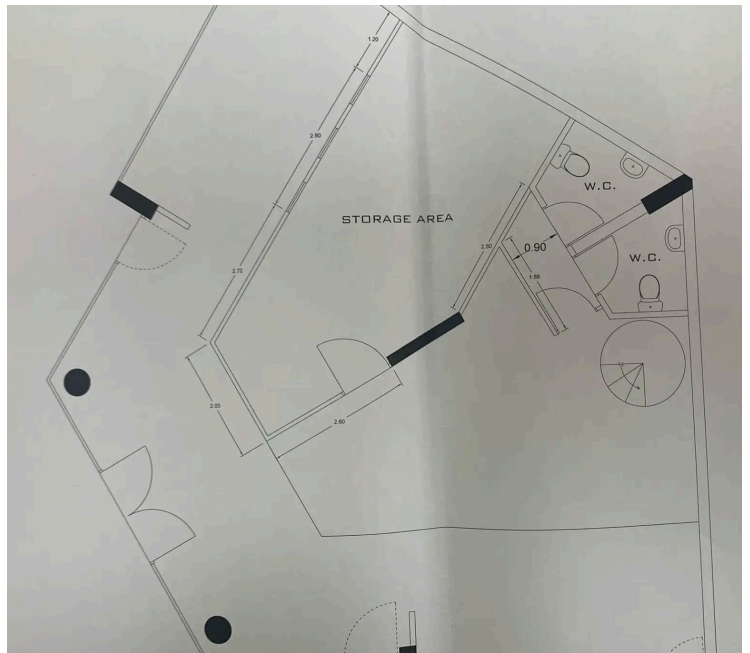
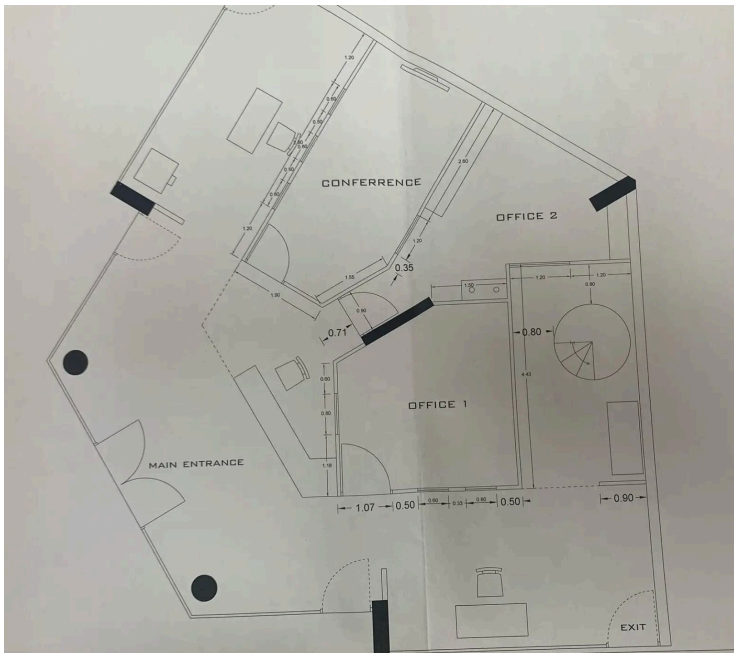
#11925

Spacious Office for Rent | Ground & First Floor | 170 m² | €1,500/Month – Central Limassol (11925)

📍 Skala, Larnaca

€1,500 /month





Overview

Specifications

Covered

 170 m²

Type	Office	Structure	Concrete
Toilets	2	Facade	Concrete
Status	Used	Energy efficiency rating	 C
Furnished	Unfurnished		

Description

Spacious Office for Rent | Ground & First Floor | 170 m² | €1,500/Month – Central Limassol (!1925)

An excellent opportunity to rent a well-maintained two-level office space in a prime Limassol location, ideal for businesses seeking functionality, accessibility, and visibility.

Property Details:

Total Internal Area: 170 m²

Ground Floor: 110 m²

First Floor: 60 m²

Layout: 7 separate office rooms

Flooring: Parquet throughout

Air Conditioning: A/C units in all rooms

Facilities: Separate W.C. for ladies & gents

Security: Equipped with burglar alarm system



Additional information

Facilities

Aircondition, Split system

Heating, Split system

Parking, Uncovered

Storage

Features

Alarm system

Connected to electric mains

Corner

Easy access to main roads

Internet

Main road

Near amenities

Near bus route

Near public transport

Parquet flooring

Reception

Distances

Amenities

 100 m

Airport

 5 km

Sea

 300 m

Public transport

 100 m

Schools

 100 m

Resort

 500 m

Contact us



Giorgos Tsiampas

 (+357) 99982112

 infolextrusrealestate@gmail.com

