



#11912

# Modern 3-Bedroom Off-Plan Home for Sale – Panthea (11912)

📍 Agios Antonios, Limassol





**€440,000** +VAT





# Overview

## Specifications

Bedrooms		Bathrooms		Covered	
 3		 2		 156 m <sup>2</sup>	
Type	Detached House			Year of construction	2026
Toilets	2			Furnished	Unfurnished
Plot	258 m <sup>2</sup>			Structure	Concrete
Basement	5 m <sup>2</sup>			Facade	Concrete
Status	Off plan			Energy efficiency rating	 A

## Description

Modern 3-Bedroom Off-Plan Home for Sale – Panthea (11912)

Introducing a beautifully designed off-plan detached house in the prestigious area of Panthea. Set for completion in 2026, this modern home offers a spacious 156 m<sup>2</sup> of internal living space, thoughtfully laid out to suit families or individuals seeking comfort, style, and efficiency.

The property includes 3 large bedrooms and 2 elegant bathrooms, offering a well-balanced mix of privacy and open living. A versatile basement adds valuable space—ideal for storage, a gym, or a personalized recreation room.

Built to Energy Efficiency A standards, the home integrates smart energy solutions to reduce costs and support sustainable living. From the sleek exterior to the functional, modern interiors, every detail is crafted for a high-quality lifestyle.

Conveniently located near the highway, the home ensures fast access to central Limassol, schools, and all everyday amenities. Whether you're investing or planning your forever home, this is a unique opportunity in one of Limassol's most sought-after areas.

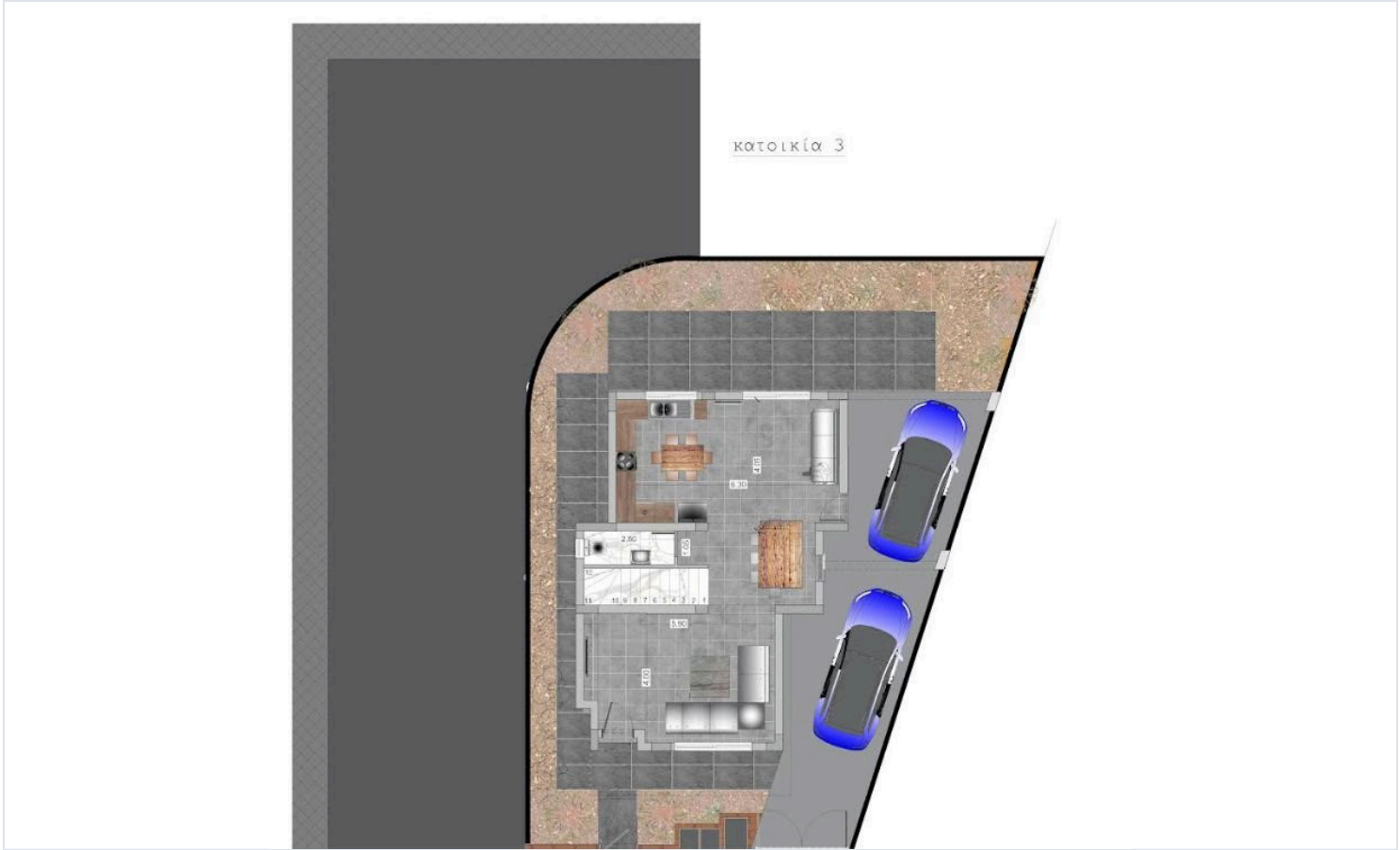
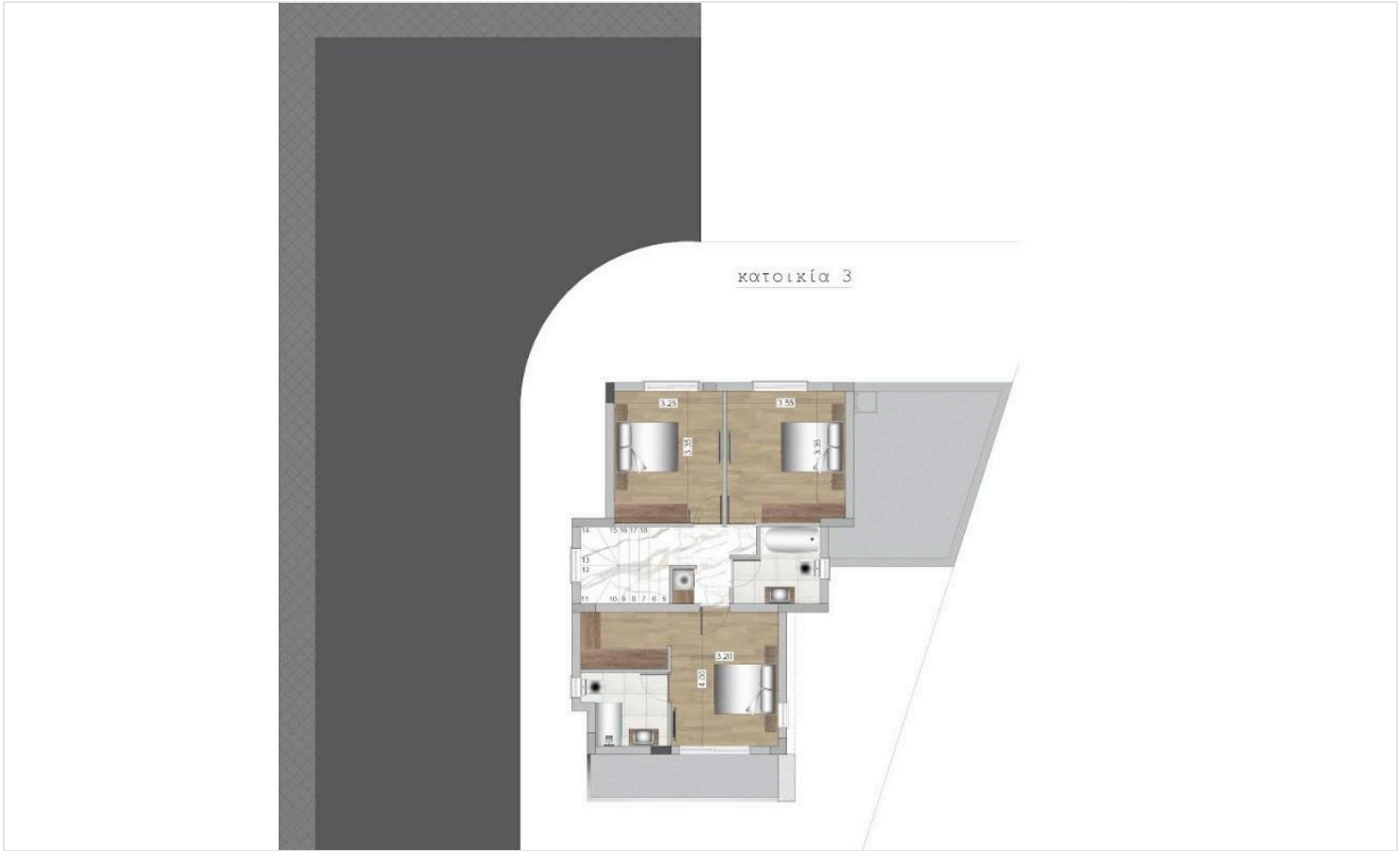
Key Features:

? 156 m<sup>2</sup> internal space

?? 3 spacious bedrooms



# Floor plans



# Additional information

## Facilities

Aircondition, Provision

Parking, Covered

Storage

## Features

Balcony

Balcony, front

Bath

Double glazing

Easy access to highway

Easy access to main roads

Pressurized water system

Quiet area

## Distances

Amenities



1 km

Sea



2 km

Schools



4 km

Resort




1 km

## Contact us



**George Sergiou**

 (+357) 94055813

 [info@lextrusrealestate.com](mailto:info@lextrusrealestate.com)

