

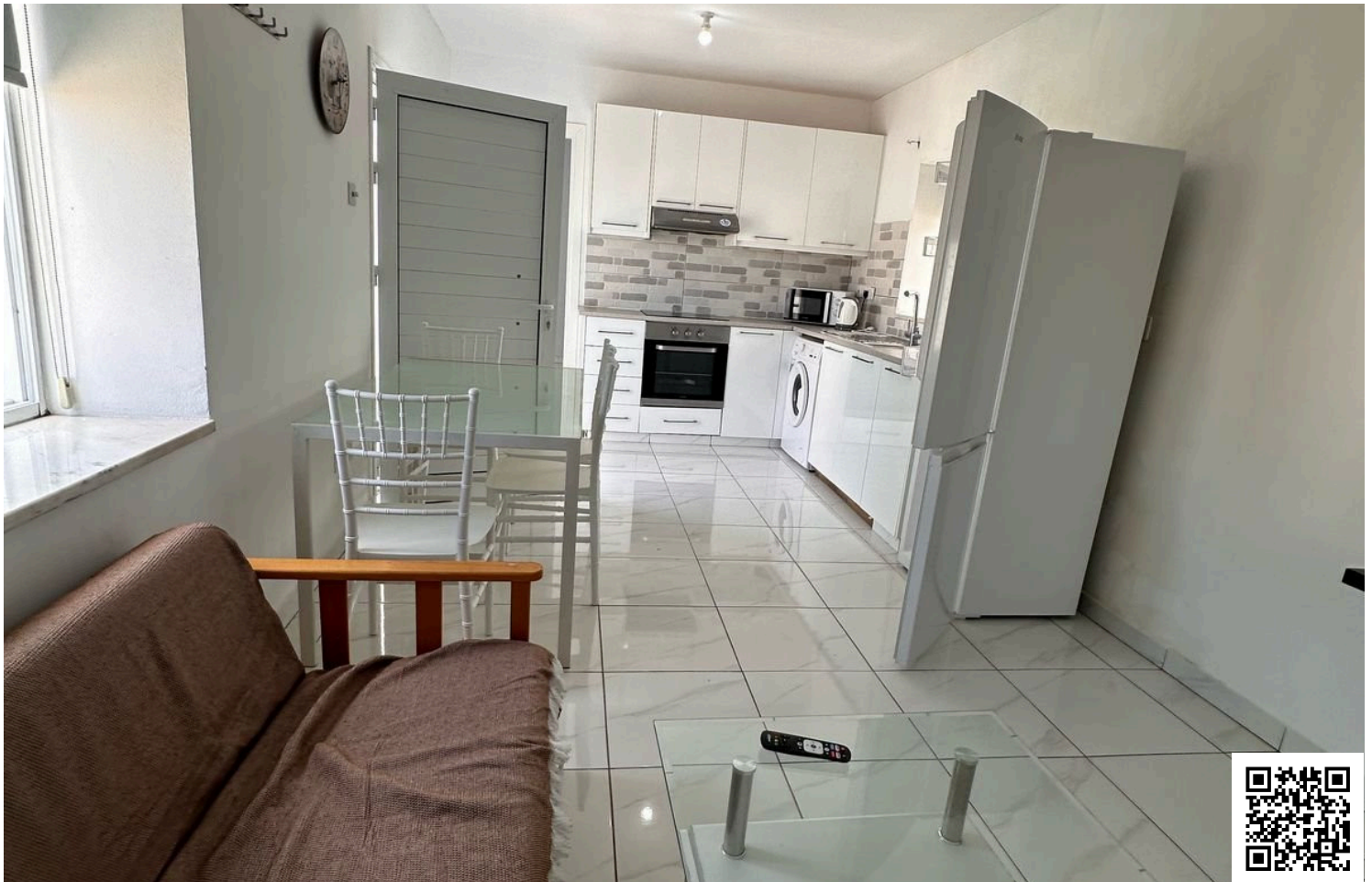


#11838

Charming Two-Storey House with Dual 2-Bedroom Flats in Livadia

📍 Livadia, Larnaca





€300,000





Overview

Specifications

Bedrooms		Bathrooms		Covered	
 4		 4		 80 m ²	
Type	House	Title deed	Yes		
Toilets	4	Furnished	Unfurnished		
Plot	503 m ²	Structure	Concrete		
Status	Resale	Facade	Concrete		
Year of construction	1940	Energy efficiency rating	 D		

Description

Spacious Plot | Investment Potential | €300,000

Nestled in a peaceful residential area of Livadia, Larnaca, this two-storey property offers exceptional value and flexibility. Built in 1940 and maintained with care, it sits on a generous 503 sq.m. plot and features two independent 2-bedroom flats—one on each floor—ideal for dual living, rental income, or a smart investment opportunity.

Key Features:

Total of 4 Bedrooms & 4 Bathrooms (2 beds / 2 baths per floor)

503 m² Plot with potential for landscaping or future development

Bright and Airy interiors with open-plan living

Split-System Air Conditioning & Heating for year-round comfort

Fully Equipped Kitchens with combined kitchen & dining areas

Ceramic Tiles throughout for easy maintenance

Double Glazing and Roller Blinds for privacy and insulation



Additional information

Facilities

Aircondition, Split system

Heating, Split system

Storage

Features

Bright

Ceramic tiles

Combined kitchen and dining area

Connected to electric mains

Double glazing

Easy access to main roads

Investment opportunity

Kitchen appliances

Open plan

Quiet area

Rental potential

Roller blinds

Shower

Distances

Amenities



400 m

Airport



9 km

Sea



3 km

Contact us



Stefania Spyridou

📞 (+357) 99810880

✉️ stephaniaspyridou@gmail.com

