



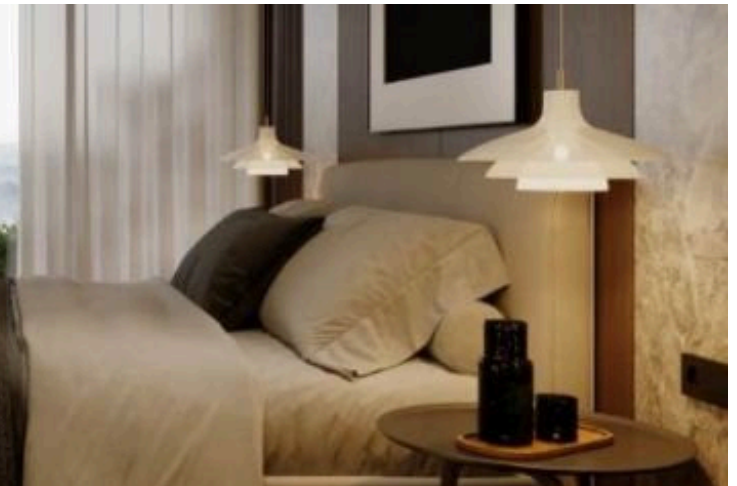
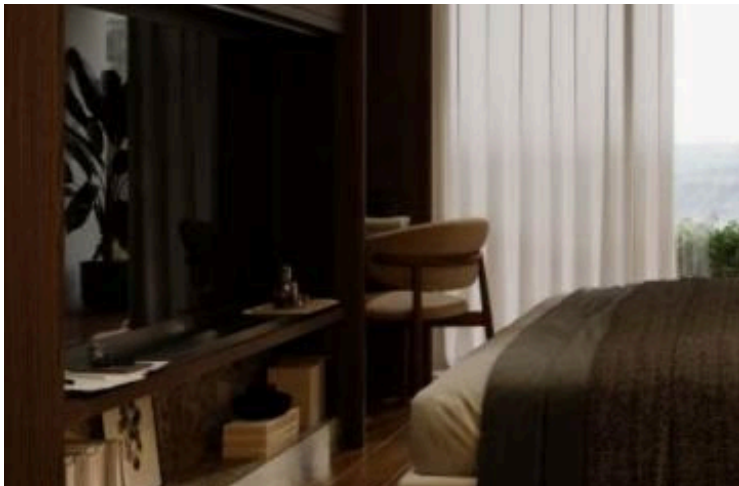
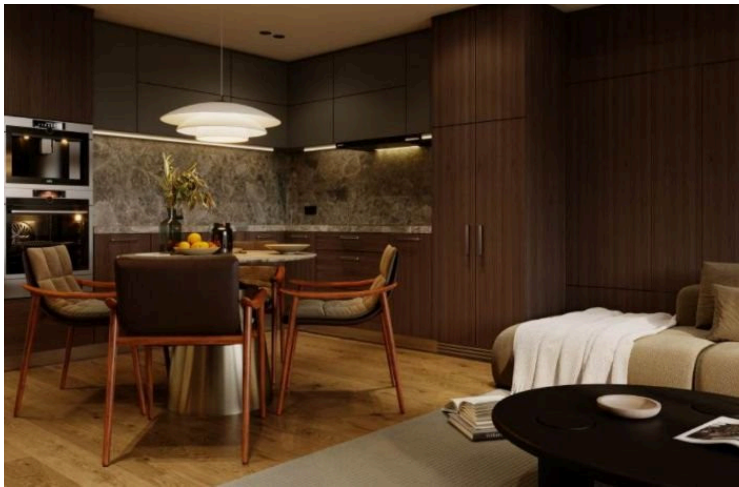
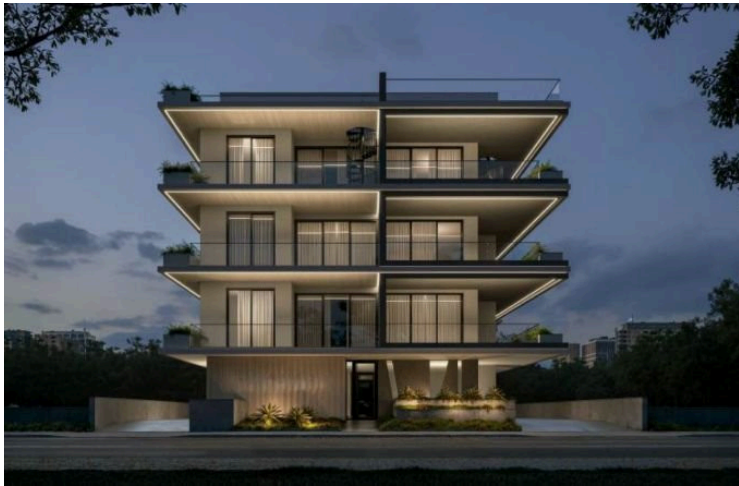
#11774

Modern Apartment with 2 Bedrooms in Aradippou (11774)

📍 Aradippou, Larnaca





€265,000 +VAT





Overview

Specifications

| | | | | | |
|---|--|---|--|--|--|
| Bedrooms | | Bathrooms | | Covered | |
|  2 | |  2 | |  77.85 m ² | |
| Type | | Apartment | | | |
| Status | | Off plan | | | |
| Year of construction | | 2026 | | | |
| Furnished | | Unfurnished | | | |
| Structure | | Concrete | | | |
| Facade | | Concrete | | | |
| Energy efficiency rating | |  A | | | |

Description

Modern Apartment with 2 Bedrooms in Aradippou (11774)

For sale is a modern off-plan apartment located in the heart of Aradippou. This two-bedroom, two-bathroom home offers an internal space of 75.05 m2, situated on the second floor of a three-story building with an elevator for easy access. Completed in 2026, the apartment promises to be energy efficient with an impressive Energy Efficiency rating of A.

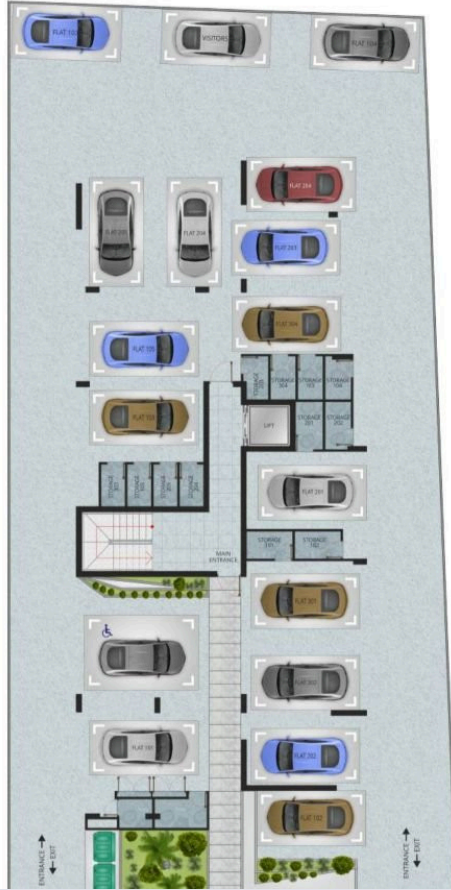
Aradippou is a vibrant area known for its friendly community and convenient amenities. Residents enjoy easy access to local shops, restaurants, and recreational facilities. The apartment is also conveniently located near the highway, making it perfect for those commuting or exploring nearby attractions.

The apartment is offered unfurnished, allowing new owners to personalize the space to their taste. The gated complex adds an extra layer of security and peace of mind for residents.

Take advantage of this opportunity to own a stylish and modern apartment in Aradippou. For more information, please contact Lextrus Real Estate. We are here to help you find your dream home!



Floor plans



Additional information

Facilities

Aircondition, Split system

Elevator

Gated complex

Parking, Covered

Solar photovoltaic panels

Storage

Features

Bath

Double glazing

Easy access to highway

Easy access to main roads

Electric car charger (provision)

Garden

Roof garden

Thermal insulation

Distances

Amenities



1 km

Airport



12.8 km

Sea



3.2 km

Schools




190 m

Contact us



George Sergiou

 (+357) 94055813

 info@lextrusrealestate.com

