



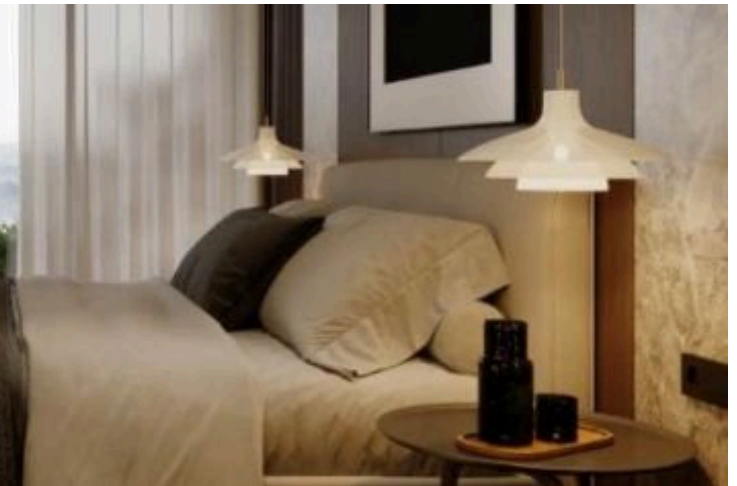
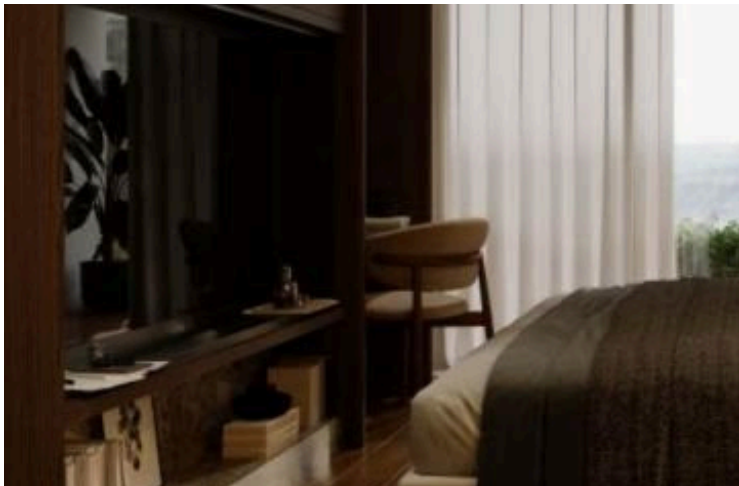
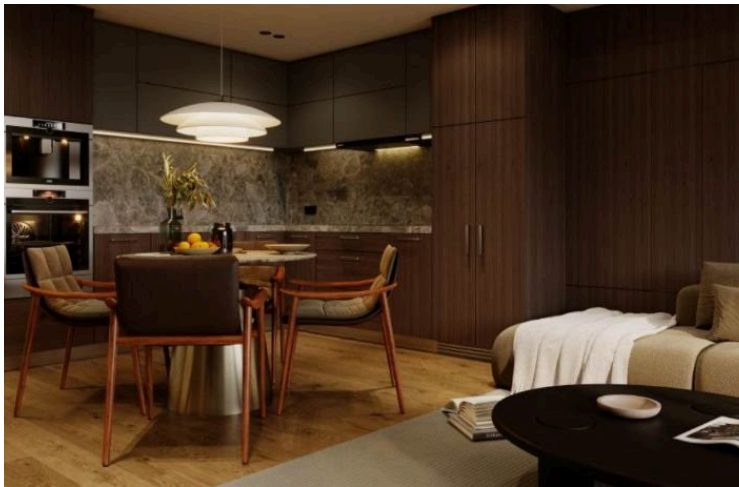
#11766

# Modern Apartment for Sale in Aradippou (11766)

📍 Aradippou, Larnaca





€140,000 +VAT





# Overview

## Specifications

Bedrooms		Bathrooms		Covered	
 1		 1		 53.65 m <sup>2</sup>	
Type		Apartment			
Status		Off plan			
Year of construction		2026			
Furnished		Unfurnished			
		Structure		Concrete	
		Facade		Concrete	
		Energy efficiency rating		 A	

## Description

Modern Apartment for Sale in Aradippou (11766)

Lextrus Real Estate presents a stylish, off-plan one-bedroom apartment for sale in the growing area of Aradippou. Located on the first floor of a modern three-story building with an elevator, this apartment offers 53.65 m<sup>2</sup> of internal living space, designed for comfort and efficiency. The building is scheduled for completion in 2026 and will feature an Energy Efficiency Rating of 'A', helping you save on future utility costs.

Inside, you'll find a bright open-plan layout that easily accommodates a comfortable living room, kitchen, bedroom, and bathroom. The apartment is unfurnished, giving you the freedom to style it exactly how you like.

The property is part of a secure, gated complex, offering privacy and peace of mind to residents. Whether you're looking for your first home, a smart investment, or a convenient city pad, this apartment is a fantastic choice.

### Location:

Situated in a quiet yet central part of Aradippou, you'll enjoy easy access to everyday essentials like shops, cafes, restaurants, and beautiful parks. The highway is just minutes away, providing quick connections to nearby cities and beaches. Aradippou is well-known for its welcoming community and relaxed, suburban atmosphere – ideal for both professionals and small families.

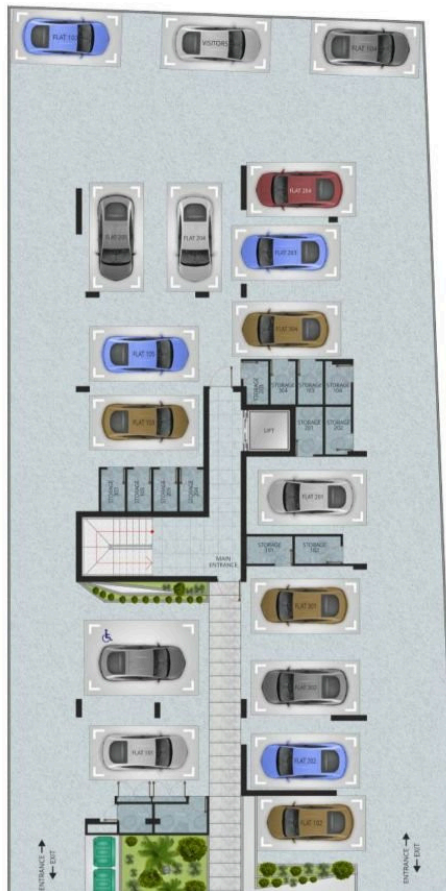
### Key Features:

1 Bedroom, 1 Bathroom





# Floor plans



# Additional information

## Facilities

Aircondition, Split system

Elevator

Gated complex

Parking, Covered

Solar photovoltaic panels

Storage

## Features

Bath

Double glazing

Easy access to highway

Easy access to main roads

Electric car charger (provision)

Garden

Thermal insulation

## Distances

Amenities



1 km

Airport



12.8 km

Sea



3.2 km

Schools




190 m

## Contact us



**George Sergiou**

 (+357) 94055813

 [info@lextrusrealestate.com](mailto:info@lextrusrealestate.com)

