



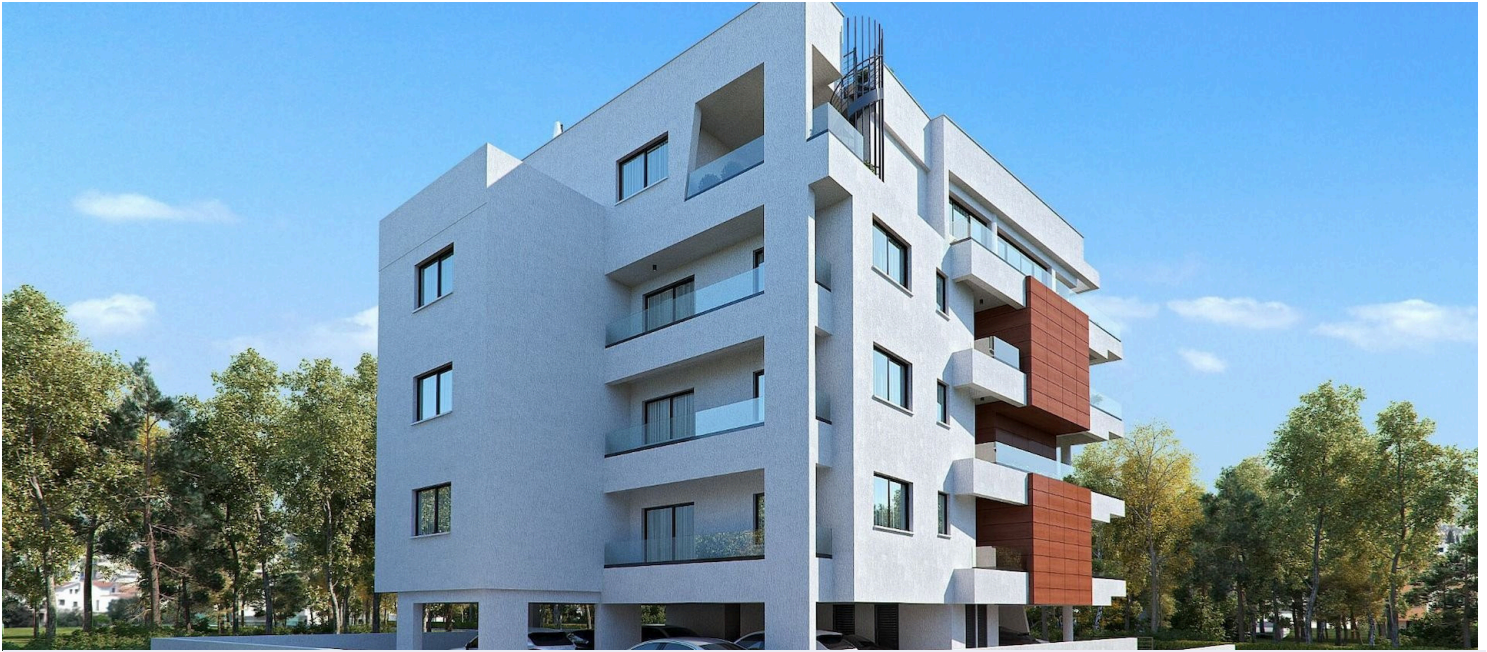
#11746

2 Bedroom Apartment in Mesa Geitonia Limassol (11746)

📍 Mesa Geitonia, Limassol





€325,000 +VAT





Overview

Specifications

Bedrooms		Bathrooms		Covered	
 2		 2		 80 m ²	
Type		Apartment			
Toilets		2			
Status		Off plan			
Year of construction		2027			
Furnished		Unfurnished			
Structure		Concrete			
Facade		Concrete			
Communal charge frequency		Monthly			
Energy efficiency rating		 A			

Description

Unlock the lifestyle you deserve with this stunning 2-bedroom apartment in the heart of Mesa Geitonia, Limassol! Set on the 1st floor of a 4-story contemporary building, this residence is designed for comfort, style, and smart investment.

? Move-in Date: June , 2027

? Price: €325,000 + VAT

? Property Highlights:

Total Covered Area: 80 m² + Large Covered Veranda: 23 m²

2 Bedrooms | 2 Bathrooms | Open Plan Living

Energy Efficiency Rating A – Smart design meets sustainability!

Modern Finishes: Granite countertops, ceramic tiles, aluminium frames, double-glazed windows

Provisions: Air-conditioning, heating, CCTV

Covered Parking (11.5 m²) + Private Storage

Automated Entrance Gate | Elevator | Solar Water Heater



Additional information

Facilities

Aircondition, Provision

Parking, Covered

Elevator

Solar water heater

Heating, Provision

Storage

Features

Balcony

CCTV (provision)

Combined kitchen and dining area

Easy access to main roads

Entrance gate, automated

Modern design

Veranda

Bright

Ceramic tiles

Connected to electric mains

Energy efficient doors/windows

Granite countertops

Open plan

Veranda, large

CCTV

City view

Double glazing

Entrance gate

Investment opportunity

Thermal insulation

Distances

Amenities

 400 m

Airport

 50 km

Sea

 2.4 km

Public transport

 600 m


Schools

 800 m

Contact us



Stefania Spyridou

 (+357) 99810880

 stephaniaSpyridou@gmail.com

